

Form 874-9—Revised May, 1918
U. S. Department of Agriculture
FOREST SERVICE

813

Chippewa NATIONAL FOREST

CORNERS OF THE PUBLIC SURVEY

T. 148 N R. 29 W 5th P. Mer.

Quarter Corner common to Sections

21, and 22

Corner consists of a wood post (not) in place

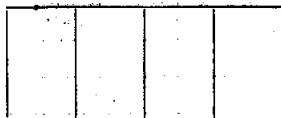
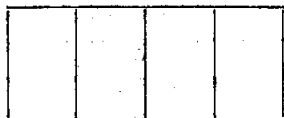
State condition Good

Dimensions above ground 30 inches

Sketch grooves, letters, figures, or notches, on proper face or edge.

CARDINAL POSITION

DIAGONAL POSITION



N W S E

NW SW SE NE

Mound of is located

Pits are located

Sketch markings of Bearing Trees (or Rocks) in proper box and fill blanks below, giving bearings from Corner to Trees and Distances in Links.

County or Orig. B.T.

1/4 S
22

B.T.

Species J. Pine

Diameter 7 1/2

Bearing N. 74° E

Distance 77

Do you believe this to be a genuine Land Office Corner? Yes

If not, why?

G. Oliver

(Signature)

Compass Man

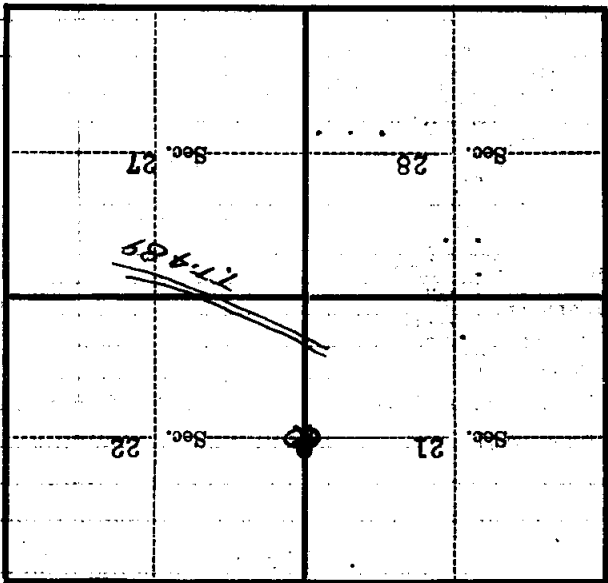
(Title)

12/6/38

(Date)

Corner again.
 H new capped pipe now
 Marks Cor. will stack pipe
 H.T.'s check Iasco Co.
 11-10-68 RHM

Give any further facts which will aid in finding this
 chains distant.
 0.05
 from which this Corner bears S. 21° E.
 side of Tree
 tree 6 inches diameter, on the South
 Metal Location Poster is on a 4. Pine



(Make sketch of topography near Corner)

T. 148 N R. 29 W 5th P. Mer.