

U. S. Department of Agriculture

FOREST SERVICE

J-13

posted

Chippewa

NATIONAL FOREST

CORNERS OF THE PUBLIC SURVEY

T. 148 R. 25 Mer. 5

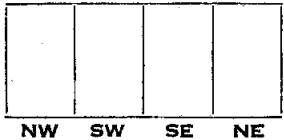
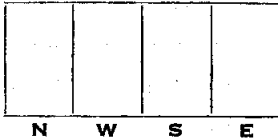
Sec. 1 Corner common to Sections 9, 10, 15, and 16

Corner consists of a _____ (not) in place
State condition _____

Dimensions above ground _____ inches
Sketch grooves, letters, figures, or notches, on proper face or edge.

CARDINAL POSITION

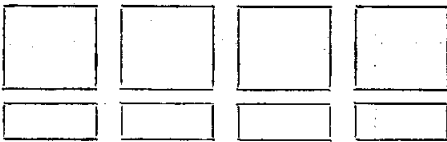
DIAGONAL POSITION



Mound of _____ is located _____

Pits are located _____

Sketch markings of Bearing Trees (or Rocks) in proper box and fill blanks below, giving bearings from Corner to Trees and Distances in Links.



Species _____

Diameter _____

Bearing _____

Distance _____

Do you believe this to be a genuine Land Office Corner? Yes

If not, why? _____

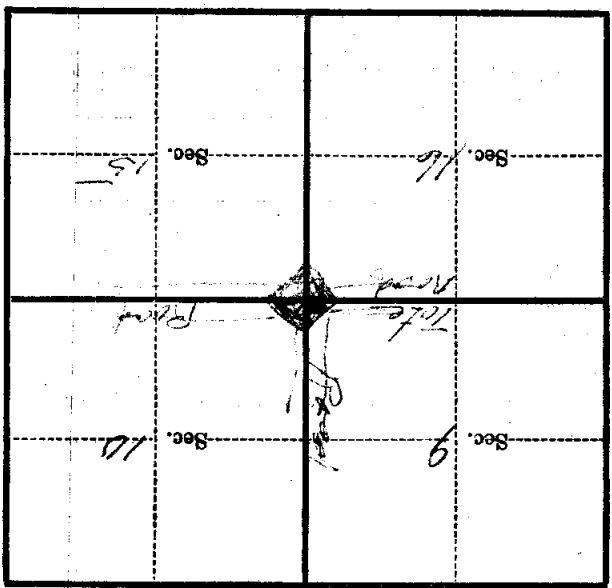
Lloyd W. Johnson
(Signature)

Jan 24 1918
(Date)

Subby
(Title)

Metal Location Poster is on a *Tree* inches diameter, on the side of *Road* from which this Corner bears *36* chains distant. *Not at Road* Give any further facts which will aid in finding this Corner again.

Can be found in corner County Road No. 1



(Make sketch of topography near Corner)

Form 874-9—Revised May, 1918
 U. S. Department of Agriculture
 FOREST SERVICE

J13
P

Chippewa NATIONAL FOREST

CORNERS OF THE PUBLIC SURVEY

T. 148 N. R. 28 W. 5 th Mer.
 Section

Corner common to Sections
 9, 10, 15, and 16

Corner consists of a Cedar post (not) in place
 State condition Decayed, was lying down.

Dimensions above ground _____ inches

Sketch grooves, letters, figures, or notches, on proper face or edge.

CARDINAL POSITION

DIAGONAL POSITION

--	--	--	--

S 9	S, 16	S 15	S 10
--------	----------	---------	---------

N W S E

NW SW SE NE

Mound of _____ is located _____

Pits are located _____

Sketch markings of Bearing Trees (or Rocks) in proper box and fill blanks below, giving bearings from Corner to Trees and Distances in Links.

None	found		

Species _____

Diameter _____

Bearing _____

Distance _____

Do you believe this to be a genuine Land Office Corner? Yes

If not, why? _____

H. Emmert

(Signature)

Chief of party, C.C.C.

(Title)

7/18/35,

(Date)

Form 374-9--Revised May, 1913
 U. S. Department of Agriculture
 FOREST SERVICE

J-13

Chippewa NATIONAL FOREST
 CORNERS OF THE PUBLIC SURVEY

T. *148 N* R. *28 W* *5th* Mer.

section Corner common to Sections
9, 10, 15, and 16

Corner consists of a *cedar post* (not) in place
 State condition *Rotted was laying down*

Dimensions above ground _____ inches

Sketch grooves, letters, figures, or notches, on proper face or edge.

CARDINAL POSITION

DIAGONAL POSITION

N	W	S	E

5	5	5	5
9	16	15	10
NW	SW	SE	NE

Mound of _____ is located _____

Pits are located _____

Sketch markings of Bearing Trees (or Rocks) in proper box and fill blanks below, giving bearings from Corner to Trees and Distances in Links.

Species _____

Diameter _____

Bearing _____

Distance _____

Do you believe this to be a genuine Land Office Corner? *Y*

If not, why? _____

(Signature) _____

7/18/35
 (Date)

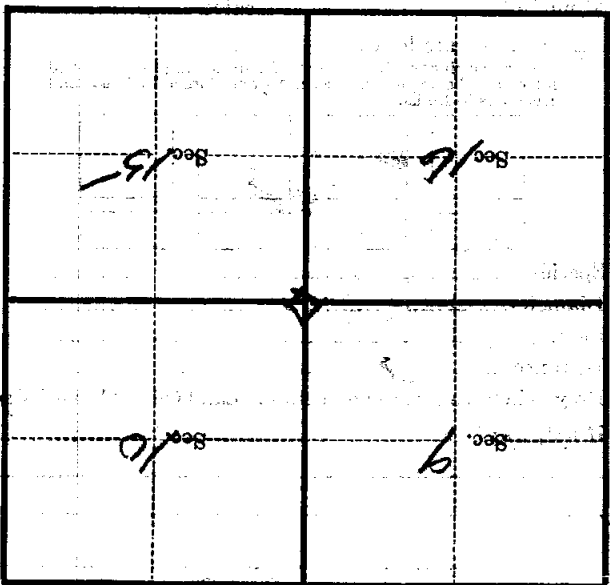
(Title)

43

Faint, illegible text on the top portion of the page, possibly bleed-through from the reverse side.

Corner again.

Give any further facts which will aid in finding this
chains distant.
from which this Corner bears
side of
tree inches diameter, on the
Metal Location Poster is on a



(Make sketch of topography near Corner)

T. 145 N. R. 28 W. 5th Mer.

U. S. Department of Agriculture

FOREST SERVICE

J-13

NATIONAL FOREST

CORNERS OF THE PUBLIC SURVEY

T. 148 R. 28 S Mer.

Section Corner common to Sections

9, 10, 15, and 16

Corner consists of a Cedar Post (not) in place

State condition Rotted; was lying down.

Dimensions above ground inches

Sketch grooves, letters, figures, or notches, on proper face or edge.

CARDINAL POSITION

DIAGONAL POSITION

--	--	--	--

S	S	S	S
9	16	15	10

N W S E

NW SW SE NE

Mound of is located

Pits are located

Sketch markings of Bearing Trees (or Rocks) in proper box and fill blanks below, giving bearings from Corner to Trees and Distances in Links.

Species

Diameter

Bearing

Distance

Do you believe this to be a genuine Land Office Corner?

If not, why?

W Emmert (Signature)

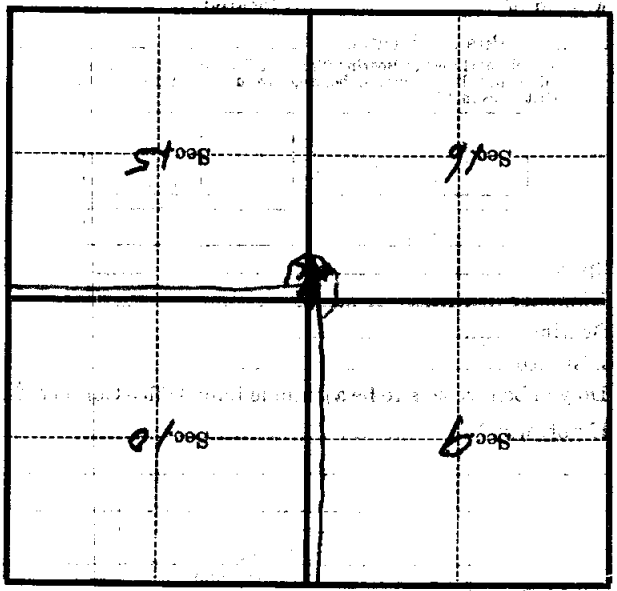
7/18/35 (Date)

(Title)

Corner again.

Give any further facts which will aid in finding this
chains distant.
from which this Corner bears
side of

tree inches diameter, on the
Metal Location Poster is on a *White Marker Post*



(Make sketch of topography near Corner)

Form 874-0—Revised May, 1918
 U. S. Department of Agriculture
 FOREST SERVICE

J-13

Chippewa NATIONAL FOREST
 CORNERS OF THE PUBLIC SURVEY

T. 148 N. R. 28 W. 5th Mer.

SECTION Corner common to Sections
 9, 10, 15, and 16

Corner consists of a cedar post (not) in place
 State condition Rotted was layed down

Dimensions above ground _____ inches

Sketch grooves, letters, figures, or notches, on proper face or edge.

CARDINAL POSITION

DIAGONAL POSITION

N	W	S	E

5	5	5	5
9	16	15	10
NW	SW	SE	NE

Mound of _____ is located _____

Pits are located _____

Sketch markings of Bearing Trees (or Rocks) in proper box and fill blanks below, giving bearings from Corner to Trees and Distances in Links.

Species _____

Diameter _____

Bearing _____

Distance _____

Do you believe this to be a genuine Land Office Corner?

If not, why? _____

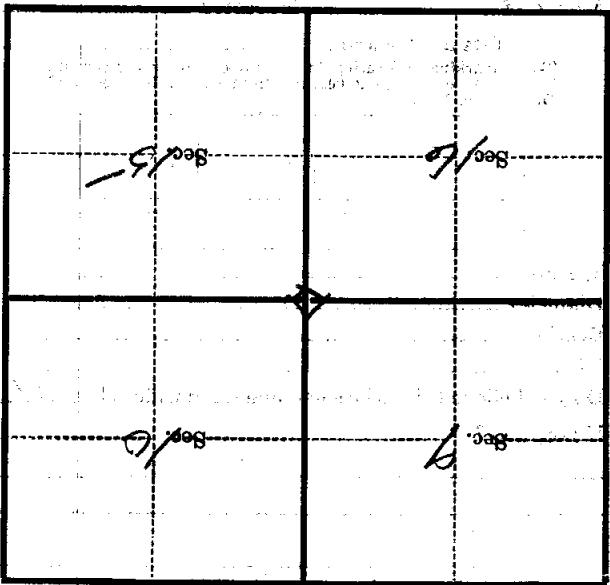
(Signature)

7/18/35
 (Date)

(Title)

Faint, illegible text at the top of the page, possibly bleed-through from the reverse side.

Corner again:
Give any further facts which will aid in finding this
chain distant.
from which this Corner bears
side of
tree inches diameter, on the
Metal Location Poster is on a



(Make sketch of topography near Corner)

T. 148 N. R. 28 W. 5th Mer.