

Form 874-B—Revised May, 1918
 U. S. Department of Agriculture
 FOREST SERVICE

R 13

Chippewa NATIONAL FOREST

CORNERS OF THE PUBLIC SURVEY

T. 148N R. R8N 574-Mer.

Section Corner common to Sections
21, 22, 27, and 28

Corner consists of a Tree (not) in place
 State condition Good - New

Dimensions above ground 30" inches
 Sketch grooves, letters, figures, or notches, on proper face or edge.

CARDINAL POSITION

N	W	S	E

DIAGONAL POSITION

S-	S-	S-	S-
21	28	27	22
NW	SW	SE	NE

Mound of _____ is located _____

Pits are located _____

Sketch markings of Bearing Trees (or Rocks) in proper box and fill blanks below, giving bearings from Corner to Trees and Distances in Links.

<u>BT -</u> <u>S -</u> <u>28</u>			
<u>BT -</u>			

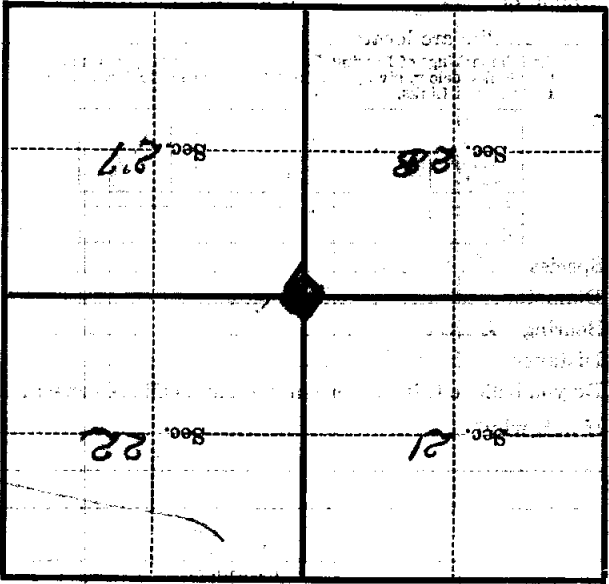
Species Aspen Dead
 Diameter 12"
 Bearing S-30°E
 Distance .92 Links

Do you believe this to be a genuine Land Office Corner? yes
 If not, why? _____

10/26/36 (Date) Balke (Signature)
Chief of Party (Title)
 8-7394 R-13-93

Blank lined area for notes.

Corner again.
Give any further facts which will aid in finding this
chains distant.
from which this Corner bears
side of
tree inches diameter, on the
Metal Location Poster is on a



(Make sketch of topography near Corner)

T. 148 N. R. 28 W. Mer.

U. S. Department of Agriculture

FOREST SERVICE

R-13

Chippewa NATIONAL FOREST

CORNERS OF THE PUBLIC SURVEY

T. 14 E R. 2 E Mer.

Sec.

Corner common to Sections

21, 22, 27, and 28

Corner consists of a Iron (not) in place

State condition NEW

Dimensions above ground 30 inches

Sketch grooves, letters, figures, or notches, on proper face or edge.

CARDINAL POSITION

DIAGONAL POSITION

--	--	--	--

N W S E

S-	S-	S-	S-
21	28	27	22

NW SW SE NE

Mound of _____ is located _____

Pits are located _____

Sketch markings of Bearing Trees (or Rocks) in proper box and fill blanks below, giving bearings from Corner to Trees and Distances in Links.

S- 37			
BT			

Species Aspen Dead

Diameter 12"

Bearing S-30°E

Distance .97

Do you believe this to be a genuine Land Office Corner? Yes

If not, why? _____

W. A. L.

(Signature)

7/26/36

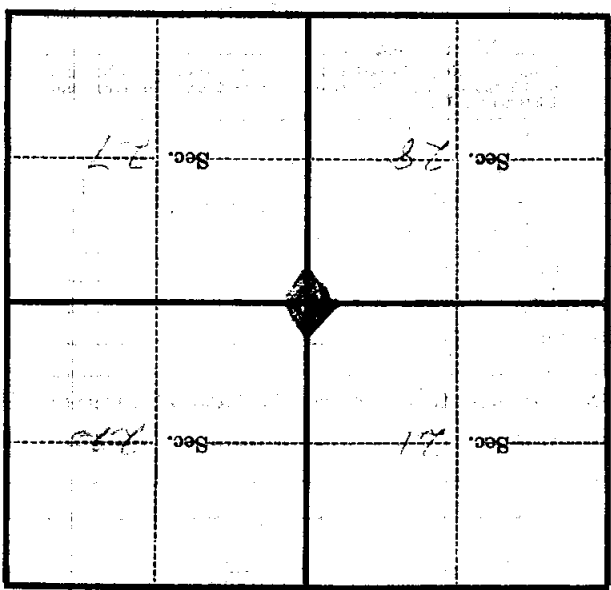
(Date)

(Title)

Series of horizontal dashed lines for writing.

Corner again.

Give any further facts which will aid in finding this
chains distant.
from which this Corner bears
side of
tree inches diameter, on the
Metal Location Poster is on a



(Make sketch of topography near Corner)

T. 148 R. 24 Mer.

U. S. Department of Agriculture
FOREST SERVICE

R-13

Chippewa NATIONAL FOREST

CORNERS OF THE PUBLIC SURVEY

T. 148 R. 28 5th Mer.

Sec. Corner common to Sections
21, 22, 27, and 28.

Corner consists of a T.M. (~~set~~) in place

State condition NEW

Dimensions above ground 30 inches

Sketch grooves, letters, figures, or notches, on proper face or edge.

CARDINAL POSITION

DIAGONAL POSITION

--	--	--	--

S-	S-	S-	S-
21	28	27	22

N W S E

NW SW SE NE

Mound of _____ is located _____

Pits are located _____

Sketch markings of Bearing Trees (or Rocks) in proper box and fill blanks below, giving bearings from Corner to Trees and Distances in Links.

S-
27

--

--

--

BT

--

--

--

Species Aspen Dead

Diameter 12"

Bearing S-30°E

Distance .97

Do you believe this to be a genuine Land Office Corner? Yes.

If not, why? _____

B. Albe.

(Signature)

Leader

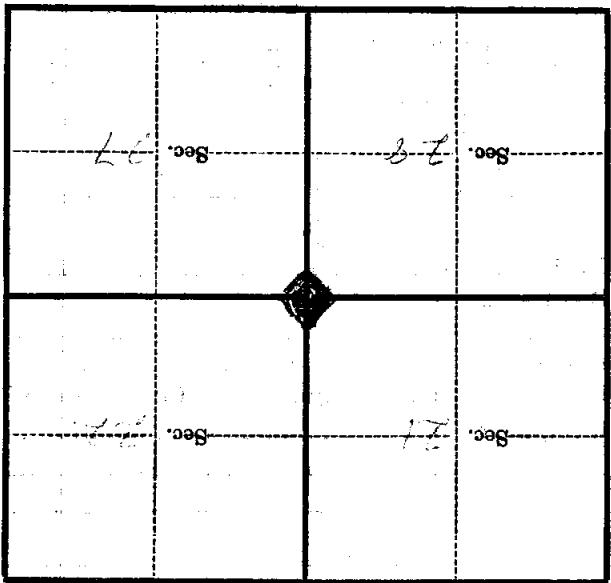
(Title)

10/26/36

(Date)

Corner again.

Give any further facts which will aid in finding this
 chains distant.
 from which this Corner bears
 side of
 tree inches diameter, on the
 Metal Location Poster is on a



(Make sketch of topography near Corner)

T. 22. R. 28. Mer. 5. 15