

U. S. Department of Agriculture
FOREST SERVICE

T13

Chippewa NATIONAL FOREST

CORNERS OF THE PUBLIC SURVEY

T. 148N R. 28W 5th Mer.
Quarter

Corner common to Sections

28, and 27

Corner consists of a post (mt) in place

State condition Good

Dimensions above ground 30 inches

Sketch grooves, letters, figures, or notches, on proper face or edge.

CARDINAL POSITION

DIAGONAL POSITION

| | | | |
|-----|----|-----|----|
| 1/4 | S | 1/4 | S |
| | 28 | | 27 |
| N | W | S | E |

| | | | |
|----|----|----|----|
| | | | |
| NW | SW | SE | NE |

Mound of is located

Pits are located

Sketch markings of Bearing Trees (or Rocks) in proper box and fill blanks below, giving bearings from Corner to Trees and Distances in Links.

| | | | |
|--------|--|--|--|
| T-148N | | | |
| R-28W | | | |
| S-27 | | | |
| 1/4 | | | |
| B.T. | | | |

Species Aspen

Diameter 15"

Bearing S 85° E

Distance

Do you believe this to be a genuine Land Office Corner? Yes

If not, why? I doubt it - since it is a deep, angled pit in place - etc.

Ray Nelson

(Signature)

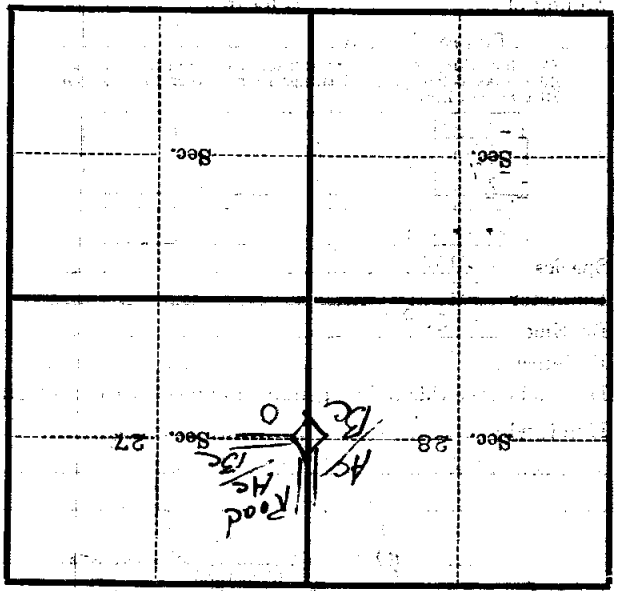
Chief of Party.

8/21/35

(Date)

(Title)

Location poster on 12" balsam 0.23
 chains from which this corner bears
 W 80° W .
 Corner again.
 Give any further facts which will aid in finding this
 0.23 chains distant.
 from which this Corner bears East
 side of Section 27
 inches diameter, on the West
 Metal Location Poster is on a Regular post



(Make sketch of topography near Corner)