

U. S. Department of Agriculture

FOREST SERVICE

N 11

Chippewa

NATIONAL FOREST

CORNERS OF THE PUBLIC SURVEY

T. 148N R. 28W 5th Mer.

1/4 Sec - Corner common to Sections 16, and 21

Corner consists of a Elm - (not) in place

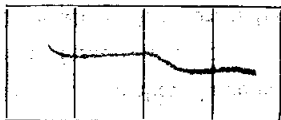
State condition Good -

Dimensions above ground 40" inches

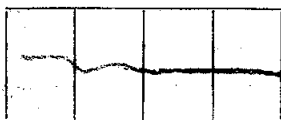
Sketch grooves, letters, figures, or notches, on proper face or edge.

CARDINAL POSITION

DIAGONAL POSITION



N W S E



NW SW SE NE

Mound of is located

Pits are located

Sketch markings of Bearing Trees (or Rocks) in proper box and fill blanks below, giving bearings from Corner to Trees and Distances in Links.

5-21

BT-

Species Elm

Diameter 8"

Bearing 5-58 1/2

Distance .94 1/2

Do you believe this to be a genuine Land Office Corner? No

If not, why? Elm - BT - is not orig. G.L.O. Has been Re-established by County Surveyor

Boike -

(Signature)

Chief of Party

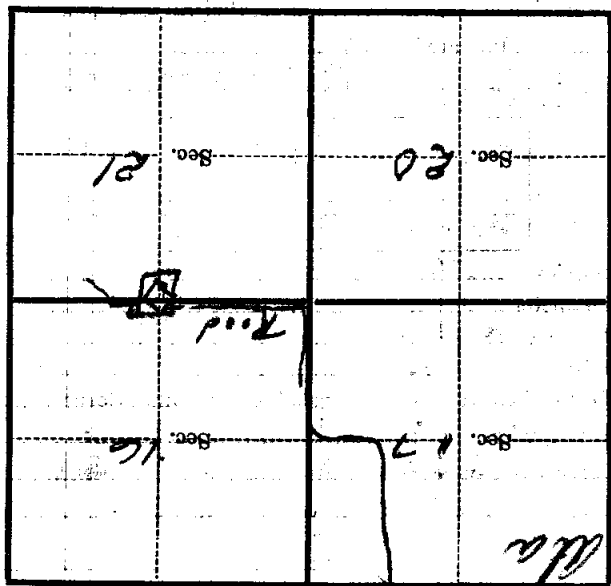
(Title)

10/25/24

(Date)

Corner again.
Corner is located in center
of Road - with a corner post -
set in 1/4 line south of true
corner position - (M-A-C-T-Y-P-E)

Metal Location Poster is on a
tree inches diameter, on the
side of
from which this Corner bears
chains distant.
Give any further facts which will aid in finding this



(Make sketch of topography near Corner)

U. S. Department of Agriculture

FOREST SERVICE

N-11

Chippewa NATIONAL FOREST

CORNERS OF THE PUBLIC SURVEY

T. 148 R. 28 9th Mer.

1/4 Corner common to Sections

16, and 21
Corner consists of a E L M (not) in place

State condition Good

Dimensions above ground 40" inches

Sketch grooves, letters, figures, or notches, on proper face or edge.

CARDINAL POSITION

DIAGONAL POSITION

--	--	--	--

N W S E

--	--	--	--

NW SW SE NE

Mound of _____ is located _____

Pits are located _____

Sketch markings of Bearing Trees (or Rocks) in proper box and fill blanks below, giving bearings from Corner to Trees and Distances in Links.

S- 21

--

--

--

B.T.

--

--

--

Species E L M

Diameter 8"

Bearing S. 58° E

Distance .94

Do you believe this to be a genuine Land Office Corner? NO

If not, why?

By County Surveyor

Balke

(Signature)

Leader

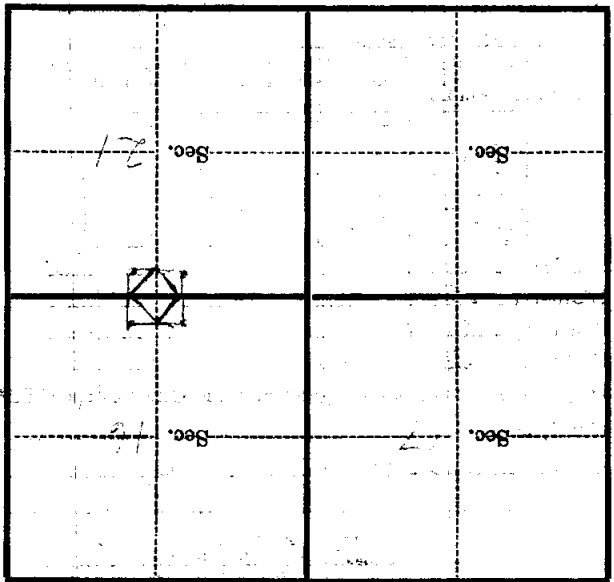
(Title)

10/25/36

(Date)

Corner again.
CORNERS IN CORNER OF
Road. East on
Line S. OF Twp. Corner

Metal Location Poster is on a
tree inches diameter, on the
side of
from which this Corner bears
chains distant.
Give any further facts which will aid in finding this



(Make sketch of topography near Corner)

T. 148 R. 24 Mer.

U. S. Department of Agriculture
FOREST SERVICE

N-11

Chippewa NATIONAL FOREST

CORNERS OF THE PUBLIC SURVEY

T. 148 R. 78 Mer. 5th

1/4 Corner common to Sections

16, and 21
Corner consists of a ELM (not) in place

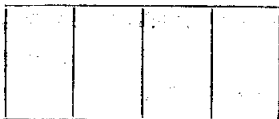
State condition Good

Dimensions above ground 40" inches

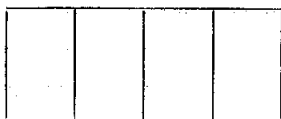
Sketch grooves, letters, figures, or notches, on proper face or edge.

CARDINAL POSITION

DIAGONAL POSITION



N W S E



NW SW SE NE

Mound of _____ is located _____

Pits are located _____

Sketch markings of Bearing Trees (or Rocks) in proper box and fill blanks below, giving bearings from Corner to Trees and Distances in Links.



Species ELM

Diameter 8"

Bearing S. 45° E

Distance .94

Do you believe this to be a genuine Land Office Corner? No

If not, why? _____

By D. T. Surveyor

(Signature) D. T.

(Title) Surveyor

(Date) 10/25/36

65

Corner in center of
Road cor. Post on 1/4
line S. of T&E corner

Corner again.

Give any further facts which will aid in finding this

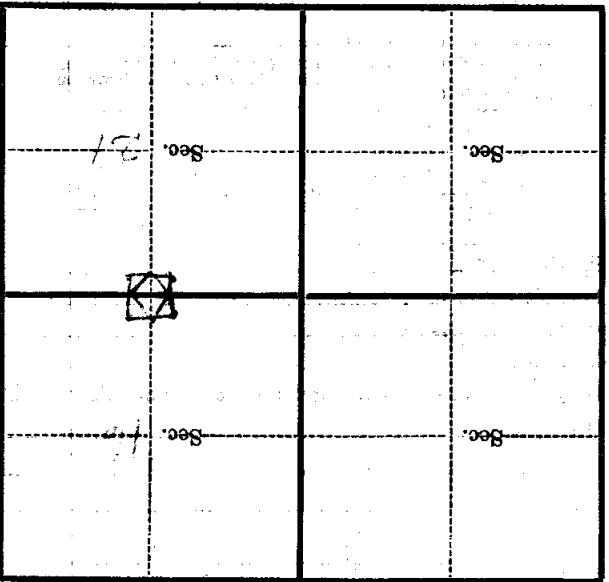
chains distant.

from which this Corner bears

side of

tree inches diameter, on the

Metal Location Poster is on a



(Make sketch of topography near Corner)

T. 102 R. 22 Mer.