

Form 874-B—Revised May, 1918
U. S. Department of Agriculture
FOREST SERVICE

E5
P

Chippewa NATIONAL FOREST

CORNERS OF THE PUBLIC SURVEY

T. 148N R. 28W 5th Mer.

Section Corner common to Sections
6, 5, 7, and 8

Corner consists of a Intersection (not) in place
State condition of road.

Dimensions above ground inches
Sketch grooves, letters, figures, or notches, on proper face or edge.

CARDINAL POSITION

N	W	S	E

DIAGONAL POSITION

NW	SW	SE	NE

Mound of is located

Pits are located

Sketch markings of Bearing Trees (or Rocks) in proper box and fill blanks below, giving bearings from Corner to Trees and Distances in Links.

S-6			
P. T.			

Species Cedar
Diameter 10"
Bearing 152°
Distance 1.17 ch.

Do you believe this to be a genuine Land Office Corner? Yes
If not, why?

[Handwritten Signature]

7/5/35

(Date)

Chief of party.

(Title)

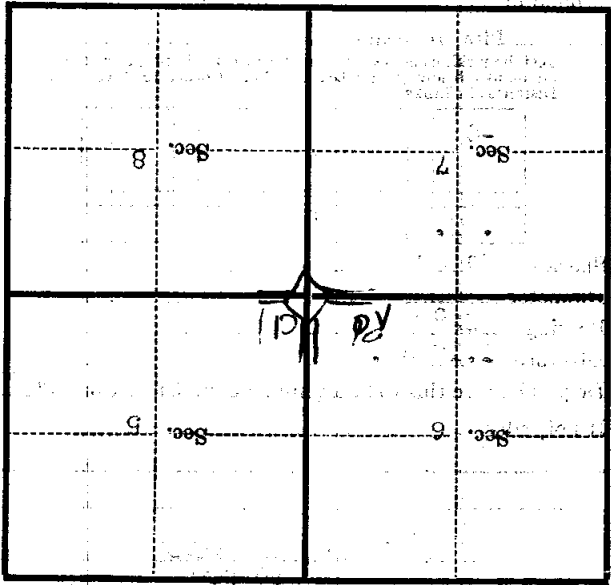
Corner again.
Corner in intersection of road

Give any further facts which will aid in finding this
1.17 chains distant.

from which this Corner bears
side of

tree 10 inches diameter, on the

Metal Location Poster is on a
Corner (B.P.C.)



(Make sketch of topography near Corner)

E 5

U. S. Department of Agriculture

FOREST SERVICE

posted

Chippewa

NATIONAL FOREST

CORNERS OF THE PUBLIC SURVEY

T. 148 R. 29/28 5 Mer.

Corner common to Sections 5, 6, 7, and 8

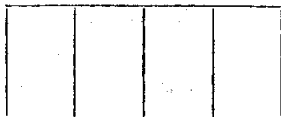
Corner consists of a (not) in place State condition

Dimensions above ground inches

Sketch grooves, letters, figures, or notches, on proper face or edge.

CARDINAL POSITION

DIAGONAL POSITION



N W S E



NW SW SE NE

Mound of is located

Pits are located

Sketch markings of Bearing Trees (or Rocks) in proper box and fill blanks below, giving bearings from Corner to Trees and Distances in Links.



Species cedar

Diameter 7 1/2

Bearing N 25 W

Distance 116

Do you believe this to be a genuine Land Office Corner? yes

If not, why?

Handwritten signature of Fred W. Johnson

(Signature)

Jan 21 1918

(Date)

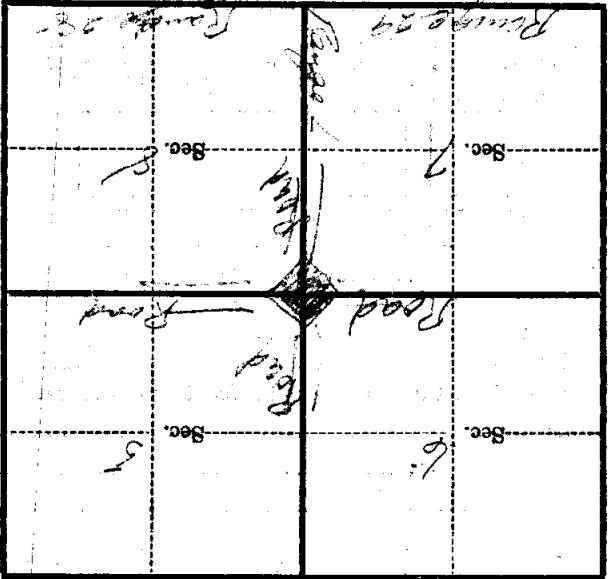
Handwritten title

(Title)

E-5

Corner again.
Road N-
Road E
Road W
Road S
CORNERS CAN BE LOCATED
FROM ANY ONE ROAD

Give any further facts which will aid in finding this
Corner again.
From which this Corner bears
side of
tree 8 inches diameter, on the S E
Metal Location Poster is on a



(Make sketch of topography near Corner)

U. S. Department of Agriculture

FOREST SERVICE

E-5

Chippewa NATIONAL FOREST

CORNERS OF THE PUBLIC SURVEY

T. 148N R. 28W 5th Mer.

Section Corner common to Sections 6, 5, 7, and 8

Corner consists of a interruption (not) in place

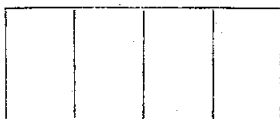
State condition AF Roads

Dimensions above ground _____ inches

Sketch grooves, letters, figures, or notches, on proper face or edge.

CARDINAL POSITION

DIAGONAL POSITION



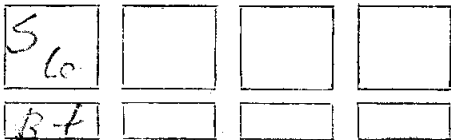
N W S E

NW SW SE NE

Mound of _____ is located _____

Pits are located _____

Sketch markings of Bearing Trees (or Rocks) in proper box and fill blanks below, giving bearings from Corner to Trees and Distances in Links.



Species cedar

Diameter 10"

Bearing N52°W

Distance 1.17

Do you believe this to be a genuine Land Office Corner? Yes

If not, why? _____

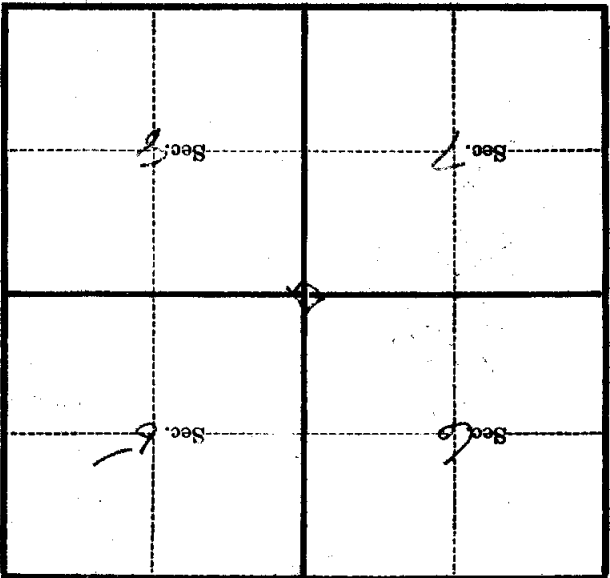
(Signature)

(Date)

(Title)

Metal Location Poster is on a tree _____ inches diameter, on the _____ side of _____ from which this Corner bears _____ chains distant.

Give any further facts which will aid in finding this Corner again.



(Make sketch of topography near Corner)

T. 148 N. R. 28 W. 5 TH Mer.

U. S. Department of Agriculture

FOREST SERVICE

ES

NATIONAL FOREST

CORNERS OF THE PUBLIC SURVEY

T. 1 R. 1 Mer.

Corner common to Sections

1, 2, 3, 4, and 5

Corner consists of a stone ~~(not in place)~~

State condition _____

Dimensions above ground _____ inches

Sketch grooves, letters, figures, or notches, on proper face or edge.

CARDINAL POSITION

DIAGONAL POSITION

--	--	--	--

N W S E

--	--	--	--

NW SW SE NE

Mound of _____ is located _____

Pits are located _____

Sketch markings of Bearing Trees (or Rocks) in proper box and fill blanks below, giving bearings from Corner to Trees and Distances in Links.

<u>BT</u>			

Species Quercus _____

Diameter 1.1 _____

Bearing S. 52° W _____

Distance 1.7 _____

Do you believe this to be a genuine Land Office Corner? Yes

If not, why? _____

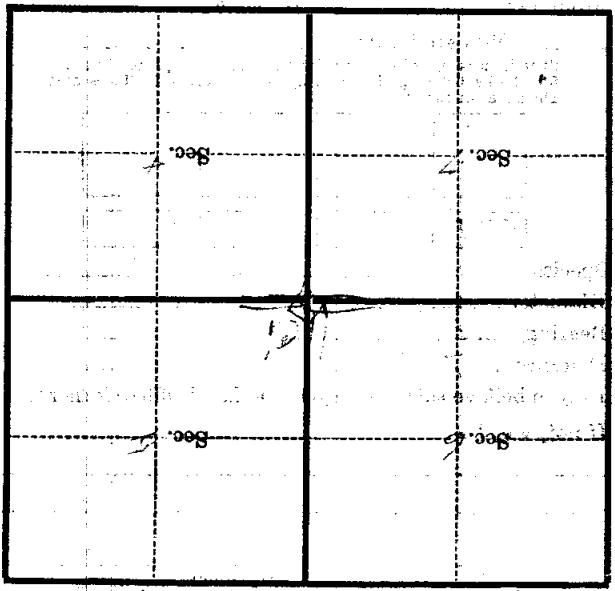
(Signature)

(Date)

(Title)

Corner again.

Give any further facts which will aid in finding this
chains distant.
From which this Corner bears
side of *Tree*
tree *10* inches diameter, on the
Metal Location Poster is on a



(Make sketch of topography near Corner)

T. L. B. N. R. 2. 5. 7. Mer.

U. S. Department of Agriculture
FOREST SERVICE

E-5

Chippewa NATIONAL FOREST

CORNERS OF THE PUBLIC SURVEY

T. 148N R. 28W 5th Mer.

Section 6, 5, 7, and 8
Corner common to Sections

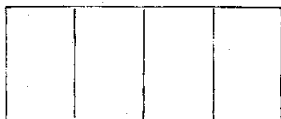
Corner consists of a 1/4 Inters section (not) in place
State condition of floods

Dimensions above ground _____ inches

Sketch grooves, letters, figures, or notches, on proper face or edge.

CARDINAL POSITION

DIAGONAL POSITION



N W S E

NW SW SE NE

Mound of _____ is located _____

Pits are located _____

Sketch markings of Bearing Trees (or Rocks) in proper box and fill blanks below, giving bearings from Corner to Trees and Distances in Links.



Species cedar

Diameter 10"

Bearing N320W

Distance 1.17

Do you believe this to be a genuine Land Office Corner yes

If not, why? _____

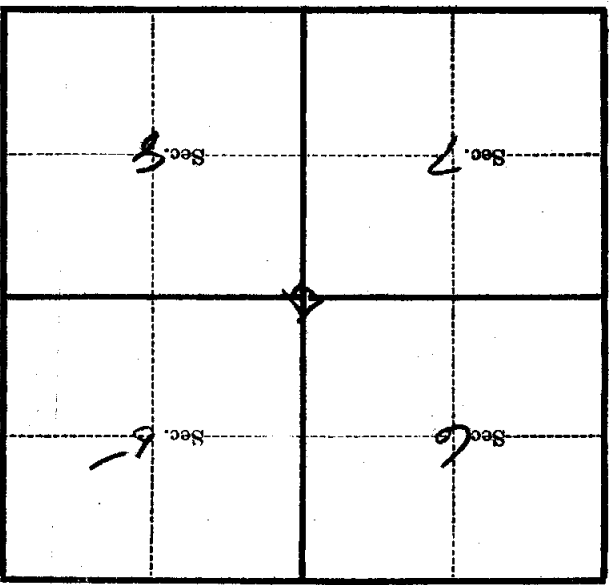
(Signature)

(Date)

(Title)

Metal Location Poster is on a _____
 tree _____ inches diameter, on the _____
 side of _____
 from which this Corner bears _____
 chains distant.

Give any further facts which will aid in finding this
 Corner again.



(Make sketch of topography near Corner)

T. 148 N. R. 28 W. 5th Mer.