

U. S. Department of Agriculture
FOREST SERVICE

N-17

Chippewa NATIONAL FOREST

CORNERS OF THE PUBLIC SURVEY

T. 148 N. R. 27 W. S. 2 Mer.

Section Corner common to Sections
15, 14, 22, and 23

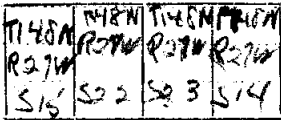
Corner consists of a *post* (rod) in place
State condition *fair*

Dimensions above ground 30 inches

Sketch grooves, letters, figures, or notches, on proper face or edge.

CARDINAL POSITION

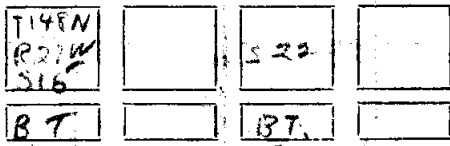
DIAGONAL POSITION



Mound of _____ is located _____

Pits are located _____

Sketch markings of Bearing Trees (or Rocks) in proper box and fill blanks below, giving bearings from Corner to Trees and Distances in Links.



Species *Aspen* *Stump*

Diameter *12"* *14"*

Bearing *N. 57° W.* *S 35° W.*

Distance *38'* *46'*

Do you believe this to be a genuine Land Office Corner? *Y*

If not, why? _____

Ray W. Nelson
(Signature)

2-14-35
(Date)

(Title)

Corner again.

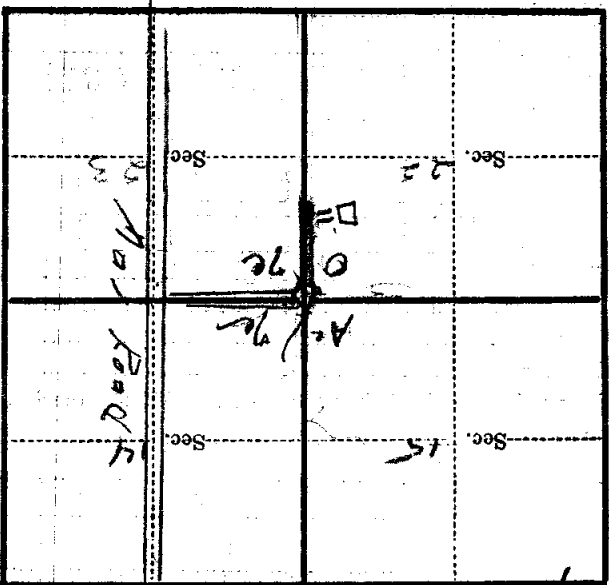
Give any further facts which will aid in finding this

from which this Corner bears ~~30!~~ distant.

side of ~~West~~ *road*

~~6~~ inches diameter, on the ~~West~~ *road*

Metal Location Poster is on a ~~FENCE POST~~ *FENCE POST*



(Make sketch of topography near Corner)

Mer.

R.

T

N.W.

Form 874-9—Revised May, 1918
 U. S. Department of Agriculture
 FOREST SERVICE

N17

Chippewa AGG NATIONAL FOREST

CORNERS OF THE PUBLIC SURVEY

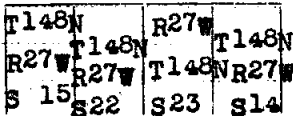
T. 148 N. R. 27 W. 5th Mer.
 section Corner common to Sections
 15, 14, 22, and 23

Corner consists of a post (not) in place
 State condition poor

Dimensions above ground 30 inches
 Sketch grooves, letters, figures, or notches, on proper face or edge.

CARDINAL POSITION

DIAGONAL POSITION



Mound of _____ is located _____

Pits are located _____

Sketch markings of Bearing Trees (or Rocks) in proper box and fill blanks below, giving bearings from Corner to Trees and Distances in Links.

T148N R27W S 15		S 22	
B. T.		B. T.	

Species Aspen (snag) stump
 Diameter 12 14
 Bearing N 57° W S 35° W
 Distance 38 links 46 links

Do you believe this to be a genuine Land Office Corner? **Yes**

If not, why? _____

Roy Nelson
 (Signature)

2/14/35

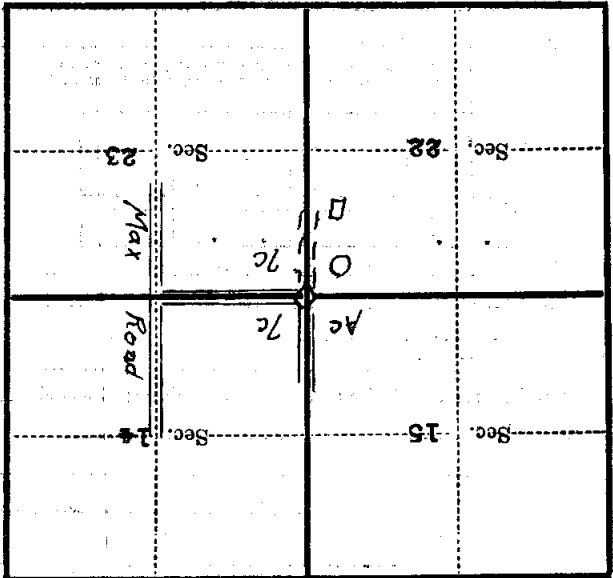
(Date)

chief of party GCG

(Title)

Corner again:

Give any further facts which will aid in finding this
 0.30 chains distant.
 from which this Corner bears west
 side of Road
 inches diameter, on the west
 Metal Location Poster is on a fence post



(Make sketch of topography near Corner)