

U. S. Department of Agriculture
FOREST SERVICE

617

Chippewa NATIONAL FOREST
CORNERS OF THE PUBLIC SURVEY

T. *148N* R. *26W* *Fifth* Mer.

Quarter Corner common to Sections
.....,, *10*, and *11*.....

Corner consists of a *temporary stake* (not) in place
State condition *set in present survey*

Dimensions above ground inches

Sketch grooves, letters, figures, or notches, on proper face or edge.

CARDINAL POSITION

DIAGONAL POSITION

--	--	--	--

N W S E

--	--	--	--

NW SW SE NE

Mound of is located

Pits are located

Sketch markings of Bearing Trees (or Rocks) in proper box and
fill blanks below, giving bearings from Corner to Trees and
Distances in Links.

	$\frac{1}{4}$ 5 10		
	BT		

Species *Cedar (Broken about 4 ft. above ground)*Diameter *8 inches*Bearing *N 11° E (From corner set in present survey)*Distance *5.3 links*Do you believe this to be a genuine Land Office Corner? *yes*

If not, why?

Herbert Norman
(Signature)

Sept. 6, 1934
(Date)

Tech. Foreman
(Title)

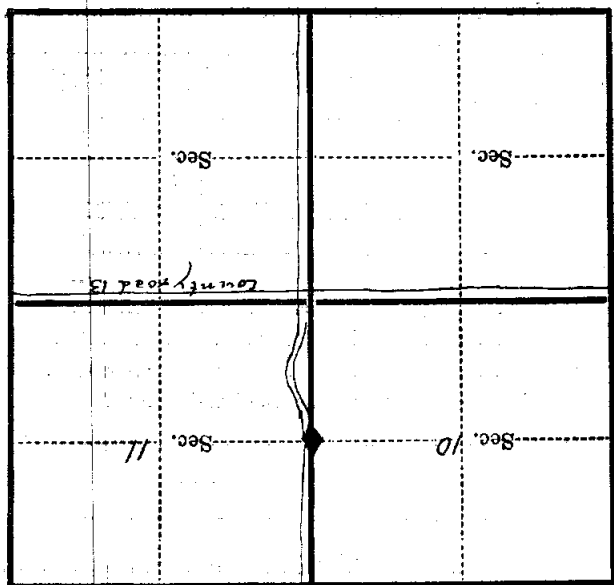
Corner again.
Take County road E to S.W.
corner Sec. 11, Twp North and
follow new grade road for $\frac{1}{2}$ mi.

Give any further facts which will aid in finding this

chains distant.

from which this Corner bears ~~#~~ 18 1/2 miles due N
side of ... f.r.e.

Metal Location Poster is on a large tooth span
tree $11\frac{1}{2}$ inches diameter, on the N.E.



(Make sketch of topography near Corner)

T. 14 S N. R. 26 W. Fifth Mer. G-17