

Form 874-B—Revised May, 1918
U. S. Department of Agriculture
FOREST SERVICE

V19
posted

Chippewa NATIONAL FOREST

CORNERS OF THE PUBLIC SURVEY

T. 148 R. 25 5 Mer.
1/4 Corner common to Sections
35, and 26

Corner consists of a (not) in place
State condition Not found

Dimensions above ground inches.

Sketch grooves, letters, figures, or notches, on proper face or edge.

CARDINAL POSITION

DIAGONAL POSITION

N	W	S	E

NW	SW	SE	NE

Mound of is located

Pits are located

Sketch markings of Bearing Trees (or Rocks) in proper box and fill blanks below, giving bearings from Corner to Trees and Distances in Links.

		1/4 S 26-148 25'	
		BT	

Species W Cedar
Diameter 10"
Bearing NE
Distance 1 Chain

Do you believe this to be a genuine Land Office Corner? No

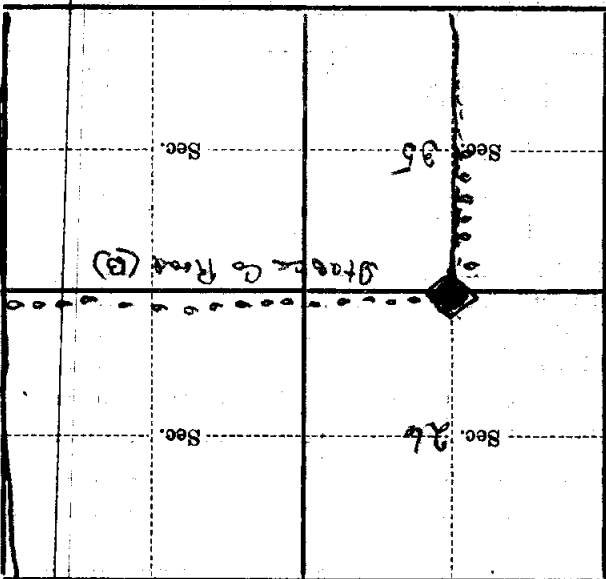
If not, why? To new work think it was established by County Surveyor when laying out Road
W P Maddy

11/25/33
(Date)

(Signature)
Estimator
(Title)

Metal Location Poster is on a _____ inches diameter, on the _____ side of _____ from which this Corner bears _____ chains distant.

Give any further facts which will aid in finding this Corner again.



(Make sketch of topography near Corner)