

U. S. Department of Agriculture
FOREST SERVICE

E-13.

Chippewa NATIONAL FOREST
CORNERS OF THE PUBLIC SURVEY

T. *148N* R. *25W* Mer. *5*

Corner common to Sections

3, *4*, *9*, and *10*

Corner consists of a *post* (not) in place

State condition *good*

Dimensions above ground *204* inches

Sketch grooves, letters, figures, or notches, on proper face or edge.

CARDINAL POSITION

DIAGONAL POSITION

--	--	--	--

N W S E

5	5	5	5
4	9	10	3

NW SW SE NE

Mound of _____ is located _____

Pits are located _____

Sketch markings of Bearing Trees (or Rocks) in proper box and fill blanks below, giving bearings from Corner to Trees and Distances in Links.

Species _____

Diameter _____

Bearing _____

Distance _____

Do you believe this to be a genuine Land Office Corner? *No*

If not, why? *Established by*

County engineers

E. A. Sagen
(Signature)

C. C. C. Cornwall
(Title)

1-16-35
(Date)

Section from West
Corner again.

Give any further facts which will aid in finding this

0.80 chains distant.

from which this Corner bears

N 12 W

side of

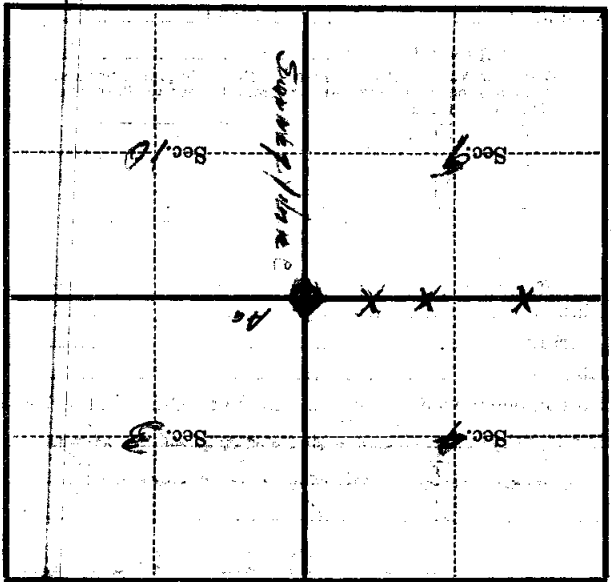
TRAIL

tree $1\frac{1}{4}$ inches diameter, on the

N

Metal Location Poster is on a

Corner



(Make sketch of topography near Corner)

T. H. N. R. 25 W
Mer.

U. S. Department of Agriculture
FOREST SERVICE

E-13.

Chippewa NATIONAL FOREST

CORNERS OF THE PUBLIC SURVEY

T. 148N R. 25W 5th Mer.

Sec Corner common to Sections
3, 4, 9, and 10

Corner consists of a post (not) in place
State condition good

Dimensions above ground 24 inches

Sketch grooves, letters, figures, or notches, on proper face or edge.

CARDINAL POSITION

DIAGONAL POSITION

--	--	--	--

<u>5</u>	<u>5</u>	<u>5</u>	<u>5</u>
<u>4</u>	<u>9</u>	<u>10</u>	<u>3</u>

N W S E

NW SW SE NE

Mound of _____ is located _____

Pits are located _____

Sketch markings of Bearing Trees (or Rocks) in proper box and fill blanks below, giving bearings from Corner to Trees and Distances in Links.

Species _____

Diameter _____

Bearing _____

Distance _____

Do you believe this to be a genuine Land Office Corner? ye

If not, why? _____

1/16/35 B. A. Sagen
(Date) (Signature)
C. C. C. Curdler
(Title)

James line W.

Corner again.

Give any further facts which will aid in finding this

chains distant.

180

from which this Corner bears

N 13° W

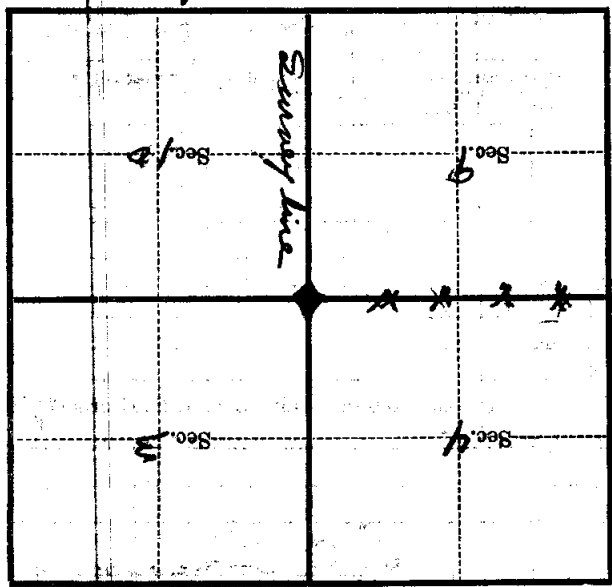
side of

tree

tree 1/4 inches diameter, on the

Cedar N

Metal Location Poster is on a



(Make sketch of topography near Corner)

521 Mer.

T. 148 N. R. 25 W.

U. S. Department of Agriculture
FOREST SERVICE

E-13

Chippewa NATIONAL FOREST
CORNERS OF THE PUBLIC SURVEY

T. *148N* R. *25W* *5th* Mer.

S Corner common to Sections
3, 4, 9, and 10

Corner consists of a *post* (not) in place
State condition *good*

Dimensions above ground *24* inches
Sketch grooves, letters, figures, or notches, on proper face or edge.

CARDINAL POSITION

DIAGONAL POSITION

--	--	--	--

<i>5</i>	<i>5</i>	<i>5</i>	<i>5</i>
<i>4</i>	<i>9</i>	<i>10</i>	<i>3</i>

N W S E

NW SW SE NE

Mound of _____ is located _____

Pits are located _____

Sketch markings of Bearing Trees (or Rocks) in proper box and fill blanks below, giving bearings from Corner to Trees and Distances in Links.

Species _____

Diameter _____

Bearing _____

Distance _____

Do you believe this to be a genuine Land Office Corner? *no*

If not, why? *Established by*

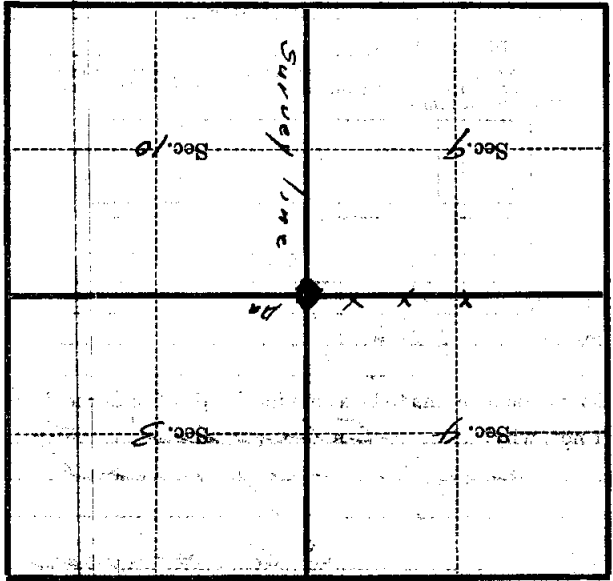
Survey engineers

E. A. Sager
(Signature)

1-16-35
(Date)

E. C. Enroll
(Title)

Corner again.
 Give any further facts which will aid in finding this
 from which this Corner bears *N 12 W*
 side of *Tree*
 tree *14* inches diameter, on the *N*
 Metal Location Poster is on a *Corner*



(Make sketch of topography near Corner)

T. 14 N. R. 25 W. S. 2 Mer.

Form 874-9—Revised May, 1918
 U. S. Department of Agriculture
 FOREST SERVICE

E-13

Chippewa NATIONAL FOREST

CORNERS OF THE PUBLIC SURVEY

T. 148 N R. 25 W 5 Mer.

Sec. Corner common to Sections
 3, 4, 9, and 10

Corner consists of a 4" TAM (not) in place

State condition good (1" iron pipe x 8")

Dimensions above ground 3 Feet inches

Sketch grooves, letters, figures, or notches, on proper face or edge.

CARDINAL POSITION

DIAGONAL POSITION

N	W	S	E

S 4	S 9	S 10	S 3
NW	SW	SE	NE

Mound of _____ is located _____

Pits are located _____

Sketch markings of Bearing Trees (or Rocks) in proper box and fill blanks below, giving bearings from Corner to Trees and Distances in Links.

	S 9	S 10	S 3
	BT	BT	BT

Species cedar cedar cedar

Diameter 14" 16" 18"

Bearing S75 W S22 E N47 W

Distance 41-Li 29-Li 32-Li

Do you believe this to be a genuine Land Office Corner? *yes*

If not, why? _____

Erwin Meagher

(Signature)

8-30-35
 (Date)

Field Ass't
 (Title)

Corner is on N. side of
26 W. 1/4 Sec. E2W

Corner again.

Give any further facts which will aid in finding this

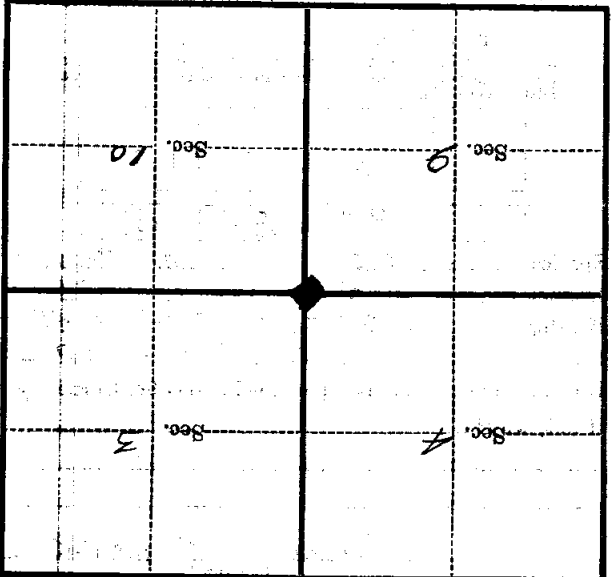
29 ft. ~~chain~~ distant.

from which this Corner bears N22W

side of Tree

tree 16 inches diameter, on the N.W.

Metal Location Poster is on a Cedar



(Make sketch of topography near Corner)

T. 148 N. R. 25 W. S. 4 Mer.

U. S. Department of Agriculture
FOREST SERVICE

E-13

Chippewa NATIONAL FOREST

CORNERS OF THE PUBLIC SURVEY

T. 248 N R. 25 W 5 Mer.

Sec. Corner common to Sections
3, 4, 9, and 10

Corner consists of a 4" L.A.M. (not) in place
State condition good (1" iron pipe x 8")

Dimensions above ground 3 Feet inches

Sketch grooves, letters, figures, or notches, on proper face or edge.

CARDINAL POSITION

DIAGONAL POSITION

N	W	S	E

S	S	S	S
4	9	10	3
NW	SW	SE	NE

Mound of _____ is located _____

Pits are located _____

Sketch markings of Bearing Trees (or Rocks) in proper box and fill blanks below, giving bearings from Corner to Trees and Distances in Links.

	S 9	S 10	S 3
	B.T.	B.T.	B.T.

Species _____ Cedar cedar Cedar
Diameter _____ 14" 16" 18"
Bearing _____ S73W S22E N47W
Distance _____ 41 Li 29 Li 39 Li

Do you believe this to be a genuine Land Office Corner? *YAS*

If not, why? _____

Ernie Meagher
(Signature)

8-30-35
(Date)

Field Ass't
(Title)

COR. ISON N. SIDE OF
76 WHICH BRS E-W

Corner again.

Give any further facts which will aid in finding this

29 ft. chains distant.

From which this Corner bears

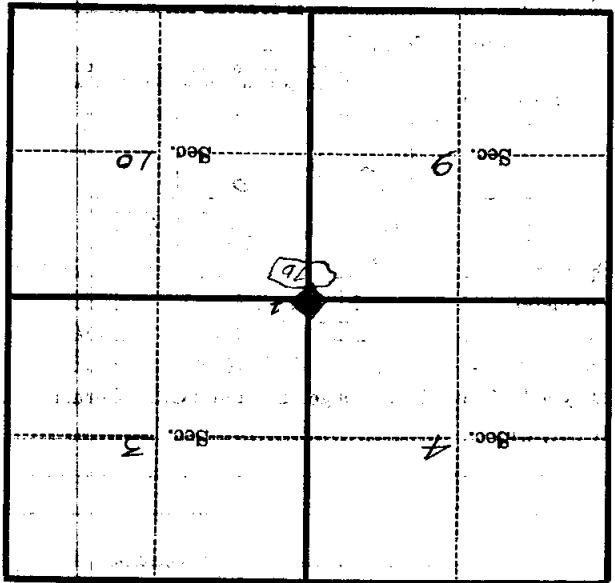
N 22 W

side of Tree

tree 16 inches diameter, on the

N W

Metal Location Poster is on a Cedar



(Make sketch of topography near Corner)

T. 148 N. R. 25 W. 5th Mer.