

Corner no located
in lowland road of
road to show angle

Corner again.

Give any further facts which will aid in finding this

1/2 chains distant.

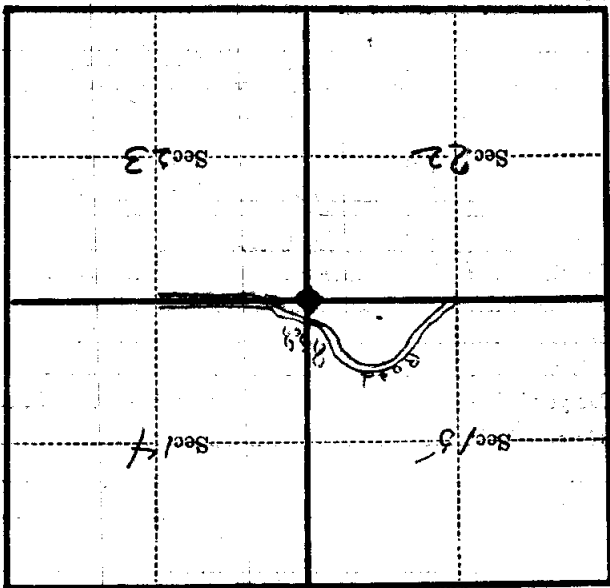
from which this Corner bears

South

side of road

tree 8 inches diameter, on the South side

Metal Location Poster is on a dead cedar



(Make sketch of topography near Corner)

N-17 Mer

R. 31

T. 147

U. S. Department of Agriculture
FOREST SERVICE

posted

N17

Chippewa NATIONAL FOREST

CORNERS OF THE PUBLIC SURVEY

T. 147 R. 31 S. 5 Mer.

Section Corner common to Sections
14, 15, 22, and 23

Corner consists of a cedar post (not) in place
State condition good

Dimensions above ground 3 X 3 inches

Sketch grooves, letters, figures, or notches, on proper face or edge.

CARDINAL POSITION

DIAGONAL POSITION

<u>8/15</u>	<u>5/22</u>	<u>5/23</u>	<u>5/14</u>
<u>14/31</u>	<u>14/31</u>	<u>14/31</u>	<u>14/31</u>

N W S E

NW SW SE NE

Mound of is located

Pits are located

Sketch markings of Bearing Trees (or Rocks) in proper box and fill blanks below, giving bearings from Corner to Trees and Distances in Links.

Species	<u>Cedar</u>	<u>Cedar</u>	<u>Ash</u>	<u>Ash</u>
Diameter	<u>9"</u>	<u>12"</u>	<u>3"</u>	<u>10"</u>
Bearing	<u>S.16°E</u>	<u>S.30°W</u>	<u>N.60°W</u>	<u>N.54E</u>
Distance	<u>45h</u>	<u>45h</u>	<u>20h</u>	<u>45h</u>

Do you believe this to be a genuine Land Office Corner? Yes

If not, why?

Don McDaniel
(Signature)

Estimator
(Title)

1/8/34
(Date)