

Corner again.

Give any further facts which will aid in finding this

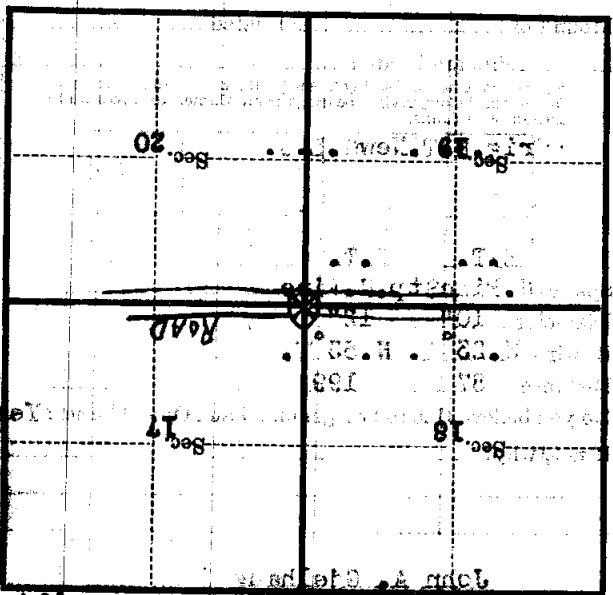
0.18 chains distant.

from which this Corner bears South

side of Post

three 6 inches diameter, on the South

Metal Location Poster is on a Sec. Line Post



(Make sketch of topography near Corner)

T. 141 N. R. 51 W. 5th. P. Mer. N-S

U. S. Department of Agriculture

FOREST SERVICE

N-5

N5

Chippewa NATIONAL FOREST

CORNERS OF THE PUBLIC SURVEY

T. 147 N. R. 31 W. 5th. P. Mer.

Section Corner common to Sections

19, 20, 17, and 18

Corner consists of a Brass Cap Cement (not) in place

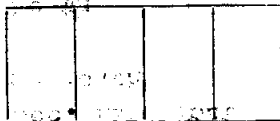
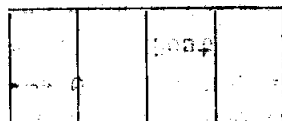
State condition Good

Dimensions above ground 2" under-ground inches

Sketch grooves, letters, figures, or notches, on proper face or edge.

CARDINAL POSITION

DIAGONAL POSITION



Mound of is located

Pits are located

Sketch markings of Bearing Trees (or Rocks) in proper box and fill blanks below, giving bearings from Corner to Trees and Distances in Links.

Orig. B.T. New G.L.O.



Species N. Pine St. N. Pine

Diameter 10" 12"

Bearing N. 25° W. N. 55° W.

Distance 87 199

Do you believe this to be a genuine Land Office Corner? Yes

If not, why?

John A. Gjelhaug

(Signature)

10/6/39

(Date)

Jr. Civil Eng.

(Title)

N-5