

Form 874-0—Revised May, 1918
U. S. Department of Agriculture
FOREST SERVICE

N-3

Chippewa NATIONAL FOREST

CORNERS OF THE PUBLIC SURVEY

T. 147 N. R. 30 W. 5 th P. Mer.

Quarter Corner common to Sections

13, and 24

Corner consists of a Wood Post (not) in place

State condition

Dimensions above ground 29 inches

Sketch grooves, letters, figures, or notches, on proper face or edge.

CARDINAL POSITION

DIAGONAL POSITION

--	--	--	--

N W S E

--	--	--	--

NW SW SE NE

Mound of _____ is located

Pits are located

Sketch markings of Bearing Trees (or Rocks) in proper box and fill blanks below, giving bearings from Corner to Trees and Distances in Links.

Placed F.S. Posters		

Species Aspen Aspen

Diameter 6" 10"

Bearing N. 49° E. N. 15° E.

Distance 89 92

Do you believe this to be a genuine Land Office Corner? Yes

If not, why? _____

J. A. Gjelhaug

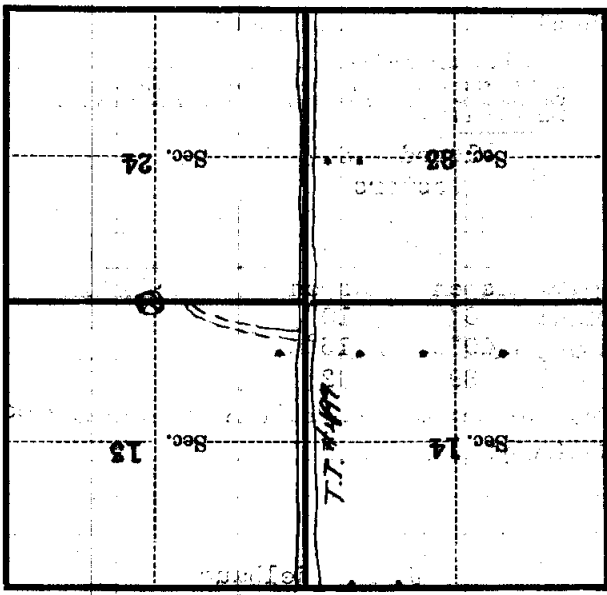
(Signature)

Jr. Civil Eng.

2/23/38

(Date)

(Title)



(Make sketch of topography near Corner)

T. 147 N. R. 50 W. S. 4th P. Mer.

Metal Location Poster is on a

tree 10 inches diameter, on the

side of Tree

from which this Corner bears S. 15° W.

0° 22'

chains distant.

Give any further facts which will aid in finding this

Corner again.