

U. S. Department of Agriculture
FOREST SERVICE

R19

Chippewa NATIONAL FOREST

CORNERS OF THE PUBLIC SURVEY

T. 147 N. R. 29 W. 5th P. Mer.

Quarter Corner common to Sections

23, and 26

Corner consists of an Aspen St. 8" Orig. Cor. in place
and Cedar Post

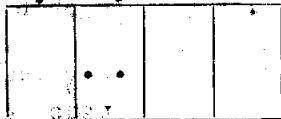
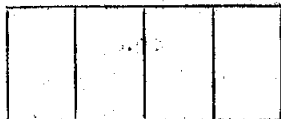
State condition Good

Dimensions above ground 48 inches

Sketch grooves, letters, figures, or notches, on proper face or edge.

CARDINAL POSITION

DIAGONAL POSITION



Mound of is located

Pits are located

Sketch markings of Bearing Trees (or Rocks) in proper box and fill blanks below, giving bearings from Corner to Trees and Distances in Feet.

1/4 S 23			
B.T.			

Species Oak

Diameter 7"

Bearing N. 45° E.

Distance 10

Do you believe this to be a genuine Land Office Corner? Yes

If not, why?

John A. Gjelhaug

(Signature)

12/8/39

(Date)

Jr. Civil Eng.

(Title)

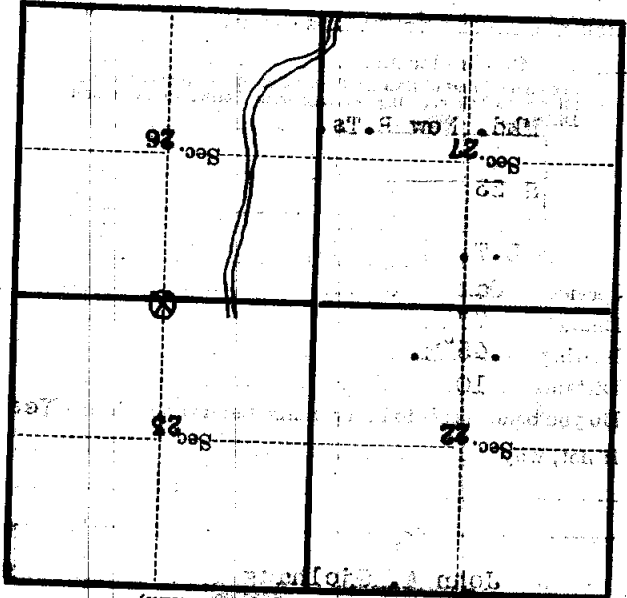
COOPERATED WITH THE BUREAU OF LAND MANAGEMENT
U. S. DEPARTMENT OF THE INTERIOR
BUREAU OF LAND MANAGEMENT

Scrubbed Aspen stub 8" dia. corner.

Corner again. Give any further facts which will aid in finding this
chain distant.

From which this corner bears N-58°W
side of tree

tree 8 inches diameter, on the N.W.
Metal Location Poster is on an Aspen



(Make sketch of topography near corner)

U. S. Department of Agriculture
FOREST SERVICE

R-19

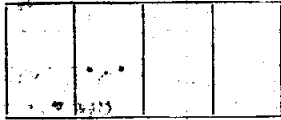
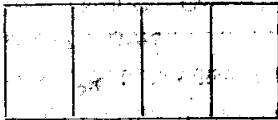
Chippewa NATIONAL FOREST

CORNERS OF THE PUBLIC SURVEY

T. 147 N. R. 29 W. 5th. P. Mer.
Quarter Corner common to Sections

25, and 26
Corner consists of Iron Cor. in place
and Cedar Post
State condition Good

Dimensions above ground 48 inches
Sketch grooves, letters, figures, or notches, on proper face or edge.
CARDINAL POSITION DIAGONAL POSITION



N W S E

NW SW SE NE

Mound of _____ is located _____

Pits are located _____

Sketch markings of Bearing Trees (or Rocks) in proper box and fill blanks below, giving bearings from Corner to Trees and Distances.

<u>1</u> <u>8 23</u>			
<u>B.T.</u>			

Species Oak

Diameter 7"

Bearing N. 45° E.

Distance 10

Do you believe this to be a genuine Land Office Corner? Yes

If not, why? _____

John A. Gishburg

(Signature)

12/8/30

(Date)

Asst. Civil Eng.

(Title)

R-19

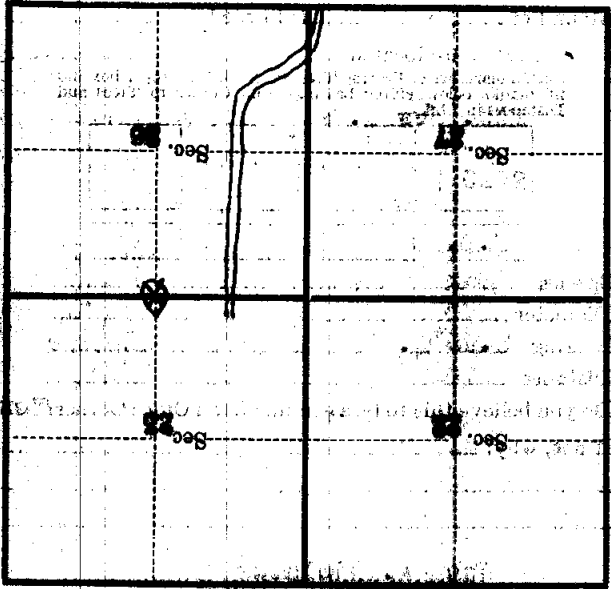
CONTRACT OF THE UNITED STATES
FOR THE SURVEY OF THE
PUBLIC LANDS

Corner again.
Corner consists of a 2 1/2 inch
diameter iron pipe 8 1/2 feet corner.

Give any further facts which will aid in finding this
corner again.
0.11
chains distant.

from which this corner bears N 50 W
side of tree

tree 8 inches diameter, on the N.W.
Metal Location Poster is on a N. corner



(Make sketch of topography near corner)