

X-9

**U. S. Department of Agriculture**  
**FOREST SERVICE**

Chippewa NATIONAL FOREST

**CORNERS OF THE PUBLIC SURVEY**

T. 147 N. R. 29 W. 5th. P. Mer.

Quarter Corner common to Sections

32, and 33

Corner consists of a Cedar Post ~~1855~~ in place

State condition Good

Dimensions above ground 40 inches

Sketch grooves, letters, figures, or notches, on proper face or edge.

CARDINAL POSITION

DIAGONAL POSITION

--	--	--	--

N W S E

--	--	--	--

NW SW SE NE

Mound of \_\_\_\_\_ is located \_\_\_\_\_

Pits are located \_\_\_\_\_

Sketch markings of Bearing Trees (or Rocks) in proper box and fill blanks below, giving bearings from Corner to Trees and Distances in Links.

Orig. B.T.	B.T.
------------	------

Mkd. New B.T.	B.T.
1/4 S 33	1/4 S 33

B.T.	
------	--

B.T.	B.T.
------	------

Species Spruce Stb. Cedar Cedar

Diameter 8" 8" 6"

Bearing S.75°W. N.86°E. N.6°E.

Distance 6 19 12 1/2

Do you believe this to be a genuine Land Office Corner? Yes

If not, why? \_\_\_\_\_

John A. Gjelhaug

(Signature)

12/11/39

(Date)

Jr. Civil Eng.

(Title)

Give any further facts which will aid in finding this corner again.

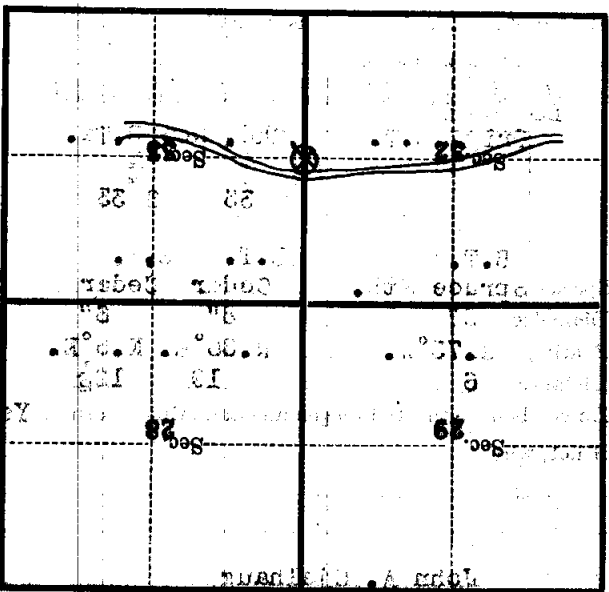
0.10 chains distant.

from which this corner bears S. 86° W.

side of Tree

tree 8 inches diameter, on the West

Metal Location Poster is on a Cedar



(Make sketch of topography near corner)