

U. S. Department of Agriculture

FOREST SERVICE

Chippewa

NATIONAL

South shore of
Cut Point

CORNERS OF THE PUBLIC SURVEY

T. 47 R. 27 S Mer.

Manitou Corner common to Sections

36, and 37

Corner consists of a Iron Post in place

State condition Just created

Dimensions above ground 1" - 28" inches

Sketch grooves, letters, figures, or notches, on proper face or edge.

CARDINAL POSITION

DIAGONAL POSITION

--	--	--	--

N W S E

--	--	--	--

NW SW SE NE

Mound of _____ is located _____

Pits are located _____

Sketch markings of Bearing Trees (or Rocks) in proper box and fill blanks below, giving bearings from Corner to Trees and Distances in Links.

T 147
R 27
S 31

T 147
R 27
S 36

--

--

MC BT

MC BT

--

--

Species J.P. Birch

Diameter 10" 5"

Bearing S 55 E S 37 W

Distance 33 36

Do you believe this to be a genuine Land Office Corner?

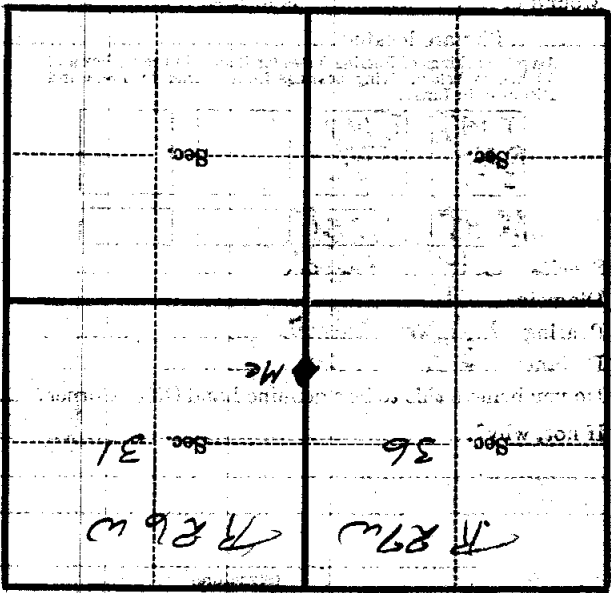
If not, why? Yes

(Signature)

(Date)

(Title)

Metal Location Poster is on a tree inches diameter, on the side of from which this Corner bears *shades distant.* Give any further facts which will aid in finding this Corner again.



(Make sketch of topography near Corner)

T. 17N. R. 27W. S. 31