

U. S. Department of Agriculture
FOREST SERVICE

P
EM9

Chippewa NATIONAL FOREST

CORNERS OF THE PUBLIC SURVEY

T 147 N R 27 W 5th P Mer.

Meander Corner common to Sections
17, and 16

Corner consists of 92 P in place

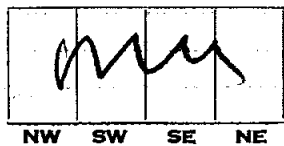
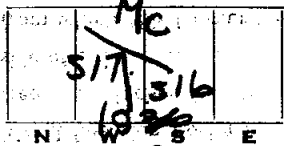
State condition

Dimensions above ground 1" 70 inches

Sketch grooves, letters, figures, or notches, on proper face or edge.

CARDINAL POSITION

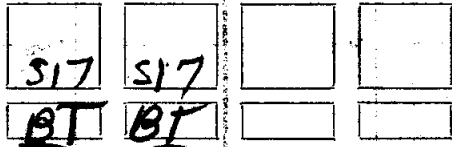
DIAGONAL POSITION



Mound of _____ is located _____

Pits are located _____

Sketch markings of Bearing Trees (or Rocks) in proper box and fill blanks below, giving bearings from Corner to Trees and Distances in Links.



Species Tam Tam

Diameter 6 6

Bearing S 30 W N 50 W

Distance 54 43

Do you believe this to be a genuine Land Office Corner?

If not, why?

[Handwritten signature]

(Signature)

(Date)

(Title)

67b

U.S. Department of Agriculture

FOREST SERVICE

NATIONAL FOREST

CORNERS OF THE PUBLIC SURVEY

Corner signs
Give any further facts which will aid in finding this

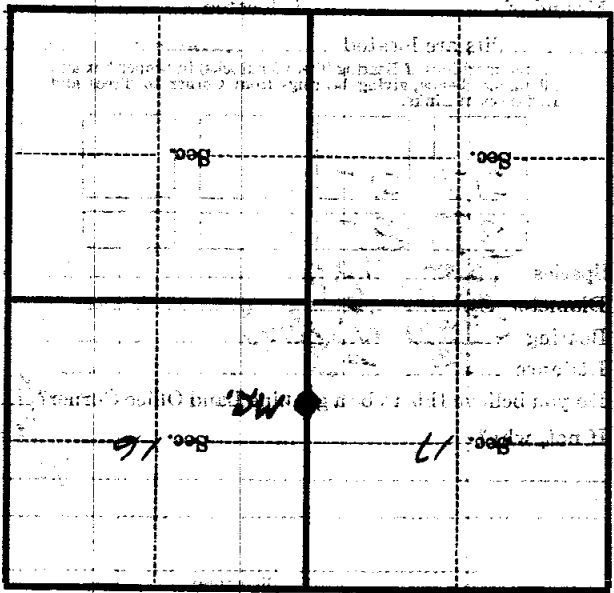
chain distant

from which this Corner bears

side of

tree inches diameter, on the

Metal Location Poster is on a



(Make sketch of topography near Corner)

U. S. Department of Agriculture
FOREST SERVICE

LM-9

Chippewa NATIONAL FOREST

CORNERS OF THE PUBLIC SURVEY

T. 147 R. 27 5th Mer.

M.C.

Corner common to Sections

17, and 16

Corner consists of a Iron pipe (not) in place

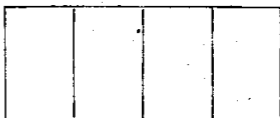
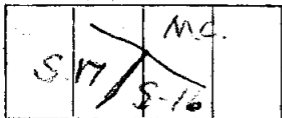
State condition New

Dimensions above ground 1" x 20" inches

Sketch grooves, letters, figures, or notches, on proper face or edge.

CARDINAL POSITION

DIAGONAL POSITION



N W S E

NW SW SE NE

Mound of _____ is located _____

Pits are located _____

Sketch markings of Bearing Trees (or Rocks) in proper box and fill blanks below, giving bearings from Corner to Trees and Distances in Links.

S-17

S-17

B.T.

B.T.

Species TAMM TAMM

Diameter 6" 6"

Bearing S-37W N-52W

Distance .54 .43

Do you believe this to be a genuine Land Office Corner? Yes

If not, why? _____

(Signature)

1936

(Date)

(Title)

Corner again.

Give any further facts which will aid in finding this

chains distant.

from which this Corner bears

side of

tree inches diameter, on the

Metal Location Poster is on a

| | | | |
|--|------|----|------|
| | | | |
| | Sec. | | Sec. |
| | | | |
| | Sec. | 17 | Sec. |
| | | | |
| | Sec. | 16 | Sec. |
| | | | |

(Make sketch of topography near Corner)

T. 147 R. 27 Mer. 5th