

U. S. Department of Agriculture

FOREST SERVICE

E.F. [Signature]

NATIONAL FOREST

CORNERS OF THE PUBLIC SURVEY

T. 141 R. 21 Mer. 5th

Corner common to Sections

12, and 7

Corner consists of a mound (not) in place

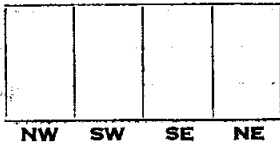
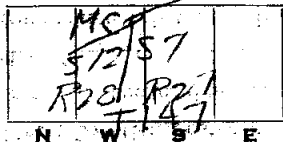
State condition [unclear]

Dimensions above ground 1 1/2 inches

Sketch grooves, letters, figures, or notches, on proper face or edge.

CARDINAL POSITION

DIAGONAL POSITION



Mound of [unclear] is located [unclear]

Pits are located [unclear]

Sketch markings of Bearing Trees (or Rocks) in proper box and fill blanks below, giving bearings from Corner to Trees and Distances in Links.



Species Ash Ash

Diameter 6 10

Bearing S35 1/2 W S75 W

Distance 89 1.86

Do you believe this to be a genuine Land Office Corner?

If not, why?

(Signature)

(Date)

(Title)

3A0

# CORNERS OF THE PUBLIC SURVEY

Corner again:

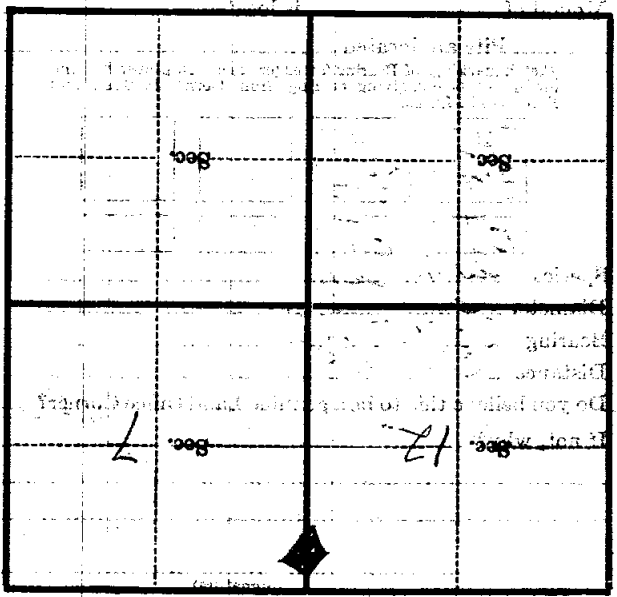
Give any further facts which will aid in finding this  
 than distant

From which this Corner bears

side of

tree inches diameter, on the

Metal Location Poster is on a



(Make sketch of topography near Corner)

U. S. Department of Agriculture  
FOREST SERVICE

E, F-1

Chippewa NATIONAL FOREST

CORNERS OF THE PUBLIC SURVEY

T. 147. R. 27 Mer. 5<sup>th</sup>  
M.C.

Corner common to Sections 12, and 7.

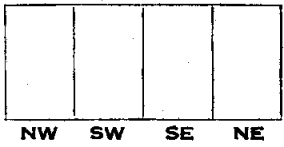
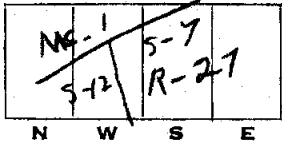
Corner consists of a 2 1/2" pipe (not) in place  
new State condition

Dimensions above ground 2 — 27" inches

Sketch grooves, letters, figures, or notches, on proper face or edge.

CARDINAL POSITION

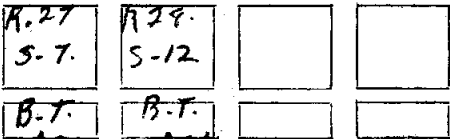
DIAGONAL POSITION



Mound of \_\_\_\_\_ is located \_\_\_\_\_

Pits are located \_\_\_\_\_

Sketch markings of Bearing Trees (or Rocks) in proper box and fill blanks below, giving bearings from Corner to Trees and Distances in Links.



Species *ASH* *ASH*

Diameter 6" 10"

Bearing S-35°E S-26°W

Distance .99 1.86

Do you believe this to be a genuine Land Office Corner? *yes*

If not, why? \_\_\_\_\_

*B. Albee*

(Signature)

1936

(Date)

(Title)

Corner again.

Give any further facts which will aid in finding this

chains distant.

from which this Corner bears

side of

tree inches diameter, on the

Metal Location Poster is on a

	Sec.		Sec.
	Sec. 7	12	Sec.

(Make sketch of topography near Corner)

Mer.

S.H.

R. 27

T. 147

U. S. Department of Agriculture

FOREST SERVICE

Chippewa NATIONAL FOREST

CORNERS OF THE PUBLIC SURVEY

T. 147 R. 27 Mer.

Corner common to Sections

12, and 7

Corner consists of a 5x22 pipe (not) in place

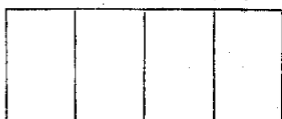
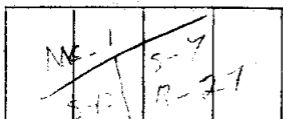
State condition

Dimensions above ground 27 inches

Sketch grooves, letters, figures, or notches, on proper face or edge.

CARDINAL POSITION

DIAGONAL POSITION



N W S E

NW SW SE NE

Mound of is located

Pits are located

Sketch markings of Bearing Trees (or Rocks) in proper box and fill blanks below, giving bearings from Corner to Trees and Distances in Links.



Species Ash Ash

Diameter 6" 12"

Bearing S. 74° E S. 70° W

Distance .79 1.86

Do you believe this to be a genuine Land Office Corner? Yes

If not, why?

Belger

(Signature)

1936

(Date)

(Title)

Corner again.

Give any further facts which will aid in finding this

chains distant.

from which this Corner bears

side of

tree inches diameter, on the

Metal Location Poster is on a

	Sec.		Sec.
	Sec.		Sec.

(Make sketch of topography near Corner)

T. 1127 R. 27 Mer.