

U. S. Department of Agriculture

FOREST SERVICE

T25
2

Chippewa NATIONAL FOREST

CORNERS OF THE PUBLIC SURVEY

T. 147 R. 27 5th Mer.

1/4 Corner Corner common to Sections

25, and 30

Corner consists of a Iron Post (not) in place

State condition Just Erected

Dimensions above ground 2" - 28 - inches

Sketch grooves, letters, figures, or notches, on proper face or edge.

CARDINAL POSITION

DIAGONAL POSITION

	<u>1/4</u>		
<u>525</u>		<u>530</u>	
	<u>1936</u>		
N	W	S	E

<u>Marked</u>			
NW	SW	SE	NE

Mound of _____ is located _____

Pits are located _____

Sketch markings of Bearing Trees (or Rocks) in proper box and fill blanks below, giving bearings from Corner to Trees and Distances in Links.

<u>T147</u>
<u>Rock</u>
<u>530</u>

<u>T147</u>
<u>R27</u>
<u>525</u>

--

--

<u>MCBT</u>

<u>MCBT</u>

--

--

Species N.P. N.P.

Diameter 10" 24"

Bearing N4E S75W

Distance 119 184

Do you believe this to be a genuine Land Office Corner? Yes

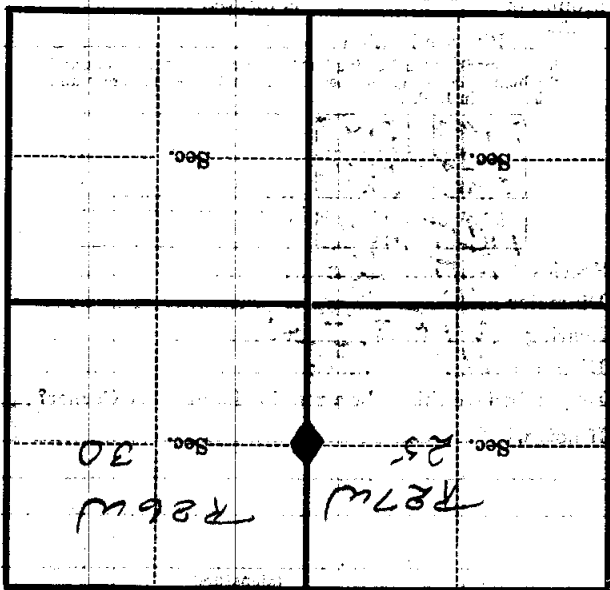
If not, why? _____

(Signature)

(Date)

(Title)

Metal Location Poster is on a tree inches diameter, on the side of from which this Corner bears chains distant. Give any further facts which will aid in finding this Corner again.



(Make sketch of topography near Corner)

T. 147N R. 72W 5th - Mer.

U. S. Department of Agriculture

FOREST SERVICE

T-25

Chipewawa NATIONAL FOREST

CORNERS OF THE PUBLIC SURVEY

T. 147 R. 27 Mer. 26

1/4 Corner common to Sections 25, and 30.

Corner consists of a 1x27 post (not) in place

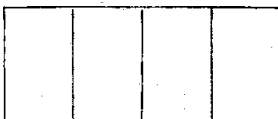
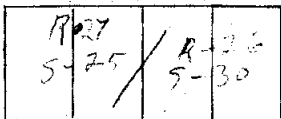
State condition 7230

Dimensions above ground 2" x 2 1/2" inches

Sketch grooves, letters, figures, or notches, on proper face or edge.

CARDINAL POSITION

DIAGONAL POSITION



N W S E

NW SW SE NE

Mound of is located

Pits are located

Sketch markings of Bearing Trees (or Rocks) in proper box and fill blanks below, giving bearings from Corner to Trees and Distances in Links.



Species N-Pine

Diameter 1 1/2"

Bearing N-45E

Distance 1.19

Do you believe this to be a genuine Land Office Corner?

If not, why?

B. Balise

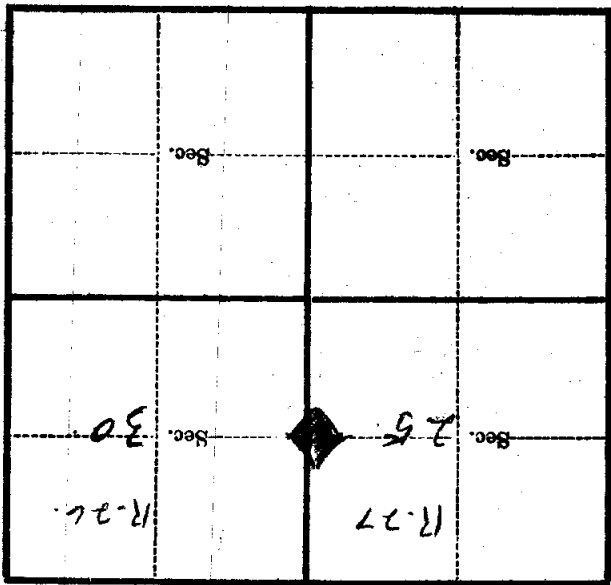
(Signature)

1936

(Date)

(Title)

Metal Location Poster is on a tree _____ inches diameter, on the _____ side of _____ from which this Corner bears _____ chains distant.
 Give any further facts which will aid in finding this Corner again.



(Make sketch of topography near Corner)

T. 147 R. 27 Mer. 5th

U. S. Department of Agriculture

FOREST SERVICE

*Copied
Posted
9
136*
T-25

NATIONAL FOREST

CORNERS OF THE PUBLIC SURVEY

T. 147 R. 27, 26 5 Mer.

$\frac{1}{4}$ Corner common to Sections 25, 30, and

Corner consists of a no stake (not) in place
State condition

Dimensions above ground inches

Sketch grooves, letters, figures, or notches, on proper face or edge.

CARDINAL POSITION

DIAGONAL POSITION

--	--	--	--

N W S E

--	--	--	--

NW SW SE NE

Mound of is located

Pits are located

Sketch markings of Bearing Trees (or Rocks) in proper box and fill blanks below, giving bearings from Corner to Trees and Distances in Links.

Species

Diameter

Bearing

Distance

Do you believe this to be a genuine Land Office Corner?

If not, why?

(Signature)

(Date)

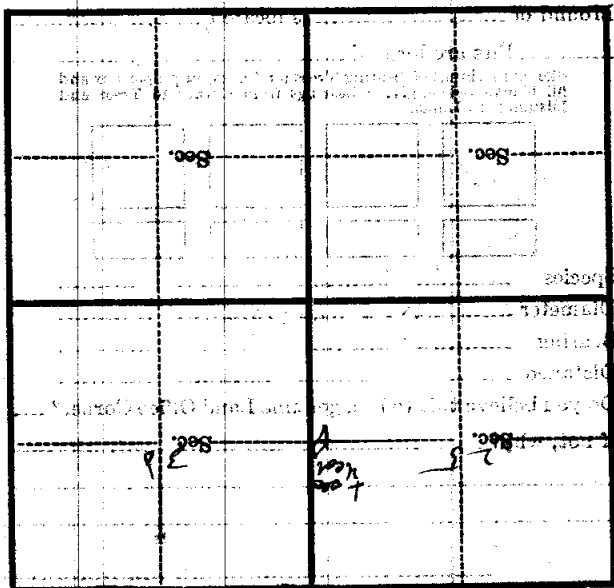
(Title)

CORNER OF THE FIRST AVENUE
 AND THE ...
 ...
 ...

25 N P N 10 E 20 ft strip

Corner again.

Give any further facts which will aid in finding this
 ...
 ...
 from which this Corner bears
 ...
 side of
 tree
 inches diameter, on the
 Metal Location Post is on a



(Make sketch of topography near Corner)

U. S. Department of Agriculture

FOREST SERVICE

Chippewa NATIONAL FOREST

T-25

CORNERS OF THE PUBLIC SURVEY

T. 147 R. 27 5th Mer. 1/4 Corner common to Sections 25, and 30.

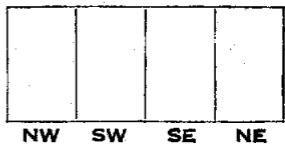
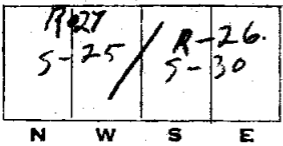
Corner consists of a IRON POST (not) in place State condition New.

Dimensions above ground 2" X 78" inches

Sketch grooves, letters, figures, or notches, on proper face or edge.

CARDINAL POSITION

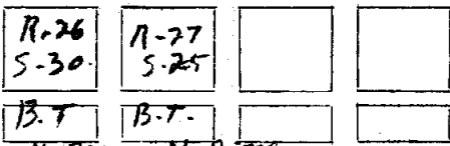
DIAGONAL POSITION



Mound of is located

Pits are located

Sketch markings of Bearing Trees (or Rocks) in proper box and fill blanks below, giving bearings from Corner to Trees and Distances in Links.



Species N-Pine. N-PINE. Diameter 10" 24" Bearing N. 40 E. S-75 W. Distance 1.19 1.94

Do you believe this to be a genuine Land Office Corner?

If not, why?

Balke. (Signature) Leader. (Title)

1936. (Date)

Corner again.

Give any further facts which will aid in finding this

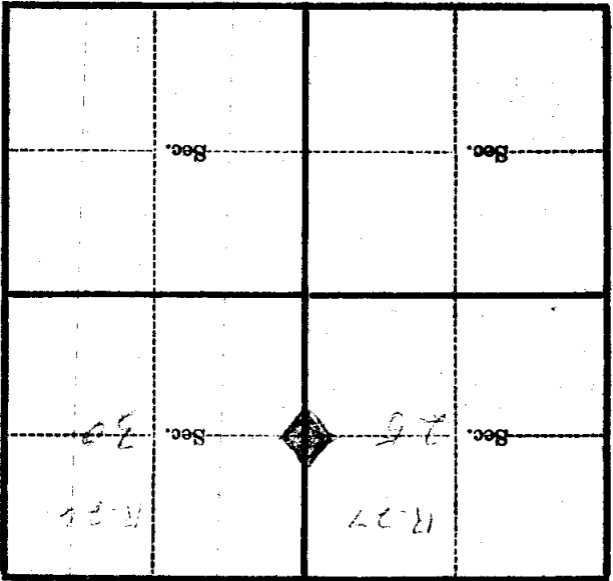
chains distant.

from which this Corner bears

side of

tree inches diameter, on the

Metal Location Poster is on a



(Make sketch of topography near Corner)

Mer.

5 R. 27

R. 27

R.

T. 147