

U. S. Department of Agriculture

FOREST SERVICE

517P

Chippewa NATIONAL FOREST

CORNERS OF THE PUBLIC SURVEY

T. 197N R. 27W 5th Mer.

Section Corner common to Sections 10, 11, 15, and 14

Corner consists of a Concrete Mon. (not) in place

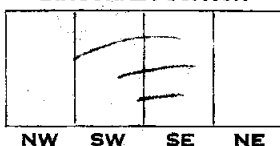
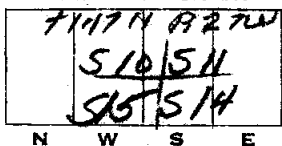
State condition Just Erected

Dimensions above ground 6-24-20 inches

Sketch grooves, letters, figures, or notches, on proper face or edge.

CARDINAL POSITION

DIAGONAL POSITION



Mound of _____ is located _____

Pits are located _____

Sketch markings of Bearing Trees (or Rocks) in proper box and fill blanks below, giving bearings from Corner to Trees and Distances in Links.

S 11	S 14	S 15	S 10
B.T.	B.T.	B.T.	B.T.

Species N.D. N.D. J.P. N.D.
 Diameter 8" 6" 6" 8"
 Bearing N18 1/4 E S 87 1/4 E S 39 1/2 W N 62 3/4 W
 Distance 75 35 53 68

Do you believe this to be a genuine Land Office Corner? yes

If not, why? _____

(Signature)

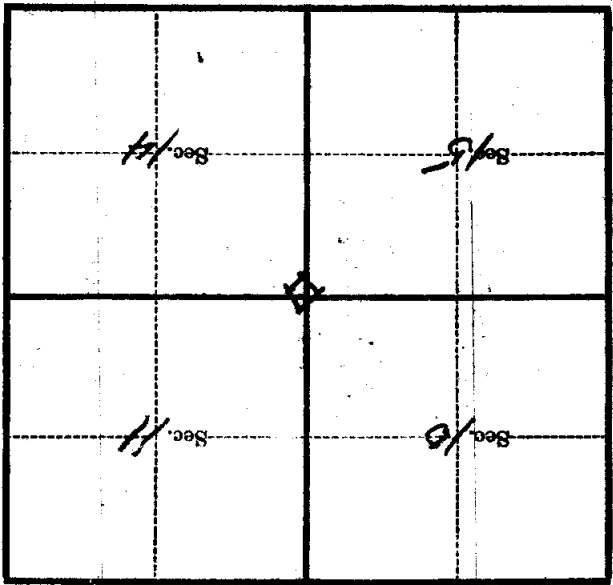
1936
(Date)

(Title)

46

Metal Location Poster is on a tree _____ inches diameter, on the _____ side of _____ from which this Corner bears _____ chains distant.

Give any further facts which will aid in finding this Corner again.



(Make sketch of topography near Corner)

T. MAIN R. 27W 5-7N Mer.

U. S. Department of Agriculture
FOREST SERVICE

Chippewa NATIONAL FOREST

J-17

CORNERS OF THE PUBLIC SURVEY

T. 147N R. 27W 5th Mer.

Section Corner common to Sections
10, 11, 15, and 14

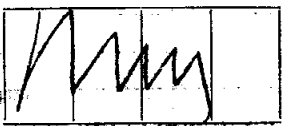
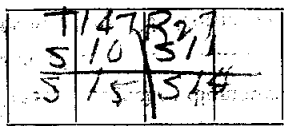
Corner consists of a con. stone (set) in place
State condition good

Dimensions above ground 6x24x20 inches

Sketch grooves, letters, figures, or notches, on proper face or edge.

CARDINAL POSITION

DIAGONAL POSITION



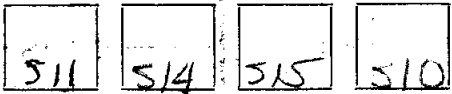
N. W. S. E.

NW SW SE NE

Mound of _____ is located _____

Pits are located _____

Sketch markings of Bearing Trees (or Rocks) in proper box and fill blanks below, giving bearings from Corner to Trees and Distances in Links.



Species NP NP JP NP

Diameter 6" 6" 6" 6"

Bearing N10 1/2 E 544 54 1/2 E S30 1/2 W N62 1/2 W

Distance 75 35 53 68

Do you believe this to be a genuine Land Office Corner? Yes

If not, why? _____

(Signature)

(Date)

(Title)

NAME OF PROJECT

CORNER OF THE PUBLIC SURVEY

Corner sign

Give any further facts which will aid in finding this

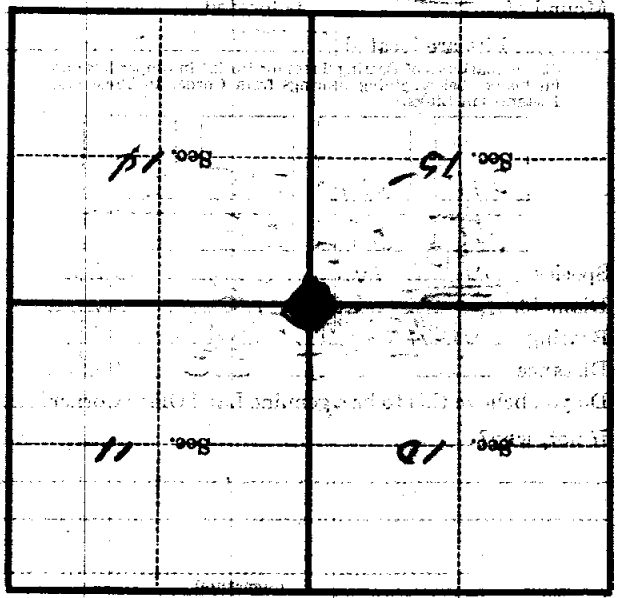
corner distant

from which this corner bears

side of

tree inches diameter, on the

Metal Location Poster is on a



(Make sketch of topography near Corner)

U. S. Department of Agriculture
FOREST SERVICE

J-17.

Chippewa NATIONAL FOREST
CORNERS OF THE PUBLIC SURVEY

T. 147N R. 27W 5th Mer.

Section Corner common to Sections
10, 11, 15, and 14

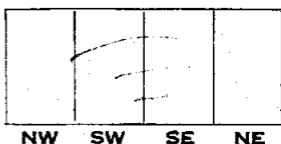
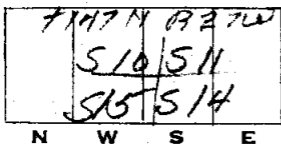
Corner consists of a Concrete Mon. (not) in place
State condition Just Erected

Dimensions above ground 6-24-20 inches

Sketch grooves, letters, figures, or notches, on proper face or edge.

CARDINAL POSITION

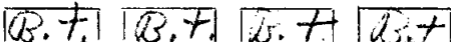
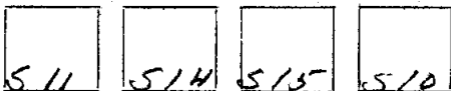
DIAGONAL POSITION



Mound of _____ is located _____

Pits are located _____

Sketch markings of Bearing Trees (or Rocks) in proper box and fill blanks below, giving bearings from Corner to Trees and Distances in Links.



Species N.P. N.P. J.P. N.P.
Diameter 8" 6" 6" 8"
Bearing N18 1/4° E S77 1/4° W S39 1/2° W N62 3/4° W
Distance 75 35 53 68

Do you believe this to be a genuine Land Office Corner? yes
If not, why? _____

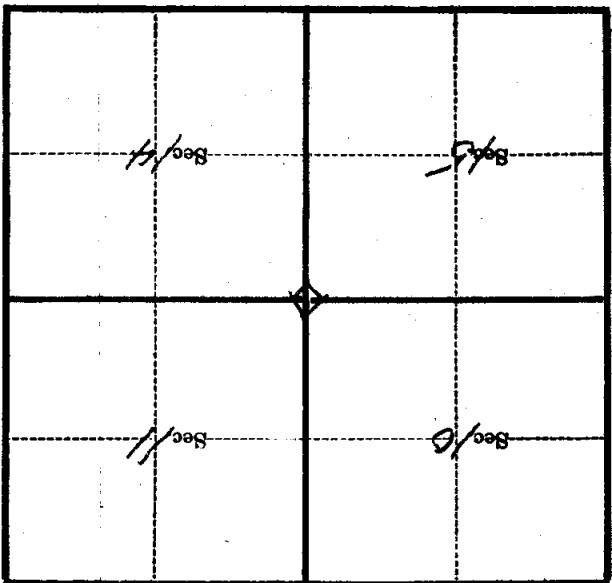
(Signature)

1936
(Date)

(Title)

46

Metal Location Poster is on a tree _____ inches diameter, on the _____ side of _____ from which this Corner bears _____ chains distant.
 Give any further facts which will aid in finding this Corner again.



(Make sketch of topography near Corner)

T. 147N R. 27E S. 14 Mer.