

U. S. Department of Agriculture

FOREST SERVICE

Hippawa NATIONAL FOREST A-15

CORNERS OF THE PUBLIC SURVEY

T. 149N R. R7W 5th Mer.

1/4 Corner Corner common to Sections
34, and 3

Corner consists of a Iron Pipe in place

State condition Good

Dimensions above ground 2' - 2 1/2" inches

Sketch grooves, letters, figures, or notches, on proper face or edge.

CARDINAL POSITION

DIAGONAL POSITION

<u>1/4</u>	<u>S 34</u>		
<u>4</u>	<u>S 3</u>		
	<u>1936</u>		
N	W	E	E

<u>Marked</u>			
NW	SW	SE	NE

Mound of _____ is located _____

Pits are located _____

Sketch markings of Bearing Trees (or Rocks) in proper box and fill blanks below, giving bearings from Corner to Trees and Distances in Links.

<u>S 34</u>	<u>S 3</u>		
<u>BT</u>	<u>BT</u>		

Species JP JP

Diameter 10" 4"

Bearing N 60 1/2 W S 89 E

Distance 3.75 1.85

Do you believe this to be a genuine Land Office Corner?

If not, why? Yes

(Signature)

(Date)

(Title)

CORNERS OF THE PUBLIC SURVEY

Corner again. There may be further facts which will aid in finding this

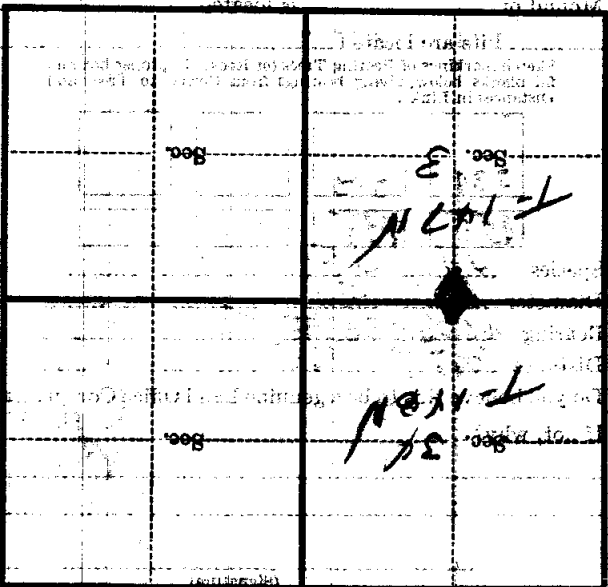
chains distant.

from which this Corner bears

side of

tree inches diameter, on the

Metal Location Poster is on a



(Make sketch of topography near Corner)

T. 127 N. R. 29 W. S. 12 N. Mer.

U. S. Department of Agriculture
FOREST SERVICE

PA 15

Chippewa NATIONAL FOREST

CORNERS OF THE PUBLIC SURVEY

T. 177N R. 27W 5th Mer.

1/4 Corner common to Sections
34, and 3

Corner consists of a iron pipe (not) in place

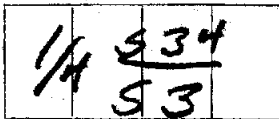
State condition just erected

Dimensions above ground 2" - 2 1/2" inches

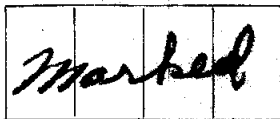
Sketch grooves, letters, figures, or notches, on proper face or edge.

CARDINAL POSITION

DIAGONAL POSITION



N W S E

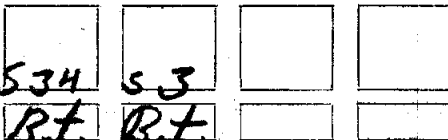


NW SW SE NE

Mound of _____ is located _____

Pits are located _____

Sketch markings of Bearing Trees (or Rocks) in proper box and fill blanks below, giving bearings from Corner to Trees and Distances in Links.



Species 1P. 4P.

Diameter 1 1/2" 4P.

Bearing N69W 5890F

Distance 3.75 1.85

Do you believe this to be a genuine Land Office Corner?

If not, why?

yes

1936
(Date)

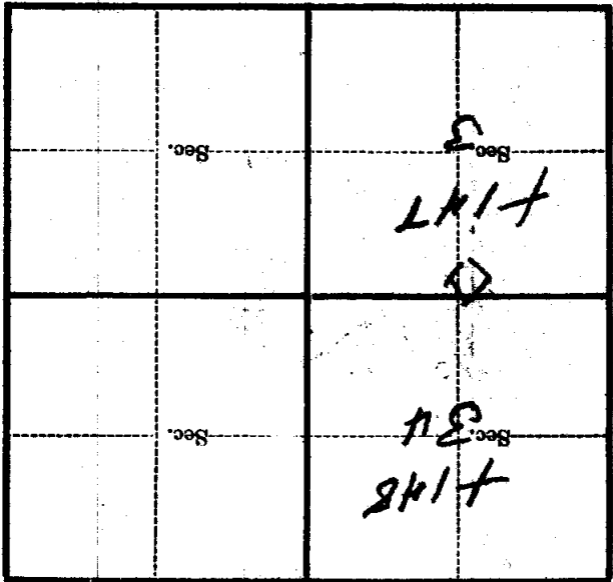
(Signature)

(Title)

14

(Make sketch or topography near Corner)

T. 147 R. 27 S. 4th Mer.



Metal Location Poster is on a _____ inches diameter, on the _____ side of _____ from which this Corner bears _____ chains distant.

Give any further facts which will aid in finding this

Corner again.

Form 874-9—Revised May, 1918
 U. S. Department of Agriculture
 FOREST SERVICE

A-15

Chippewa NATIONAL FOREST
 CORNERS OF THE PUBLIC SURVEY

T. 177N R. 27W 5th Mer.

1/4 Corner common to Sections
 31, and 3

Corner consists of a ~~Iron Pipe~~ (not) in place
 State condition Just Erected

Dimensions above ground 2' - 25' inches

Sketch grooves, letters, figures, or notches, on proper face or edge.

CARDINAL POSITION

DIAGONAL POSITION

1/4	S34		
	S3		

N W S E

Marked			
--------	--	--	--

NW SW SE NE

Mound of _____ is located _____

Pits are located _____

Sketch markings of Bearing Trees (or Rocks) in proper box and fill blanks below, giving bearings from Corner to Trees and Distances in Links.

S34	S3		
B.T.	B.T.		

Species JP: 40'

Diameter 10" 40'

Bearing N 89° W 589° E

Distance 3.75 1.85

Do you believe this to be a genuine Land Office Corner? yes

If not, why? _____

(Signature)

1936

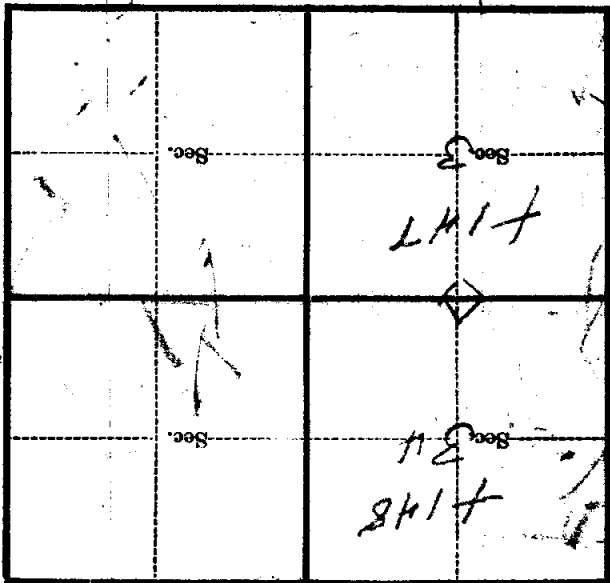
(Date)

(Title)

14

(Make sketch of topography near Corner)

T. 147 R. 27 S. 44 Mer.



Metal Location Poster is on a

tree inches diameter, on the

side of

from which this Corner bears

chains distant.

Give any further facts which will aid in finding this

Corner again.