

U. S. Department of Agriculture

FOREST SERVICE

Page 60
of Book B
Chippewa

L-13

NATIONAL FOREST
CORNERS OF THE PUBLIC SURVEY

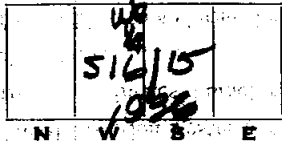
T. 147N R. 27W 5th - Mer.

Corner common to Sections 16, and 15

Corner consists of Iron Pipe in place

State condition _____
Dimensions above ground 1' 21 inches

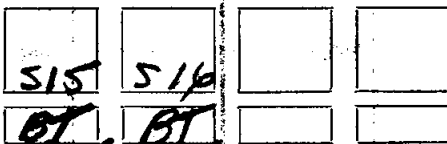
Sketch grooves, letters, figures, or notches, on proper face or edge.
CARDINAL POSITION DIAGONAL POSITION



Mound of _____ is located _____

Pits are located _____

Sketch markings of Bearing Trees (or Rocks) in proper box and fill blanks below, giving bearings from Corner to Trees and Distances in Links.



Species Cedar Cedar
 Diameter 5" 7"
 Bearing SSW N 20 W
 Distance 65 122

Do you believe this to be a genuine Land Office Corner? Yes

If not, why? _____

(Signature)

(Date)

(Title)

64

WATER RESOURCES DIVISION

FIELD NOTES

CORNER OF THE PUBLIC SURVEY

Give any further facts which will aid in finding this corner again.

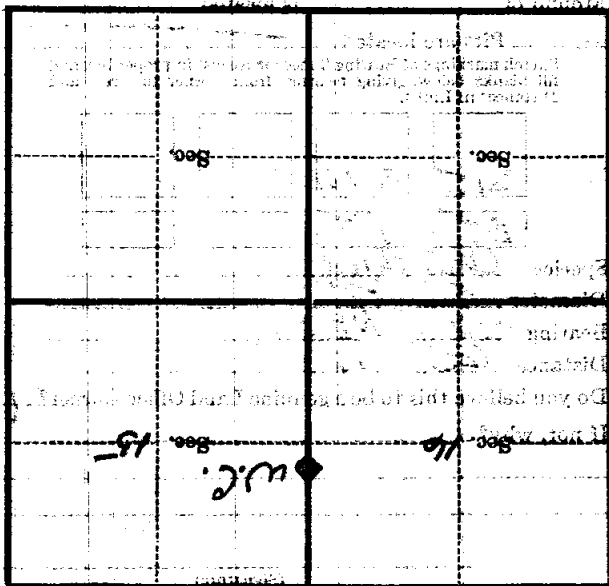
chains distant.

From which this Corner bears

side of

tree inches diameter, on the

Metal Location Poster is on a



(Make sketch of topography near Corner)

U. S. Department of Agriculture

FOREST SERVICE

*Copied
Posted
9/36.
L13*

..... NATIONAL FOREST

CORNERS OF THE PUBLIC SURVEY

T. 147 R. 27 S. 5 Mer.

..... Corner common to Sections

15, 16, and

Corner consists of a gone (not) in place
State condition

Dimensions above ground inches

Sketch grooves, letters, figures, or notches, on proper face or edge.

CARDINAL POSITION

DIAGONAL POSITION

--	--	--	--

N W S E

--	--	--	--

NW SW SE NE

Mound of is located

Pits are located

Sketch markings of Bearing Trees (or Rocks) in proper box and fill blanks below, giving bearings from Corner to Trees and Distances in Links.

Species

Diameter

Bearing

Distance

Do you believe this to be a genuine Land Office Corner?

If not, why?

.....

.....

..... (Signature)

(Date)

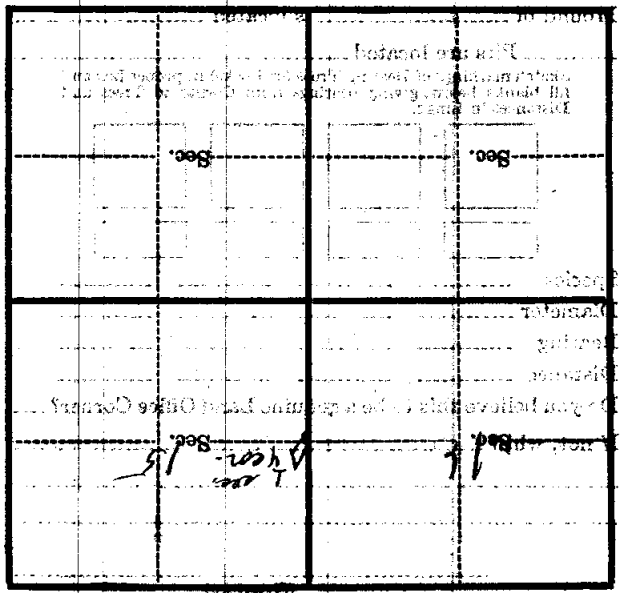
(Title)

UNITED STATES DEPARTMENT OF THE INTERIOR

CORNER OF THE PUBLIC SURVEY

Section 14-18-18
Order 8
Corner Again.

Give any further facts which will aid in finding this corner from which this corner bears
side of
tree
inches diameter, on the
Metal Location Poster is on a



(Make sketch of topography near Corner)

U. S. Department of Agriculture

FOREST SERVICE

L-13

Chippewa NATIONAL FOREST

CORNERS OF THE PUBLIC SURVEY

T. 147N R. 27W 5th Mer.

Corner common to Sections

16, and 15

Corner consists of a Iron Pipe (not) in place

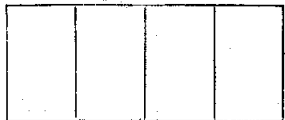
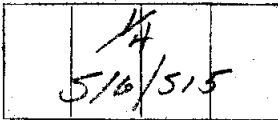
State condition just erected

Dimensions above ground 1' - 21' inches

Sketch grooves, letters, figures, or notches, on proper face or edge.

CARDINAL POSITION

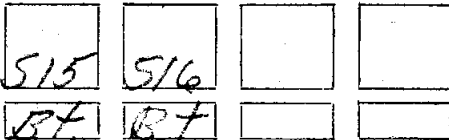
DIAGONAL POSITION



Mound of _____ is located _____

Pits are located _____

Sketch markings of Bearing Trees (or Rocks) in proper box and fill blanks below, giving bearings from Corner to Trees and Distances in Links.



Species Cedar Cedar

Diameter 3 11

Bearing 554° E N70 1/4° W

Distance 65 122

Do you believe this to be a genuine Land Office Corner? If not, why?

(Signature)

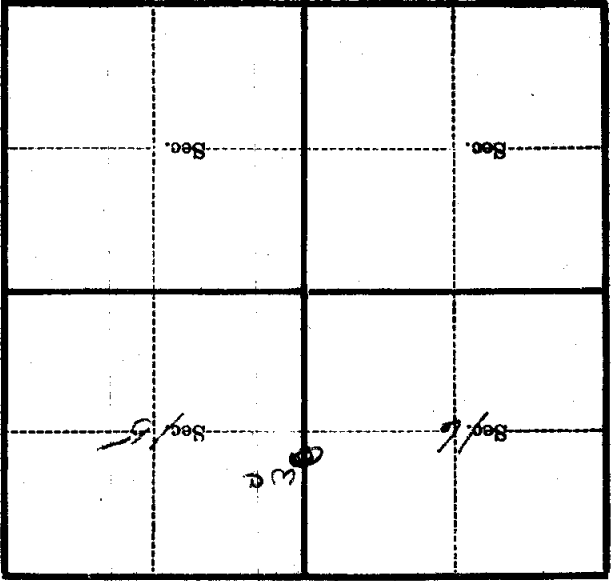
(Date)

(Title)

LT

Metal Location Poster is on a tree _____ inches diameter, on the _____ side of _____ from which this Corner bears _____ chains distant.

Give any further facts which will aid in finding this Corner again.



(Make sketch of topography near Corner)

T. LATHAN R. 2700
 5th Mer.