

U. S. Department of Agriculture
FOREST SERVICE

R
E3

Chippewa NATIONAL FOREST

CORNERS OF THE PUBLIC SURVEY

T. 17N R. 27W 5th Mer.

1/4 Corner common to Sections
6 and 7

Corner consists of a Iron Pipe in place

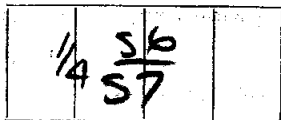
State condition Good

Dimensions above ground 1 1/2 inches

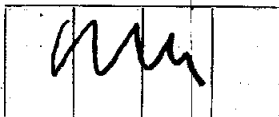
Sketch grooves, letters, figures, or notches, on proper face of edge.

CARDINAL POSITION

DIAGONAL POSITION



N W S E



NW SW SE NE

Mound of _____ is located _____

Pits are located _____

Sketch markings of Bearing Trees (or Rocks) in proper box and fill blanks below, giving bearings from Corner to Trees and Distances in Links.

<u>S6</u>	<u>S7</u>		
<u>BT</u>	<u>BT</u>		

Species Maple Birch

Diameter 8 7"

Bearing N73 1/2 E S 25 1/4 W

Distance 24 30

Do you believe this to be a genuine Land Office Corner? Yes

If not, why? _____

(Signature)

(Date)

(Title)

33

Series of horizontal dashed lines for writing.

Corner again.

Give any further facts which will aid in finding this

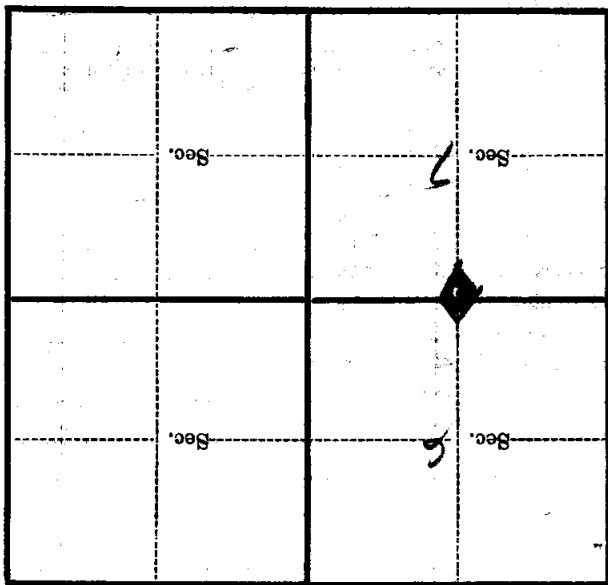
chains distant.

from which this Corner bears

side of

tree inches diameter, on the

Metal Location Poster is on a



(Make sketch of topography near Corner)

T. 1412 N. R. 29 W. Mer.

U. S. Department of Agriculture
FOREST SERVICE

E-3

~~Chippewa~~ NATIONAL FOREST
CORNERS OF THE PUBLIC SURVEY

T. 147N R. 27W 5th Mer.

44 Corner common to Sections

6, and 7

Corner consists of a Iron Pipe (not) in place

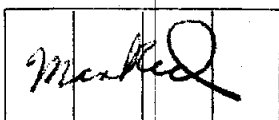
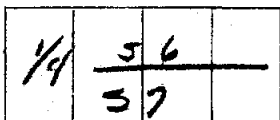
State condition Just erected

Dimensions above ground 11" x 2 1/2" inches

Sketch grooves, letters, figures, or notches, on proper face or edge.

CARDINAL POSITION

DIAGONAL POSITION



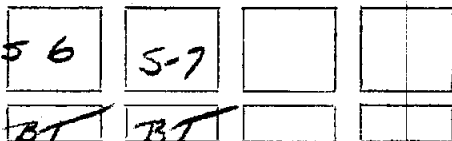
N W S E

NW SW SE NE

Mound of _____ is located _____

Pits are located _____

Sketch markings of Bearing Trees (or Rocks) in proper box and fill blanks below, giving bearings from Corner to Trees and Distances in Links.



Species Maple Birch

Diameter 8" 7"

Bearing N-33 1/2° E-25 1/4 W

Distance 24 38

Do you believe this to be a genuine Land Office Corner? Yes

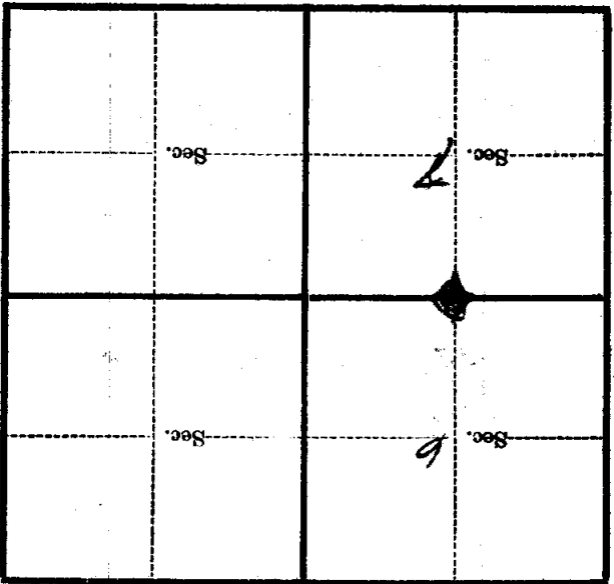
If not, why? _____

(Signature)

1936
(Date)

(Title)

Metal Location Poster is on a tree inches diameter, on the side of from which this Corner bears chains distant. Give any further facts which will aid in finding this Corner again.



(Make sketch of topography near Corner)

T. 147N R. 27W 57E Mer.

Form 874-9—Revised May, 1918
 U. S. Department of Agriculture
 FOREST SERVICE

F. 3

Wippana NATIONAL FOREST
 CORNERS OF THE PUBLIC SURVEY

T. 147N R. 27W 5th Mer.

44 Corner common to Sections
4, and 7

Corner consists of a Iron Pipe (not) in place

State condition Just Erected

Dimensions above ground 1" — 29" inches

Sketch grooves, letters, figures, or notches, on proper face or edge.

CARDINAL POSITION

DIAGONAL POSITION

<u>1/4</u>	<u>56</u>		
	<u>37</u>		

<u>Marked</u>			
---------------	--	--	--

N W S E NW SW SE NE

Mound of _____ is located _____

_____ Pits are located _____

Sketch markings of Bearing Trees (or Rocks) in proper box and fill blanks below, giving bearings from Corner to Trees and Distances in Links.

<u>56</u>	<u>5-7</u>		
<u>BT</u>	<u>BT</u>		

Species Maple Birch

Diameter 8" 2"

Bearing N. 33 1/2° E. 25 1/4 W

Distance .24 .38

Do you believe this to be a genuine Land Office Corner? Yes

If not, why? _____

(Signature)

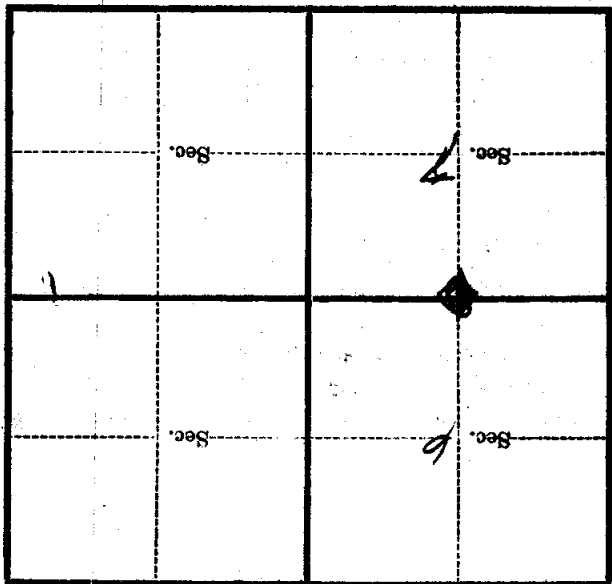
1936

(Date)

(Title)

Metal Location Poster is on a tree _____ inches diameter, on the _____ side of _____ from which this Corner bears _____ chains distant.

Give any further facts which will aid in finding this Corner again.



(Make sketch of topography near Corner)

T. 147N R. 27W 5TH Mer.