

U. S. Department of Agriculture
FOREST SERVICE

R
E3

Chippewa NATIONAL FOREST

CORNERS OF THE PUBLIC SURVEY

T. 17N R. 27W 5th Mer.

1/4 Corner common to Sections

Corner consists of a *QEP* in place
State condition

Dimensions above ground *1 1/2* inches
Sketch grooves, letters, figures, or notches, on proper face of edge.

| CARDINAL POSITION | | DIAGONAL POSITION | | | |
|-------------------|-----|-------------------|--|--|--|
| 1/4 | 3/4 | | | | |
| | | | | | |
| | | | | | |
| | | | | | |

Mound of *stone* is located

Pits are located

Sketch markings of Bearing Trees (or Rocks) in proper box and fill blanks below, giving bearings from Corner to Trees and Distances in Links.

| | | | |
|-----------|-----------|--|--|
| <i>56</i> | <i>57</i> | | |
| <i>58</i> | <i>59</i> | | |

Species *White Oak*

Director

Bearing *N 57° W*

Distance *30*

Do you believe this to be a genuine Land Office Corner?

If not, why?

U.S. DEPARTMENT OF AGRICULTURE

FOREST SERVICE

NATIONAL FOREST

CORNERS OF THE PUBLIC SURVEY

Section of Township of ... Range of ... Mer.

Corner of Section ...

Corner of ...

Diagonal ...

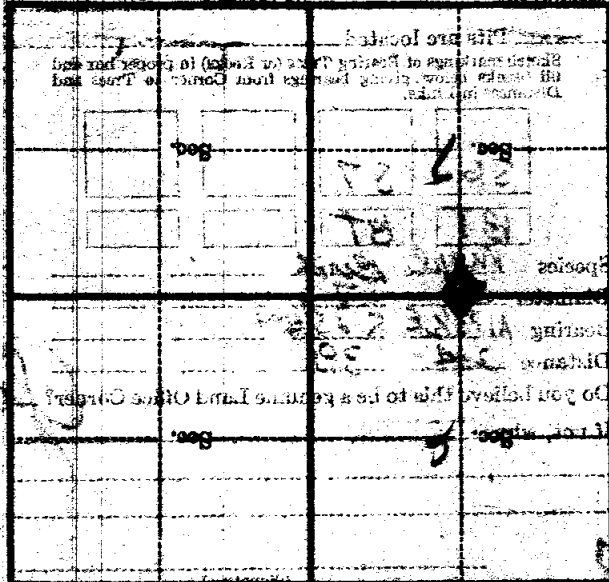
CARDINAL POSITION ...

from which this Corner bears

side of ...

tree inches diameter, on the

Model Location Point is on a



(Maple sketch of topography near Corner)

T. 12N R. 8W Mer.

U. S. Department of Agriculture
FOREST SERVICE

E-3

Chippewa NATIONAL FOREST
CORNERS OF THE PUBLIC SURVEY

T. 147N R. R7W 5th Mer.

4 Corner common to Sections

4, 6, and 7

Corner consists of a Iron Pipe (not) in place

State condition Just installed

Dimensions above ground 11" x 1" inches

Sketch grooves, letters, figures, or notches, on proper face or edge.

CARDINAL POSITION

DIAGONAL POSITION

| | | | |
|------------|-----------|--|--|
| <u>1/4</u> | <u>56</u> | | |
| | <u>37</u> | | |

N W S E

| | | | |
|---------------|--|--|--|
| <u>Marked</u> | | | |
|---------------|--|--|--|

NW SW SE NE

Mound of is located

Pits are located

Sketch markings of Bearing Trees (or Rocks) in proper box and fill blanks below, giving bearings from Corner to Trees and Distances in Links.

| | | | |
|-----------|------------|--|--|
| <u>56</u> | <u>5-7</u> | | |
| <u>BT</u> | <u>BT</u> | | |

Species Apple Birch

Diameter 8" 7"

Bearing N 85 1/2° E 25 1/4 W

Distance 24 38

Do you believe this to be a genuine Land Office Corner? Yes

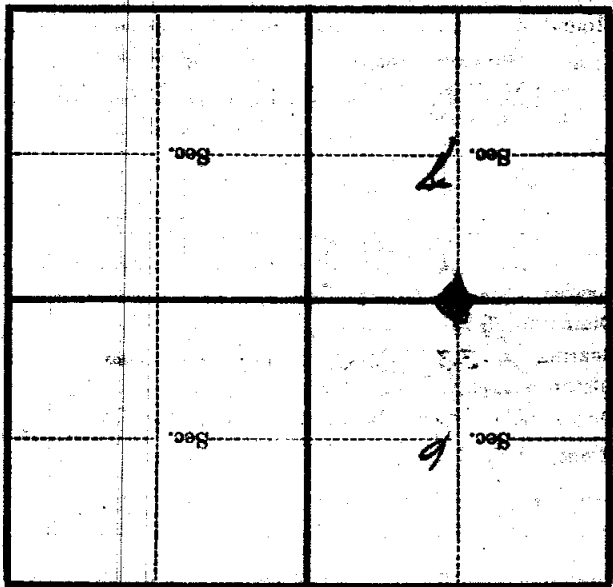
If not, why?

(Signature)

1936
(Date)

(Title)

Metal Location Poster is on a
 tree inches diameter, on the
 side of
 from which this Corner bears
 chains distant.
 Give any further facts which will aid in finding this
 Corner again.



(Make sketch of topography near Corner)

T. 147N R. 27W 57E Mer.

U. S. Department of Agriculture

FOREST SERVICE

Kippene NATIONAL FOREST

CORNERS OF THE PUBLIC SURVEY

T. *147N* R. *27W* *5th* Mer.

44 Corner common to Sections *6*, and *7*

Corner consists of a *Iron Pipe* (not) in place

State condition *Just Erected*

Dimensions above ground *11" — 29"* inches

Sketch grooves, letters, figures, or notches, on proper face or edge.

CARDINAL POSITION

DIAGONAL POSITION

| | | | |
|------------|-----------|--|--|
| <i>1/4</i> | <i>56</i> | | |
| | <i>57</i> | | |

| | | | |
|---------------|--|--|--|
| <i>Marked</i> | | | |
|---------------|--|--|--|

N W S E

NW SW SE NE

Mound of _____ is located _____

Pits are located _____

Sketch markings of Bearing Trees (or Rocks) in proper box and fill blanks below, giving bearings from Corner to Trees and Distances in Links.

| | | | |
|-----------|------------|--|--|
| <i>56</i> | <i>5-7</i> | | |
| <i>BT</i> | <i>BT</i> | | |

Species *Maple Birch*

Diameter *8"* *2"*

Bearing *N-33 1/2° E 25 1/4 W*

Distance *24* *38*

Do you believe this to be a genuine Land Office Corner? *Yes*

If not, why? _____

(Signature)

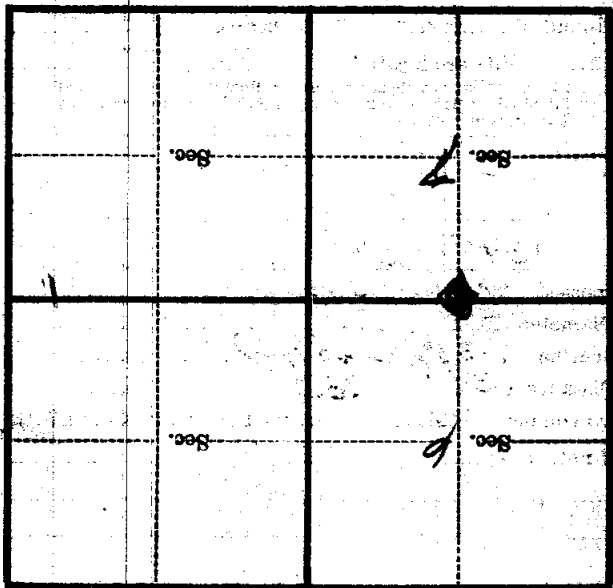
1936

(Date)

(Title)

Metal Location Poster is on a tree inches diameter, on the side of from which this Corner bears chains distant.

Give any further facts which will aid in finding this Corner again.



(Make sketch of topography near Corner)

T. 142N R. 27W 57th Mer.