

U. S. Department of Agriculture  
FOREST SERVICE

Chippewa NATIONAL FOREST N-1

CORNERS OF THE PUBLIC SURVEY

T. 147 R. 27 5<sup>th</sup> Mer.

Sec.

Corner common to Sections

13, 18, 24, and 19

Corner consists of a Con. Mon. ~~(not)~~ in place

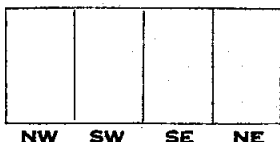
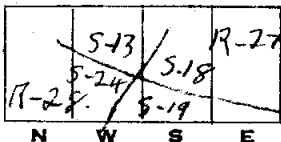
State condition new

Dimensions above ground 6" x 20" inches

Sketch grooves, letters, figures, or notches, on proper face or edge.

CARDINAL POSITION

DIAGONAL POSITION



Mound of \_\_\_\_\_ is located \_\_\_\_\_

Pits are located \_\_\_\_\_

Sketch markings of Bearing Trees (or Rocks) in proper box and fill blanks below, giving bearings from Corner to Trees and Distances in Links.

|       |
|-------|
| T-147 |
| R-27  |
| S-18  |

|       |
|-------|
| T-147 |
| R-27  |
| S-19  |

|       |
|-------|
| T-147 |
| S-24  |
| R-27  |

|      |
|------|
| R-27 |
| S-13 |

|      |
|------|
| B.T. |
|------|

|      |
|------|
| B.T. |
|------|

|      |
|------|
| B.T. |
|------|

|      |
|------|
| B.T. |
|------|

|          |               |               |               |               |
|----------|---------------|---------------|---------------|---------------|
| Species  | <u>Cedar</u>  | <u>Cedar</u>  | <u>Cedar</u>  | <u>Cedar</u>  |
| Diameter | <u>12"</u>    | <u>6"</u>     | <u>3"</u>     | <u>12"</u>    |
| Bearing  | <u>N-41°E</u> | <u>S-50°E</u> | <u>S-25°W</u> | <u>N-29°W</u> |
| Distance | <u>.34</u>    | <u>.58</u>    | <u>.30</u>    | <u>.34</u>    |

Do you believe this to be a genuine Land Office Corner? yes

If not, why? \_\_\_\_\_

(Signature)

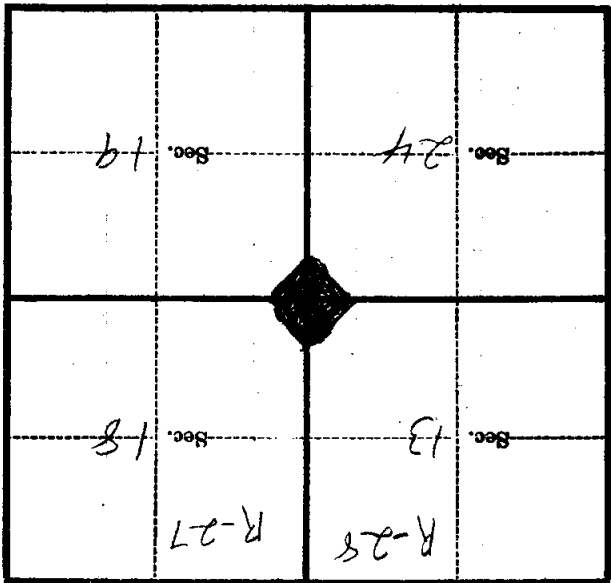
1.936

(Date)

(Title)

(Make sketch of topography near corner)

T. 147 R. 27 Mer. 525



Metal Location Poster is on a

tree inches diameter, on the

side of

from which this Corner bears

chains distant.

Give any further facts which will aid in finding this

Corner again.

Form 874-9—Revised May, 1918  
U. S. Department of Agriculture  
FOREST SERVICE

*NI*  
Posted

Chippewa NATIONAL FOREST

CORNERS OF THE PUBLIC SURVEY

T. 147 N R. 27 W Mer.

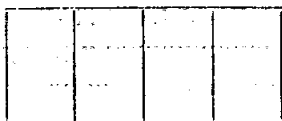
Section 10 Corner common to Sections  
10, 19, 13, and 24

Corner consists of a Squared stake (~~not~~) in place  
State condition Good

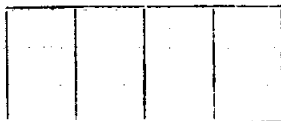
Dimensions above ground 36" high inches  
Sketch grooves, letters, figures, or notches, on proper face or edge.

CARDINAL POSITION

DIAGONAL POSITION



N W S E

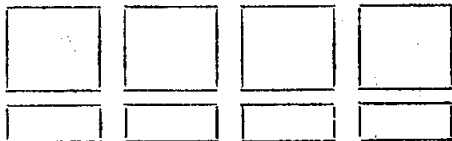


NW SW SE NE

Mound of \_\_\_\_\_ is located \_\_\_\_\_

Pits are located \_\_\_\_\_

Sketch markings of Bearing Trees (or Rocks) in proper box and fill blanks below, giving bearings from Corner to Trees and Distances in Links.



Species W. Cedar

Diameter 12"

Bearing N. 10° W.

Distance 16'

Do you believe this to be a genuine Land Office Corner? Yes

If not, why? \_\_\_\_\_

W. Barks  
(Signature)

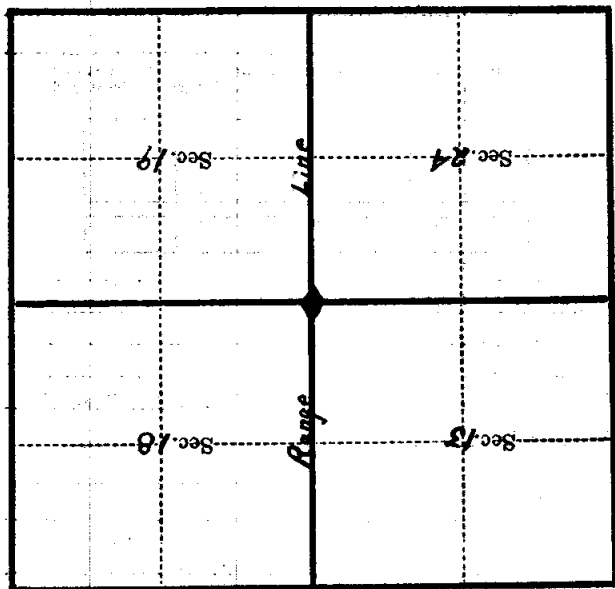
9/15/34  
(Date)

(Title)

Located in Cedar pole Swamp, 15chs. East of Third River Road - 9 chs. N of Pigeon River Road.

Corner again.

Metal Location Poster is on a tree ..... inches diameter, on the side of ..... from which this Corner bears ..... chains distant. Give any further facts which will aid in finding this



(Make sketch of topography near Corner)

T. 147 N. R. 27 + 28 W. Mer.

U. S. Department of Agriculture  
FOREST SERVICE

N-1

Chippewa NATIONAL FOREST

CORNERS OF THE PUBLIC SURVEY

T. 147 R. 27 5<sup>th</sup> Mer.

Sec.

Corner common to Sections

13, 18, 24, and 19

Corner consists of a Cong. Mon. in place

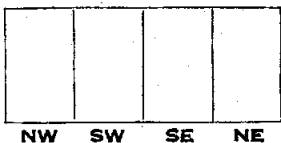
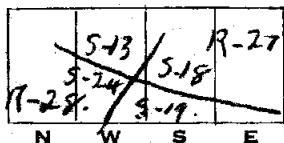
State condition new

Dimensions above ground 6" x 20" inches

Sketch grooves, letters, figures, or notches, on proper face or edge.

CARDINAL POSITION

DIAGONAL POSITION



Mound of \_\_\_\_\_ is located \_\_\_\_\_

Pits are located \_\_\_\_\_

Sketch markings of Bearing Trees (or Rocks) in proper box and fill blanks below, giving bearings from Corner to Trees and Distances in Links.

|        |
|--------|
| T. 147 |
| R. 27  |
| S. 19  |

|        |
|--------|
| T. 147 |
| R. 27  |
| S. 19  |

|        |
|--------|
| T. 147 |
| S. 24  |
| R. 28  |

|       |
|-------|
| R. 28 |
| S. 13 |

|       |
|-------|
| B. T. |
|-------|

|       |
|-------|
| B. T. |
|-------|

|       |
|-------|
| B. T. |
|-------|

|       |
|-------|
| B. T. |
|-------|

Species Cedar Cedar Cedar Cedar

Diameter 12" 6" 3" 12"

Bearing N. 41° E S. 50° E S. 25° W N. 29° W

Distance .34 .58 .30 .34

Do you believe this to be a genuine Land Office Corner? yes

If not, why? \_\_\_\_\_

(Signature)

1 936

(Date)

(Title)

Corner again.

Give any further facts which will aid in finding this

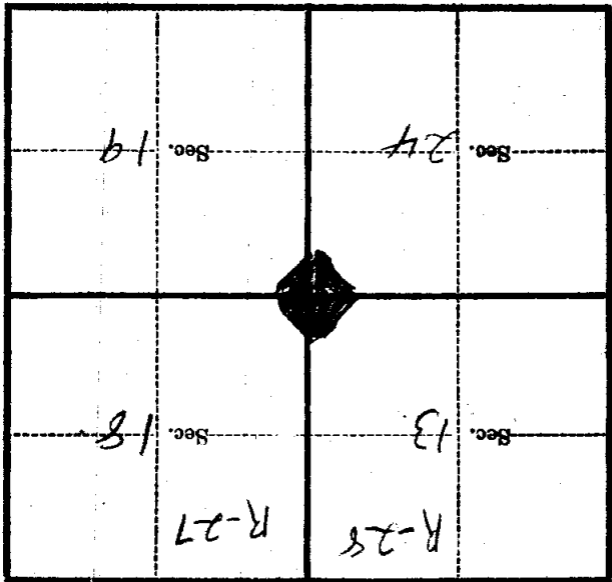
chains distant.

from which this Corner bears

side of

tree inches diameter, on the

Metal Location Poster is on a



(Make sketch of topography near Corner)

T. 147 R. 27 Mer. 525

U. S. Department of Agriculture  
FOREST SERVICE

N-1

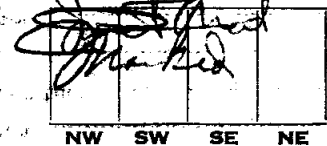
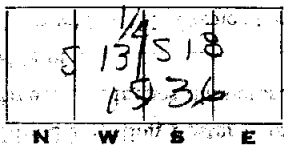
Chippewa NATIONAL FOREST  
CORNERS OF THE PUBLIC SURVEY

T. 147N R. R7W 5th—Mer.

1/4 Corner common to Sections  
13, and 18

Corner consists of a Iron Pipe (rod) in place  
State condition Just Enclosed

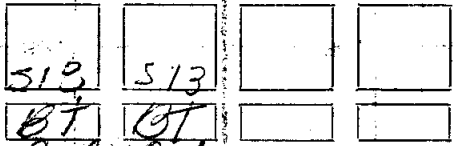
Dimensions above ground 2 1/2 inches  
Sketch grooves, letters, figures, or notches, on proper face or edge.



Mound of \_\_\_\_\_ is located \_\_\_\_\_

Pits are located \_\_\_\_\_

Sketch markings of Bearing Types (or Rocks) in proper box and fill blanks below, giving bearings from Corner to Trees and Distances in Links.



Species Cedar Cedar  
Diameter \_\_\_\_\_  
Bearing N 56 E 52 1/2 W  
Distance 15 63

Do you believe this to be a genuine Land Office Corner? Yes

If not, why? \_\_\_\_\_

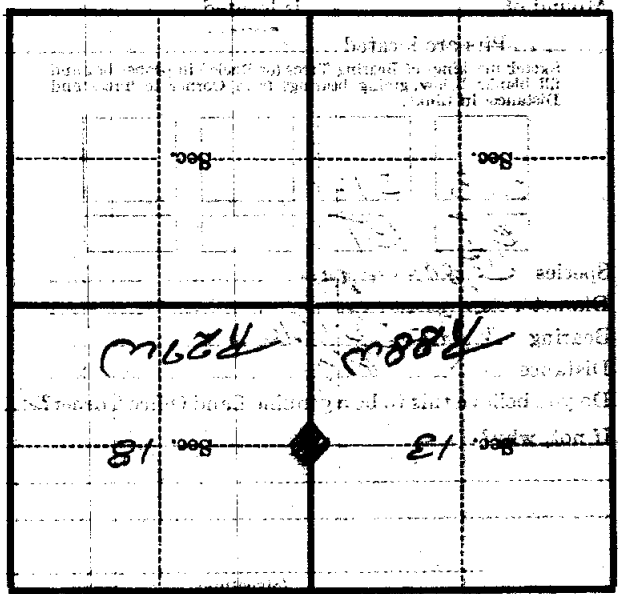
(Signature)

(Date)

(Title)

CORNERS OF THE PUBLIC LANDS

Metal Location Poster is on a tree inches diameter, on the side of from which this Corner bears chains distant. Give any further facts which will aid in finding the Corner again.



(Make sketch of topography near Corner)