

U. S. Department of Agriculture

FOREST SERVICE

posted
T25

CHIEF OF NATIONAL FOREST

CORNERS OF THE PUBLIC SURVEY

T. 177 R. 23 Mer. 5

Quartz Corner common to Sections 1, and _____

Corner consists of a odd post (not) in place

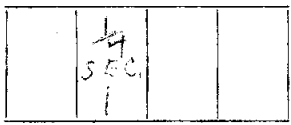
State condition Post in place

Dimensions above ground _____ inches.

Sketch grooves, letters, figures, or notches, on proper face or edge.

CARDINAL POSITION

DIAGONAL POSITION

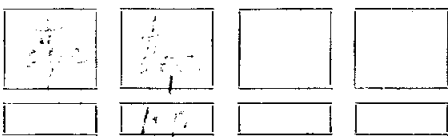


N W S E NW SW SE NE

Mound of _____ is located _____

Pits are located _____

Sketch markings of Bearing Trees (or Rocks) in proper box and fill blanks below, giving bearings from Corner to Trees and Distances in Links.



Species Juniper White Pine

Diameter 4" 10"

Bearing S 45° W N 75° W

Distance 60 LKS 70 LKS

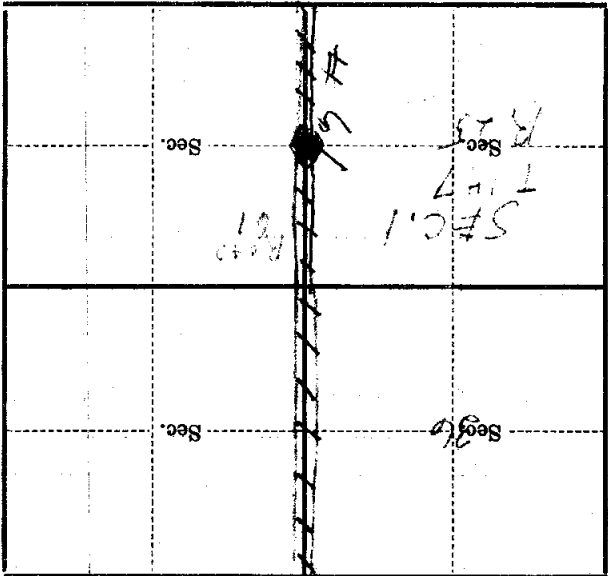
Do you believe this to be a genuine Land Office Corner? YES

If not, why? _____

(Signature)

(Date)

(Title)



(Make sketch of topography near Corner)

T. 147 R. 25 Mer. 5

Metal Location Poster is on a

tree inches diameter, on the

side of

from which this Corner bears

chains distant.

Give any further facts which will aid in finding this

Corner again.

19