

U. S. Department of Agriculture

FOREST SERVICE

V-17

Handwritten initials

Chippewa NATIONAL FOREST

CORNERS OF THE PUBLIC SURVEY

T. 146 R. 31 5th Mer.

Sec. 26, 27, 34, and 35 Corner common to Sections

Corner consists of a Brass in Concrete (not) in place
State condition good

Dimensions above ground 2 inches

Sketch grooves, letters, figures, or notches, on proper face or edge.

CARDINAL POSITION

DIAGONAL POSITION

N	W	S	E

NW	SW	SE	NE

Mound of is located

Pits are located

Sketch markings of Bearing Trees (or Rocks) in proper box and all blanks below, giving bearings from Corner to Trees and Distances in Links.

S. 26	S. 35	S. 24	S. 27
B. T.	B. T.	B. T.	B. T.

Species N.P. N.P. Ash Maple

Diameter 13" 17" 8" 4"

Bearing N. 25 1/2 E. S. 33 E. S. 78 W. N. 35 W.

Distance 35 1/2 lks 40 1/2 lks 23 lks 8 1/2 lks

Do you believe this to be a genuine Land Office Corner? Yes

If not, why?

Carl Steadland

3/15/35
(Date)

Jr. E. ...
(Title)

V-17

U. S. Department of Agriculture

FOREST SERVICE

NATIONAL FOREST

CORNERS OF THE PUBLIC SURVEY

T. ... R. ... M. ...

Corner common to sections

and

Corner consists of a ... (not in place)

Order again

Order condition

Give any further facts which will aid in finding this

location above ground

from which this corner bears

535 ft

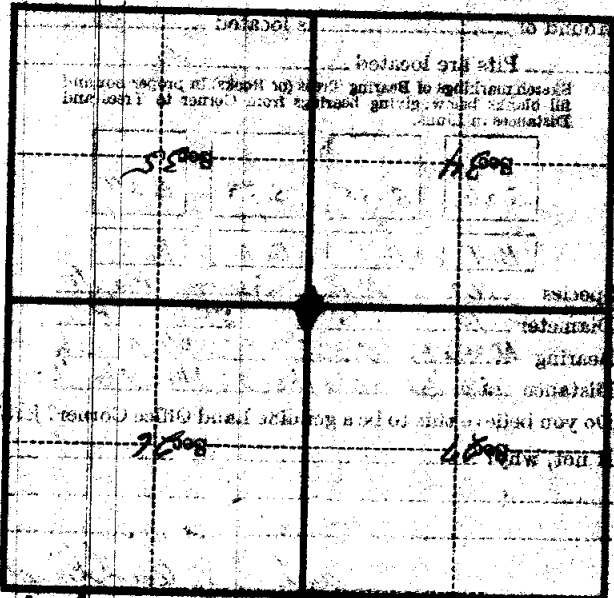
side of tree

tree 4 inches diameter, on the S.E.

Maple

Identical location found in on a

N W 2 E NW 26 NE



(Make sketch of topography near Corner)

V-17

J. ...

B

31