

U. S. Department of Agriculture
FOREST SERVICE

*Copied
Pasted
E-9
36*

Chippewa NATIONAL FOREST

CORNERS OF THE PUBLIC SURVEY

T. *146* R. *31* *5th* Mer.

Section Corner common to Sections

4, 5, 8, and 9

Corner consists of a *Y L O* (not) in place

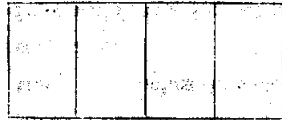
State condition *Good*

Dimensions above ground *2* inches

Sketch grooves, letters, figures, or notches, on proper face or edge.

CARDINAL POSITION

DIAGONAL POSITION



Mound of *is located*

Pits are located

Sketch markings of Bearing Trees (or Rocks) in proper box and fill blanks below, giving bearings from Corner to Trees and Distances in Links.

<i>T146</i>	<i>T146</i>	<i>T146</i>	<i>T146</i>
<i>R-31</i>	<i>R-31</i>	<i>R-31</i>	<i>R-31</i>
<i>S-9</i>	<i>S-8</i>	<i>S-5</i>	<i>S-4</i>
<i>BT</i>	<i>BT</i>	<i>BT</i>	<i>BT</i>

Species *N. Pine* *J. Pine* *J. Pine* *J. Pine*

Diameter *8"* *11"* *12"* *3"*

Bearing *S11E* *S36W* *N23W* *N43E*

Distance *400* *150* *400* *750*

Do you believe this to be a genuine Land Office Corner? *Yes*

If not, why?

Manly
(Signature)

4/10/38
(Date)

E-5
(Title)

Corner again.

Give any further facts which will aid in finding this
 chains distant.
 from which this Corner bears
 side of
 inches diameter, on the
 Metal Location Poster is on a

	Sec. 9	8	Sec. 8
7	Sec. 7	5	Sec. 5

(Make sketch of topography near Corner)

T. 176 R. 31
 S. A. Mer. E-9

E-9
 E-9

NATIONAL FOREST
 CORNERS OF THE PUBLIC SURVEY

T. 146 R. 31 Mer.

Section Corner common to Sections
8, 9, 5, and 4

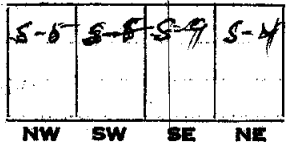
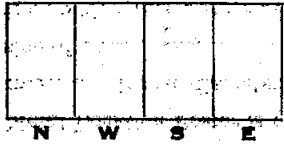
Corner consists of a Y. L. O. (not) in place
 State condition Good

Dimensions above ground 2" inches

Sketch grooves, letters, figures, or notches, on proper face or edge.

CARDINAL POSITION

DIAGONAL POSITION



Mound of _____ is located _____

Pits are located _____

Sketch markings of Bearing Trees (or Rocks) in proper box and fill blanks below, giving bearings from Corner to Tree and Distances in Links.

T 146
 R 31
 S-9

T 146
 R 31
 S-8

T 146
 R 31
 S-5

T 146
 R 31
 S-4

BT

BT

BT

BT

Species N.P. J.P. J.P. J.P.

Diameter 3" 11" 12" 5"

Bearing S 11 E S-36 W N-23 W N 43 E

Distance 40 ch 1.15 ch 40 ch 75 ch

Do you believe this to be a genuine Land Office Corner? Yes

If not, why? _____

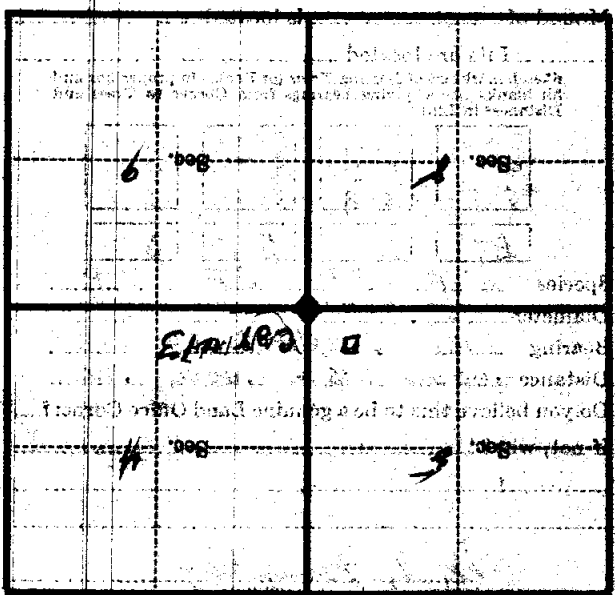
M. J. Murphy

4/10/1938
(Signature)

CORNERS OF THE PUBLIC SURVEY

Metal Location Poster is on a _____ inches diameter, on the _____ side of _____ from which this Corner bears _____ chains distant.

Give any further facts which will aid in finding this Corner again.



(Make sketch of topography near Corners)