

U. S. Department of Agriculture
FOREST SERVICE

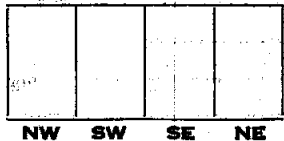
G-9

Ch. P. NATIONAL FOREST
CORNERS OF THE PUBLIC SURVEY

T. 146 R. 31 S. 5 Mer.
~~14~~ ~~Section~~ Corner common to Sections
8, 9, ~~10, 11~~

Corner consists of a _____ (not) in place
State condition _____

Dimensions above ground _____ inches
Sketch grooves, letters, figures, or notches, on proper face or edge.
CARDINAL POSITION DIAGONAL POSITION



Mound of _____ is located _____

Pits are located _____

Sketch markings of Bearing Trees (or Rocks) in proper box and fill blanks below, giving bearings from Corner to Trees and Distances in Links.

	T. 146 R. 31 S. 8	T. 146 R. 31 S. 8	
	B.T.	B.T.	

Species Jack S. Oak
Diameter 8 1/2"
Bearing S. 19° W S. 40° W
Distance 2.11 ch. 1.46 ch

Do you believe this to be a genuine Land Office Corner? _____

If not, why? Yes

Bob Gill
(Signature)

3/20/15
(Date)

(Title)

G-9

U. S. Geological Survey

Geological Survey

NATIONAL FOREST

CORNERS OF THE PUBLIC SURVEY

Section _____ Township _____ Range _____

Corner marked by a _____

Corner again: _____

Give any further facts which will aid in finding this

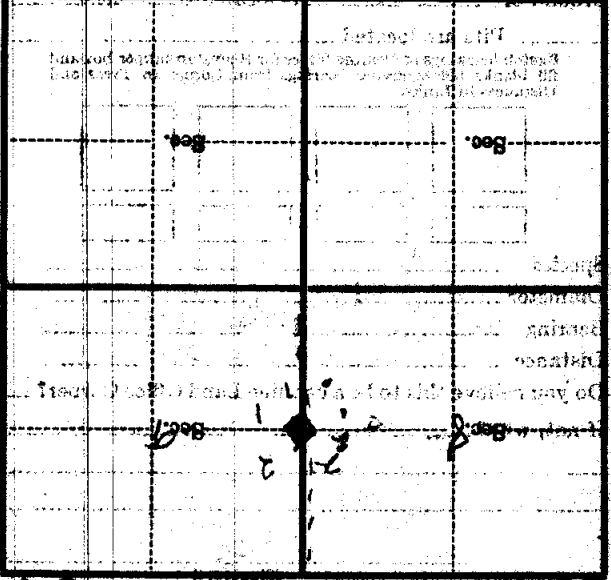
chain distant _____

from which this Corner bears _____

side of _____

tree _____ inches diameter, on the _____

Metal Location Poster is on a _____



(Make sketch of topography near Corner)

U. S. Department of Agriculture
FOREST SERVICE

157
36
69

Chepewa NATIONAL FOREST

CORNERS OF THE PUBLIC SURVEY

T. 14 6 R. 31 54 Mer.

1/21 Corner common to Sections 8, and 9

Corner consists of a ✓ (not) in place
State condition ✓

Dimensions above ground ✓ inches

Sketch grooves, letters, figures, or notches, on proper face or edge.

CARDINAL POSITION

DIAGONAL POSITION

N W S E

NW SW SE NE

Mound of is located

Pits are located

Sketch markings of Bearing Trees (or Rocks) in proper box and fill blanks below, giving bearings from Corner to Trees and Distances in Links.

T. 14
R. 31
S. 8

T. 14
R. 31
S. 8

BT

BT

Species J.P. Oak

Diameter 14" 8"

Bearing S 19° W S 40° W

Distance 2.11 ch 1.4 ch

Do you believe this to be a genuine Land Office Corner? ✓

If not, why?

Maill
(Signature)

3/20/35
(Date)

G-0
(Title)

U. S. Department of Agriculture

FOREST SERVICE

NATIONAL FOREST

CORNERS OF THE PUBLIC SURVEY

T. 11 N. R. 31 E.

CORNER COMMON TO SECTIONS

10 & 11

Corner consists of a (not in place) Corner again

State corner

Give any further facts which will aid in finding this

Dimensions above shown

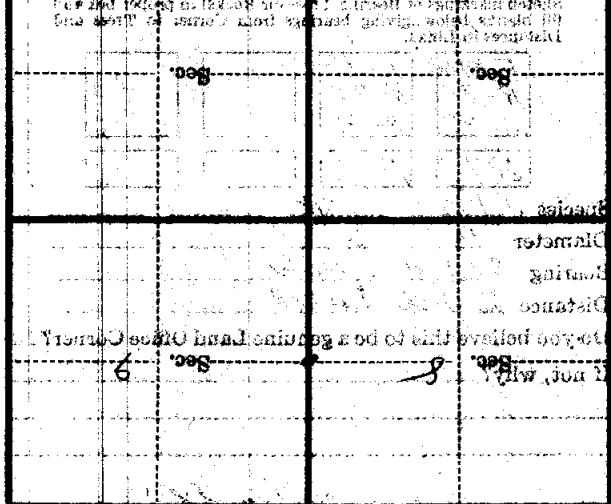
from which this corner bears

side of

tree inches diameter, on the

Metal Location Poster is on a

N W S E NW SW SE NE



(Make sketch of topography near Corner)

T. 11 N. R. 31 E. 31