

*Copied
Posted*

U. S. Department of Agriculture
FOREST SERVICE

6-363⁵/₃₄

Chippewa NATIONAL FOREST

CORNERS OF THE PUBLIC SURVEY

T. *146* R. *31* *5th* Mer.

4 Corner common to Sections

7

Corner consists of a *9 1/2* (not) in place

State condition *Good*

Dimensions above ground *6* inches

Sketch grooves, letters, figures, or notches, on proper face or edge.

CARDINAL POSITION

DIAGONAL POSITION

N	W	S	E

NW	SW	SE	NE

Mound of _____ is located _____

Pits are located _____

Sketch markings of Bearing Trees (or Rocks) in proper box and fill blanks below, giving bearings from Corner to Trees and Distances in Links.

<i>e 1/4</i>	<i>e 1/4</i>		
<i>S-7</i>	<i>S-7</i>		
<i>BT</i>	<i>BT</i>		

Species *N. Pine ASPEN*

Diameter *5"* *7"*

Bearing *S 79 W* *N 68 E*

Distance *74 ch* *15 ch*

Do you believe this to be a genuine Land Office Corner? *Yes*

If not, why? _____

Dunphy
(Signature)

4/11/38
(Date)

(Title)

G-3

Corner again.

Give any further facts which will aid in finding this

chain distant.

from which this Corner bears *N 68 E*
side of *W. ...*
tree *4*" inches diameter, on the *N E*
Metal Location Poster is on a *Post*

	Sec.		Sec.
	Sec.		Sec. 7

(Make sketch of topography near Corner)

NET

R. 31

T. 176

U. S. Department of Agriculture

FOREST SERVICE

G-3

NATIONAL FOREST

CORNERS OF THE PUBLIC SURVEY

T. 46 R. 31 Mer.

CEN. Quarter Corner common to Section 7

Corner consists of a 1 1/2" Cap (and) in place

State condition Good

Dimensions above ground 6" inches

Sketch grooves, letters, figures, or notches, on proper face or edge.

CARDINAL POSITION

DIAGONAL POSITION

N	W	S	E

NW	SW	SE	NE

Mound of _____ is located _____

Pits are located _____

Sketch markings of Bearing Trees (or Rocks) in proper box and fill blanks below, giving bearings from Corner to Trees and Distances in Links.

E 44
S-7

E 44
S-7

BT

BT

Species K.P. ASPTD

Diameter 5" 7"

Bearing W 11 S E 22 N

Distance 74 ch 15 ch

Do you believe this to be a genuine Land Office Corner? _____

If not, why? _____

M. J. Murphy

4/14/18

G-3

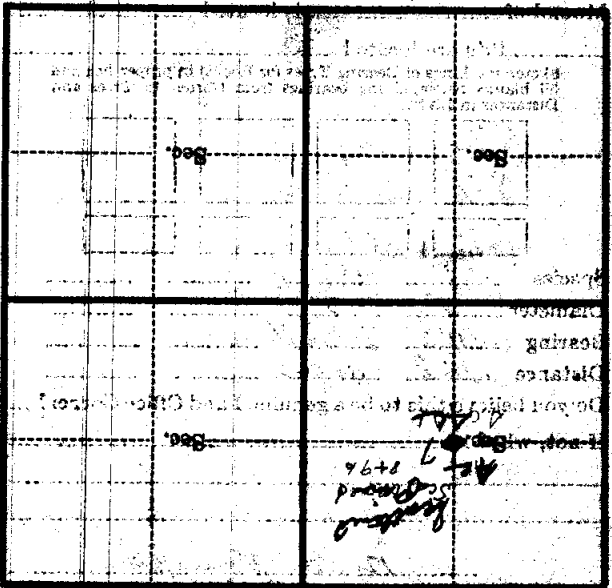
G-3

CORNERS OF THE PUBLIC SURVEY

Corner of [unclear] [unclear]

Give any further facts which will aid in finding this corner.

From which this corner bears *from N 68 E* side of *line* 2 inches diameter, on the *NE* Metal Location Poster is on a *post*



Sketch of topography near corner

G-3