

J-3

U. S. Department of Agriculture

FOREST SERVICE

J-3

NATIONAL FOREST

CORNERS OF THE PUBLIC SURVEY

T. 146 R. 31 Mer.

Corner common to Sections 7 and 18

Corner consists of a [handwritten] (not) in place

State condition [handwritten]

Dimensions above ground 6 inches

Sketch grooves, letters, figures, or notches, on proper face or edge.

CARDINAL POSITION

DIAGONAL POSITION

N	W	S	E

		1/4	1/4
		S-18	S-7
NW	SW	SE	NE

Mound of [handwritten] is located

Pits are located

Sketch markings of Bearing Trees (or Rocks) in proper box and fill blanks below, giving bearings from Corner to Trees and Distances in Links.

1/4 S-7	1/4 S-18		
BT	BT		

Species WOOD WOOD

Diameter 6" 6"

Bearing N21'E S40'E

Distance 67 ch 268 ch

Do you believe this to be a genuine Land Office Corner?

If not, why?

M. J. Murphy

U.S. Department of Agriculture

FOREST SERVICE

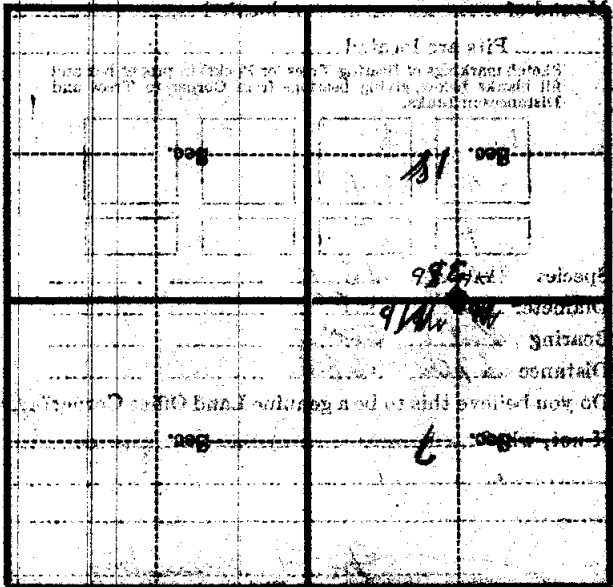
CORNERS OF THE PUBLIC SURVEY

NATIONAL FOREST

*Handwritten notes and signatures, including "Corner of..." and "Metal Location Poster is on a..."*

...any further facts which will aid in finding this  
...chain district.

from which this Corner bears *E 40 N.*  
side of *by lot 17+18*  
feet *9* inches diameter, on the *N.E.*  
Metal Location Poster is on a *15/16" x 1/2"*



Form 874-9—Revised May, 1918  
U. S. Department of Agriculture  
FOREST SERVICE

Copied  
Pasted  
J-3  
9/3/18  
J3

*Chippewa* NATIONAL FOREST  
CORNERS OF THE PUBLIC SURVEY

T. *146* R. *31* *5<sup>th</sup>* Mer.

*1/4* Corner common to Sections

*7*, and *18*

Corner consists of a *1/2" x 1/2" (not)* in place

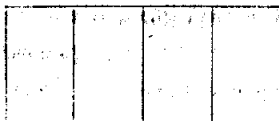
State condition *Good*

Dimensions above ground *6* inches

Sketch grooves, letters, figures, or notches, on proper face or edge.

CARDINAL POSITION

DIAGONAL POSITION



N W S E

NW SW SE NE

Mound of \_\_\_\_\_ is located \_\_\_\_\_

Pits are located \_\_\_\_\_

Sketch markings of Bearing Trees (or Rocks) in proper box and fill blanks below, giving bearings from Corner to Trees and Distances in Links.

*1/4*  
*S-7*

*1/4*  
*S-18*



*BT*

*BT*



Species *W. Oak W. Oak*

Diameter *6" 6"*

Bearing *N 21 E S 40 E*

Distance *67ch 68ch*

Do you believe this to be a genuine Land Office Corner? *Yes*

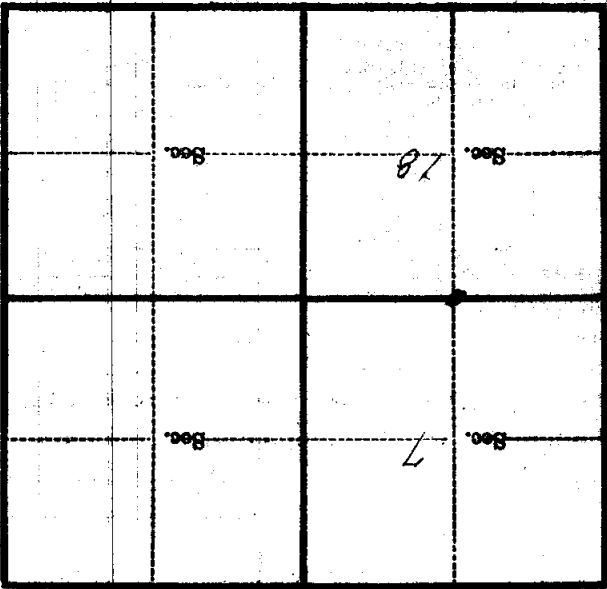
If not, why? \_\_\_\_\_

*[Signature]*  
(Signature)

*4/11/38*  
(Date)

(Title)

J-3



(Make sketch of topography near Corner)

T. 146 R. 31 S. 41 Mer. J. 3

Metal Location Poster is on a *Redwood* tree 9 inches diameter, on the *N E* side of *18* from which this Corner bears *N 50 E* 28 chains distant.  
 Give any further facts which will aid in finding this Corner again.