

U. S. Department of Agriculture

FOREST SERVICE

P
5/32

D-1 D1

Chuffman NATIONAL FOREST

CORNERS OF THE PUBLIC SURVEY

T. 146 R. 31-32 5th Mer.

S 26 Corner common to Sections
_____, _____, 6, and 1

Corner consists of a N 20 (not) in place

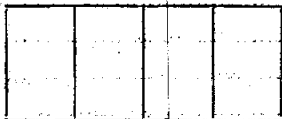
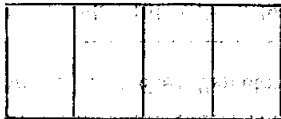
State condition Good

Dimensions above ground 6 inches

Sketch grooves, letters, figures, or notches, on proper face or edge.

CARDINAL POSITION

DIAGONAL POSITION



Mound of _____ is located _____

Pits are located _____

Sketch markings of Bearing Trees (or Rocks) in proper box and fill blanks below, giving bearings from Corner to Trees and Distances in Links.

T 146
R - 32
S - 1

T 146
R - 31
S - 6



BT

BT



Species Birch Oak

Diameter 7 7

Bearing N 50 W S 82 E

Distance 360 1100

Do you believe this to be a genuine Land Office Corner? Yes

If not, why? _____

J. Murphy
(Signature)

4/10/38
(Date)

(Title)

D-1

UNITED STATES GEOLOGICAL SURVEY

WATER RESOURCES DIVISION

Corner again.
 to show mouth of
 directed towards
 bottom of river ground
 mouth east of corner

Give any further facts which will aid in finding this

chains distant

from which this Corner bears

N 50 W

side of

tree 7 inches diameter, on the

Metal Location Poster is on a

<p>Sec.</p>	<p>Sec.</p>	<p>Sec.</p>	<p>Sec.</p>
<p>6</p>	<p>A 4</p>	<p>3 4</p>	<p>Sec.</p>

(Make sketch of topography near Corner)

T. 127 E R. 31
 D-1

Form 874-B—Revised May, 1918
 U. S. Department of Agriculture
 FOREST SERVICE

D-1
 0-1

NATIONAL FOREST
 CORNERS OF THE PUBLIC SURVEY

T. 146 R. 37-32 Mer.

S 1/4 Corner common to Sections

6, and 1

Corner consists of a 1/2" x 1/2" Cap (not) in place

State condition Good

Dimensions above ground 6" inches

Sketch grooves, letters, figures, or notches, on proper face or edge.

CARDINAL POSITION

DIAGONAL POSITION

N	W	S	E

S 1/4	S 1/4		
NW	SW	SE	NE

Mound of _____ is located _____

Pits are located _____

Sketch markings of Bearing Trees (or Rocks) in proper box and fill blanks below, giving bearings from Corner to Tree and Distances in Links.

F146
 R-32
 S-1

T146
 R 31
 Sec 6

BT

BT

Species Birch Oak

Diameter 7" 7"

Bearing W 1/2 N E 8 S

Distance 36 chs 110 chs

Do you believe this to be a genuine Land Office Corner? Yes

If not, why? _____

M. J. Murphy
 (Signature)

1/14/23
 (Date)

D-1
 0-1

COMMISSION OF THE FEDERAL BUREAU OF INVESTIGATION

Handwritten: I have a few items to report
Corner of [illegible] & [illegible]

Give any further facts which will aid in finding this

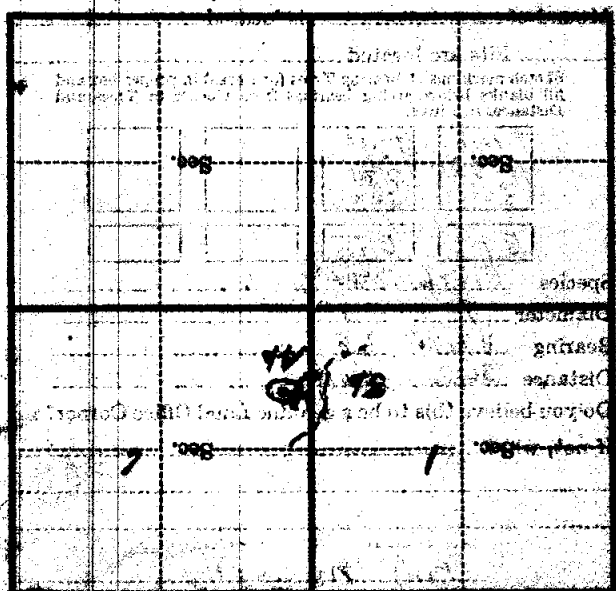
from which this Corner bears

Handwritten: W. N. N.

side of [illegible] inches diameter, on the

Handwritten: Pitch

Metal Location Poster is on a



(State sketch of topography near Corner)