

U. S. Department of Agriculture  
FOREST SERVICE

P  
J-21 36

Chippewa NATIONAL FOREST

CORNERS OF THE PUBLIC SURVEY

T. 146 R. 30 5<sup>th</sup> Mer.

Section Corner common to Sections  
11, 12, 13, and 14

Corner consists of a 4.50 (not) in place  
State condition

Dimensions above ground 6' inches

Sketch grooves, letters, figures, or notches, on proper face or edge.

CARDINAL POSITION

DIAGONAL POSITION



N W S E



NW SW SE NE

Mound of \_\_\_\_\_ is located \_\_\_\_\_

Pits are located \_\_\_\_\_

Sketch markings of Bearing Trees (or Rocks) in proper box and fill blanks below, giving bearings from Corner to Trees and Distances in Links.

T 146  
R 30  
S - 12

T 146  
R - 30  
S - 13

T 146  
R - 30  
S - 14

T 146  
R - 30  
S - 11

BT

BT

BT

BT

Species N. Pine Birch Aspen T. Pine

Diameter 14" 12" 12" 14"

Bearing N 25 E S - 75 E S - 65 W N - 65 W

Distance 66' 110' 90" 85'

Do you believe this to be a genuine Land Office Corner? Yes

If not, why? \_\_\_\_\_

Munshy  
(Signature)

12/6/34  
(Date)

(Title)

J-21

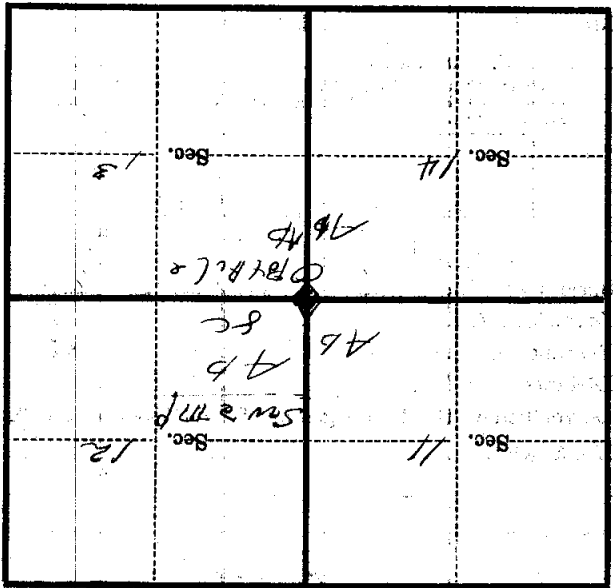
Corner again.

Give any further facts which will aid in finding this

chains distant.

from which this Corner bears

side of *Johnson's* *11-14*  
tree 12" inches diameter, on the *North* *line*  
Metal Location Poster is on a *AS 1105*



(Make sketch of topography near Corner)

T. 116 R. 30  
Mer. 11-21

U. S. Department of Agriculture

FOREST SERVICE

J-21

Chippewa NATIONAL FOREST

CORNERS OF THE PUBLIC SURVEY

T. 146 R. 30 Mer.

Section Corner common to Sections

11, 12, 13, and 14

Corner consists of a St. P. & O. (not) in place

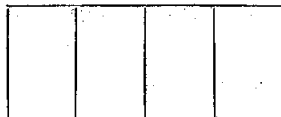
State condition \_\_\_\_\_

Dimensions above ground 6" inches

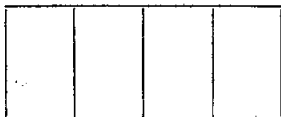
Sketch grooves, letters, figures, or notches, on proper face or edge.

CARDINAL POSITION

DIAGONAL POSITION



N W S E



NW SW SE NE

Mound of \_\_\_\_\_ is located \_\_\_\_\_

Pits are located \_\_\_\_\_

Sketch markings of Bearing Trees (or Rocks) in proper box and fill blanks below, giving bearings from Corner to Trees and Distances in Links.

146-30  
8-12

146-30  
8-13

146-30  
8-14

146-30  
8-11

BT

BT

BT

BT

Species N.P. Birch Aspen J.P.

Diameter 12" 10" 12" 14"

Bearing N 25° E E 15° S N 25° S N 25° W

Distance 66' 110' 90' 85'

Do you believe this to be a genuine Land Office Corner? Yes

If not, why? \_\_\_\_\_

M. F. Murphy  
(Signature)

12/6/34  
(Date)

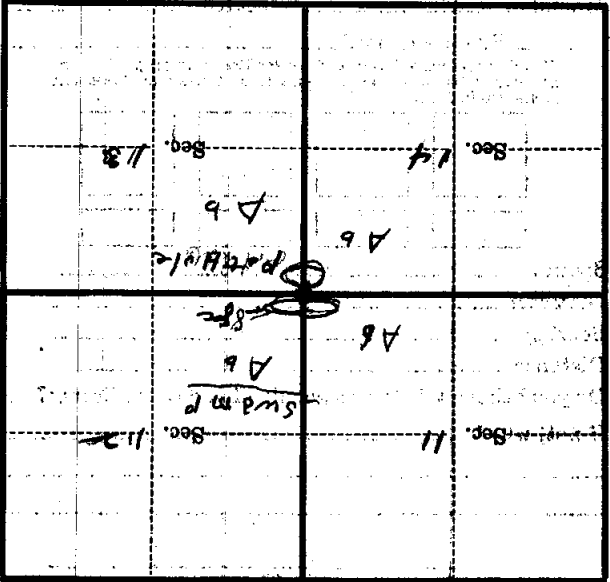
(Title)

J-21

CORNER  
 1930

Corner again.  
 Give any further facts which will aid in finding this  
 chains distant.

Metal Location Poster is on a ASP 02  
 tree 12 inches diameter, on the ~~side of~~ *side of*  
 from which this Corner bears *W. N. 1/4*  
 Give any further facts which will aid in finding this



(Make sketch of topography near Corner)