

U. S. Department of Agriculture
FOREST SERVICE

F-6

NATIONAL FOREST

CORNERS OF THE PUBLIC SURVEY

T. 16 R. 30 Mer.

Corner common to Sections

and

Corner consists of a stone (not) in place

State condition good

Dimensions above ground 5 inches

Sketch grooves, letters, figures, or notches, on proper face or edge.

CARDINAL POSITION

DIAGONAL POSITION

| | | | |
|----------|----------|-----------|-----------|
| <u>W</u> | <u>5</u> | <u>16</u> | <u>30</u> |
|----------|----------|-----------|-----------|

N W S E

| | | | |
|------------|------------|------------|------------|
| <u>AP4</u> | <u>AP1</u> | <u>AP5</u> | <u>AP6</u> |
|------------|------------|------------|------------|

NW SW SE NE

Mound of stone is located at

Pits are located at

Sketch markings of Bearing Trees (or Rocks) in proper box and fill blanks below, giving bearings from Corner to Trees and Distances in Links.

| | | | |
|------------|-----------|--|--|
| <u>700</u> | <u>BT</u> | | |
| | | | |

Species

Diameter

Bearing

Distance

Do you believe this to be a genuine Land Office Corner?

If not, why?

(Signature)

(Date)

(Title)

F-6

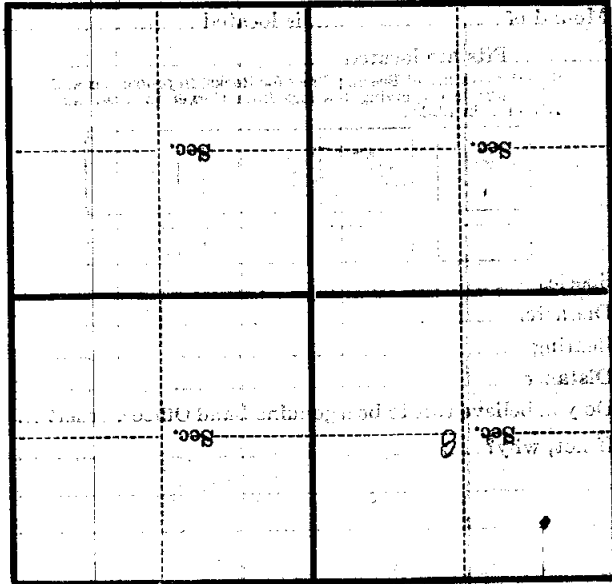
NATIONAL FOREST
CORNERS OF THE PUBLIC SURVEY

W. L. Bass
Corner again

Give any further facts which will aid in finding this
corner again.

from which this corner bears
side of *Corner*

tree *16* inches diameter, on the *West*
Metal Location Poster is on a *Bass Wood*



(Make sketch of topography near corner)

F-6
Met. *F-6*
T. 14th R. 30