

U. S. Department of Agriculture
FOREST SERVICE

~~Chippewa~~ NATIONAL FOREST

CORNERS OF THE PUBLIC SURVEY

T. 146N R. 29W 6th Mer.

Marrier Corner common to Sections

23, and 26

Corner consists of a metal cap (not) in place

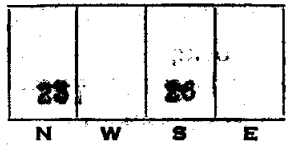
State condition good

Dimensions above ground 6 inches

Sketch grooves, letters, figures, or notches, on proper face or edge.

CARDINAL POSITION

DIAGONAL POSITION



Mound of _____ is located _____

Pits are located _____

Sketch markings of Bearing Trees (or Rocks) in proper box and fill blanks below, giving bearings from Corner to Trees and Distances in Links.

T. 146N
R. 29W
S. 23

--

T. 146N
R. 29W
S. 26

--

M.C.

--

M.C.

--

Species Elm Elm

Diameter 20" 12"

Bearing N 64W S 57W

Distance 2.56 ch. 165 ch.

Do you believe this to be a genuine Land Office Corner? yes

If not, why? _____

Harold Hennes

(Signature)

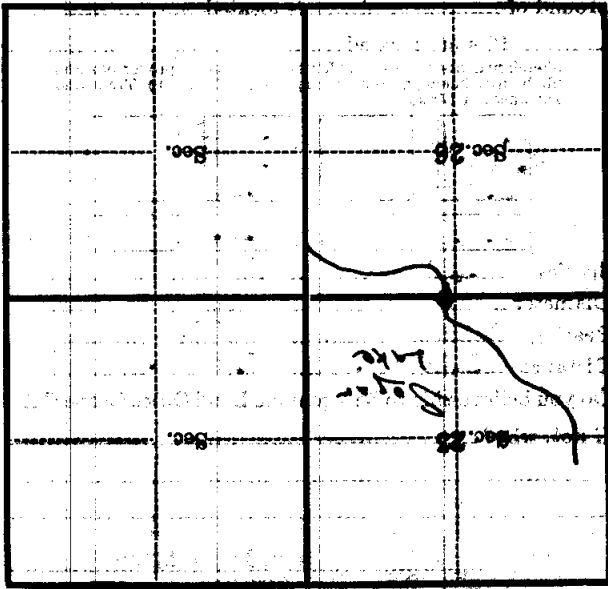
March 20, 1937

(Date)

(Title)

SECTION 25
 T. 146 R. 29
 CORNER
 GIVE ANY FURTHER FACTS WHICH WILL AID IN FINDING THIS CORNER AGAIN.

Metal Location Poster is on a tree 12 inches diameter, on the East side of tree from which this Corner bears 1.78 chains distant.



(Make sketch of topography near Corner)

U. S. Department of Agriculture
FOREST SERVICE

Chippewa NATIONAL FOREST

CORNERS OF THE PUBLIC SURVEY

T. 146N R. 29W 5th Mer.

Meander Corner common to Sections

....., 23, and 26

Corner consists of a metal cap (not) in place

State condition good

Dimensions above ground 6 inches

Sketch grooves, letters, figures, or notches, on proper face or edge.

CARDINAL POSITION

DIAGONAL POSITION

23		26	
----	--	----	--

N W S E

--	--	--	--

NW SW SE NE

Mound of is located

Pits are located

Sketch markings of Bearing Trees (or Rocks) in proper box and fill blanks below, giving bearings from Corner to Trees and Distances in Links.

T. 146N
R. 29W
S. 23

T. 146N
R. 29W
S. 26

M.C.:

M.C.:

Species Elm Elm

Diameter 20" 12"

Bearing N 64W S 57W

Distance 2.36 ch. 165 ch.

Do you believe this to be a genuine Land Office Corner? Yes

If not, why?

Harold Hennes

March 29, 1937

(Signature)

(Date)

(Title)

Corner again.

Give any further facts which will aid in finding this

1.78

from which this Corner bears

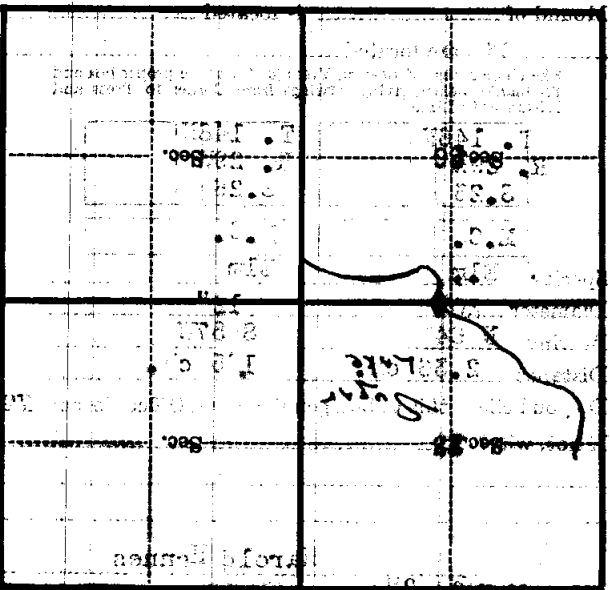
side of

feet 21

inches diameter, on the East

Metal Location Poster is on a

3 89 W



(Make sketch of topography near Corner)