

W-5

Form 874-9—Revised May, 1918

U. S. Department of Agriculture
FOREST SERVICE

~~Chipewa~~ NATIONAL FOREST

CORNERS OF THE PUBLIC SURVEY

T. 146 R. 29 Sth Mer.

N 1/16 Corner common to Sections
31, and 32

Corner consists of a Brass Cap (not) in place
State condition good

Dimensions above ground 6 inches

Sketch grooves, letters, figures, or notches, on proper face or edge.

CARDINAL POSITION

DIAGONAL POSITION

	31		32
N	W	S	E

NW	SW	SE	NE

Mound of _____ is located _____

Pits are located _____

Sketch markings of Bearing Trees (or Rocks) in proper box and fill blanks below, giving bearings from Corner to Trees and Distances in Links.

N 1/16		N 1/16	
S. 31		S. 32	

B.T.		B.T.	
-------------	--	-------------	--

Species J.P. J.P.

Diameter 1 1/2" 1 1/2"

Bearing N 14 W S 22 E

Distance 90 lks 81 lks

Do you believe this to be a genuine Land Office Corner? yes

If not, why? _____

Harold Homes
(Signature)

April 5, 1937
(Date)

(Title)

W-5

Corner again.

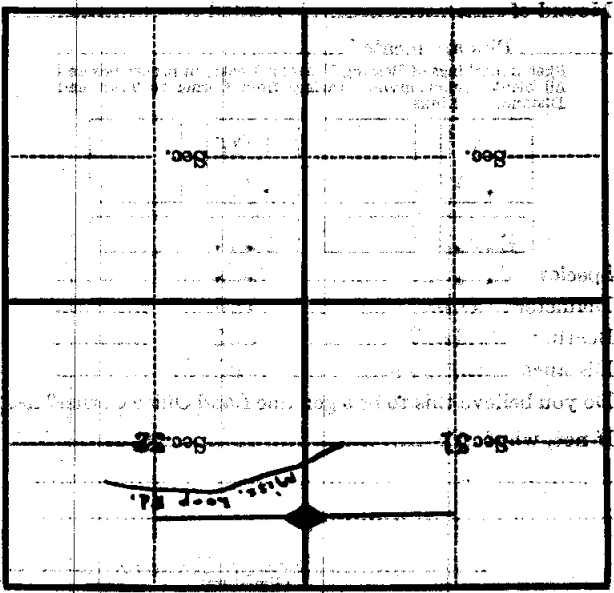
Give any further facts which will aid in finding this chains distant.

from which this Corner bears

side of

tree inches diameter, on the

Metal Location Poster is on a



(Make sketch of topography near Corner)

W-5

Form 874-9--Revised May, 1918

U. S. Department of Agriculture

FOREST SERVICE

Chippewa NATIONAL FOREST

CORNERS OF THE PUBLIC SURVEY

T. 146 R. 29 5th Mer.

N 1/16

Corner common to Sections

31, and 32

Corner consists of a Brass Cap (not) in place

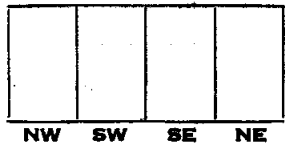
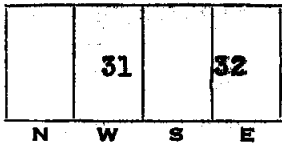
State condition good

Dimensions above ground 6 inches

Sketch grooves, letters, figures, or notches, on proper face or edge.

CARDINAL POSITION

DIAGONAL POSITION



Mound of is located

Pits are located

Sketch markings of Bearing Trees (or Rocks) in proper box and fill blanks below, giving bearings from Corner to Trees and Distances in Links.



Species J.P. J.P.

Diameter 12" 11"

Bearing N 14 W S 22 E

Distance 90 lks 81 lks

Do you believe this to be a genuine Land Office Corner? yes

If not, why?

Harold Hermes

(Signature)

April 5, 1937

(Date)

(Title)

Section 16, Township 14 N., Range 10 W., T. 14 N., R. 10 W., S. 1

Corner of Section 16, Township 14 N., Range 10 W., T. 14 N., R. 10 W., S. 1

Corner of Section 16, Township 14 N., Range 10 W., T. 14 N., R. 10 W., S. 1

Corner of Section 16, Township 14 N., Range 10 W., T. 14 N., R. 10 W., S. 1

Corner of Section 16, Township 14 N., Range 10 W., T. 14 N., R. 10 W., S. 1

Corner of Section 16, Township 14 N., Range 10 W., T. 14 N., R. 10 W., S. 1

Corner of Section 16, Township 14 N., Range 10 W., T. 14 N., R. 10 W., S. 1

Corner again:

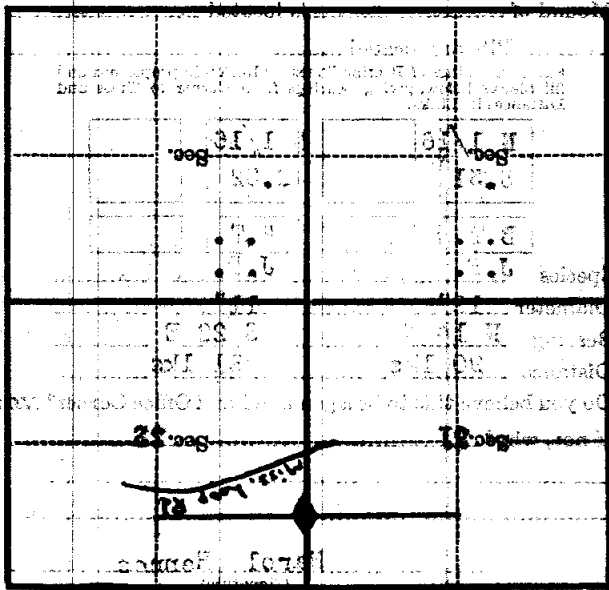
Give any further facts which will aid in finding this

corner distant

from which this Corner bears

tree inches diameter, on the side of 21 25

Metal Location Poster is on a



(Make sketch of topography near Corner)