

U. S. DEPARTMENT OF AGRICULTURE
FOREST SERVICE

posted

Chippewa NATIONAL FOREST

CORNERS OF THE PUBLIC SURVEY

T. 146 N R. 29 W-30 W 5th Mer.

1/4 Corner common to Sections
19, 24, and _____

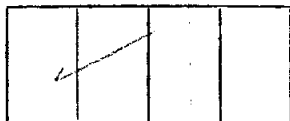
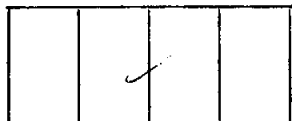
Corner consists of a _____ (not) in place
State condition _____

Dimensions above ground _____ inches.

Sketch grooves, letters, figures, or notches, on proper face or edge.

CARDINAL POSITION

DIAGONAL POSITION



N W S E NW SW SE NE

Mound of _____ is located _____

Pits are located _____

Sketch markings of Bearing Trees (or Rocks) in proper box and fill blanks below, giving bearings from Corner to Trees and Distances in Links.

$\frac{1}{4}$ S	S		
B.T.	B.T.		

Species White Oak (d) W. Oak

Diameter 14" 18"

Bearing ✓ ✓

Distance ✓ ✓

Do you believe this to be a genuine Land Office Corner? yes

If not, why? _____

E. H. J. [Signature]

Signature.

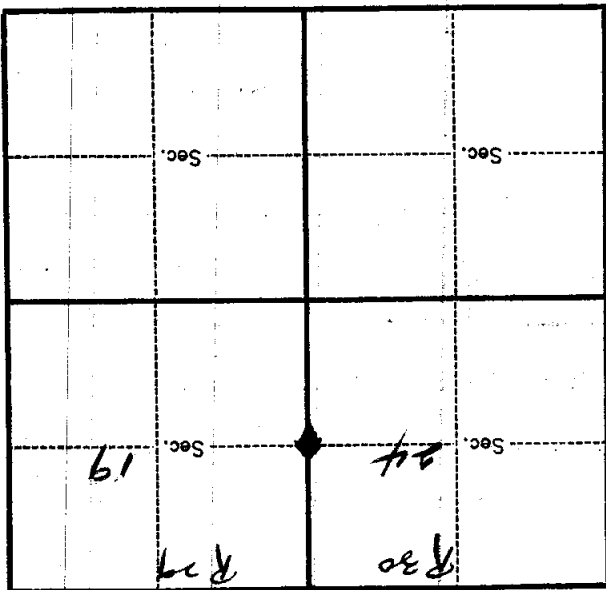
7/6/31
Date.

Chippewa
Title.

T. 146 N. R. 29 W. - 30 W. Mer.

8-3027

(Make sketch of topography near corner.)



Metal Location Poster is on a white oak

tree 18 inches diameter, on the W

side of tree

from which this Corner bears

chains distant.

Give any further facts which will aid in finding this

Corner again.

One bearing from on

back side of distance

look north of 11 rods

corner about 220 rods north

of bearing.

U. S. Department of Agriculture
FOREST SERVICE

Chippewa NATIONAL FOREST

CORNERS OF THE PUBLIC SURVEY

T. 146 N R. 29-30 W 5th Mer.
Quarter Corner common to Sections

19, and 24

Corner consists of a Located in road (not) in place
State condition

Dimensions above ground _____ inches
Sketch grooves, letters, figures, or notches, on proper face or edge.
CARDINAL POSITION DIAGONAL POSITION

	24		19
N	W	S	E

NW	SW	SE	NE

Mound of _____ is located

Pits are located

Sketch markings of Bearing Trees (or Rocks) in proper box and fill blanks below, giving bearings from Corner to Trees and Distances in Links.

$\frac{1}{4}$		$\frac{1}{4}$	
S.24		S.19	
B.T.		B.T.	

Species Ash Ash
Diameter 20" 6"
Bearing S36W N68E
Distance 58 lks 36 lks

Do you believe this to be a genuine Land Office Corner? Yes
If not, why?

Harold Hennes

Mar. 31, 1937

(Date)

(Title)

Give any further facts which will aid in finding this corner again.

from which this corner bears

side of

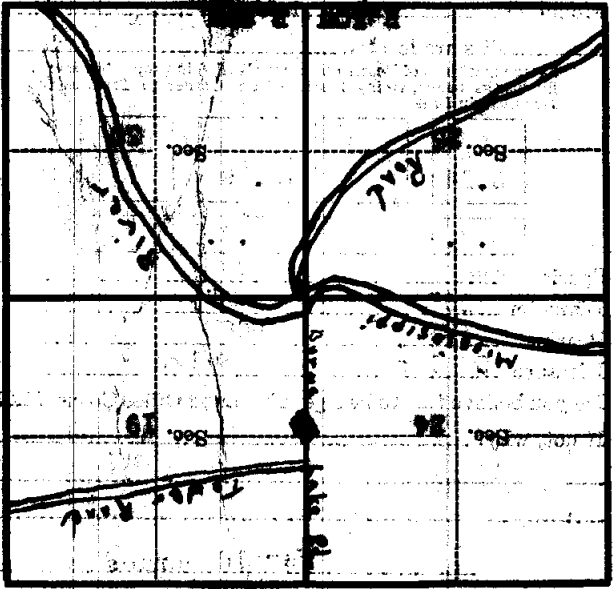
tree inches diameter, on the

Metal Location Poster is on a

observed distant

Corner again.

Give any further facts which will aid in finding this



(Make sketch of topography near Corner)

Form 874-B—Revised May, 1918
U. S. Department of Agriculture
FOREST SERVICE

Publ *copies*
Posted
5/36

NATIONAL FOREST
CORNERS OF THE PUBLIC SURVEY

T. 146 R. 29 30 5 Mer.

Corner common to Sections
18, 19, 13, and 24

Corner consists of a 4" oak stake properly scribed

State condition

Dimensions above ground _____ inches

Sketch grooves, letters, figures, or notches, on proper face or edge.

CARDINAL POSITION

DIAGONAL POSITION

--	--	--	--

N W S E

--	--	--	--

NW SW SE NE

Mound of _____ is located _____

Pits are located _____

Sketch markings of Bearing Trees (or Rocks) in proper box and fill blanks below, giving bearings from Corner to Trees and Distances in Links.

Species _____

Diameter _____

Bearing _____

Distance _____

Do you believe this to be a genuine Land Office Corner? _____

If not, why? _____

(Signature)

(Date)

(Title)

Publ

see 24

6" white oak 25 paces W of corner on sec 18

6" poplar 20 paces W of corner on sec 18

see 18

22" white oak 25 paces N of corner on

Corner again.

Give any further facts which will aid in finding this

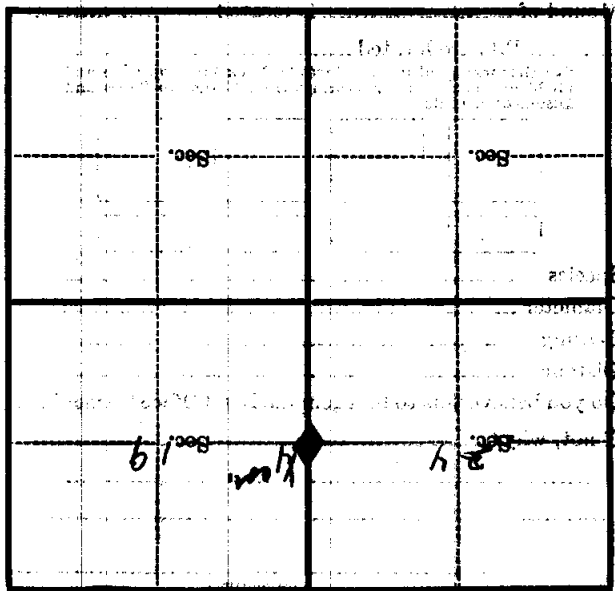
chain distant.

from which this Corner bears

side of

tree inches diameter, on the

Metal Location Poster is on a



(Make sketch of topography near Corner)

M.P. 1

R.

T.

Form 874-0—Revised May, 1925
U. S. Department of Agriculture
FOREST SERVICE

Chippewa NATIONAL FOREST

CORNERS OF THE PUBLIC SURVEY

T. 148 N R. 20-30 W 5th Mer.

Quarter

Corner common to Sections

19, and 24

Corner consists of a Located in rock (not) in place

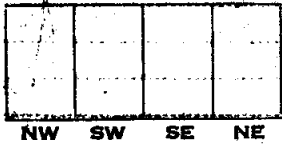
State condition

Dimensions above ground _____ inches

Sketch grooves, letters, figures, or notches, on proper face or edge.

CARDINAL POSITION

DIAGONAL POSITION



Mound of _____ is located _____

Pits are located _____

Sketch markings of Bearing Trees (or Rocks) in proper box and fill blanks below, giving bearings from Corner to Trees and Distances in Links.



B.T.

B.T.

Species Ash _____ Ash _____

Diameter 30" _____ 9" _____

Bearing S30W _____ N60E _____

Distance 58 lks _____ 56 lks _____

Do you believe this to be a genuine Land Office Corner? Yes

If not, why? _____

Harold Hennes

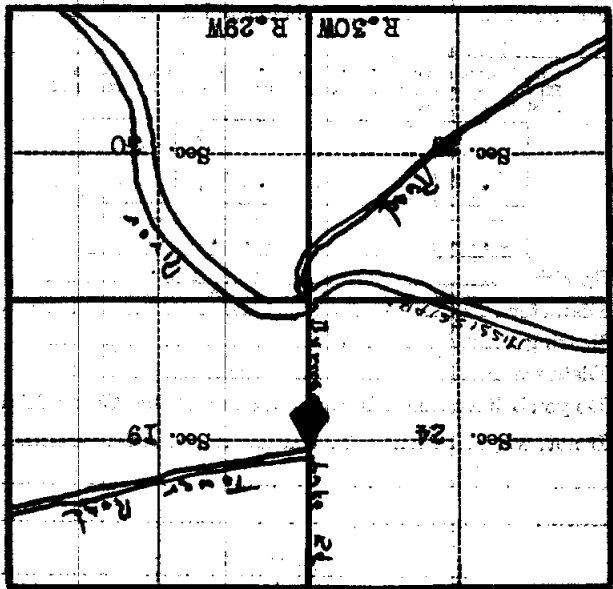
Mar. 31, 1937 (Signature)

(Date)

(Title)

Corner again.
Temp $\frac{1}{2}$ cor. 24/19 along side,
west side of road.

Metal Location Poster is on a
tree inches diameter, on the
side of
from which this Corner bears
chains distant
Give any further facts which will aid in finding this



(Make sketch of topography near Corner)