

U. S. DEPARTMENT OF AGRICULTURE

FOREST SERVICE

Posted A-1 of 146 26

Chippewa NATIONAL FOREST

CORNERS OF THE PUBLIC SURVEY

T. 146 + 147 N. R. 26 + 27 W. 5 p. Mer.

Corner common to Sections

36, 31, 1, and 6

Corner consists of a *square Birch post* (not) in place

State condition *Replacement not required*

Dimensions above ground _____ inches.

Sketch grooves, letters, figures, or notches, on proper face or edge.

CARDINAL POSITION

DIAGONAL POSITION



N W S E

NW SW SE NE

Mound of _____ is located _____

Pits are located _____

Sketch markings of Bearing Trees (or Rocks) in proper box and fill blanks below, giving bearings from Corner to Trees and Distances in Links.

All 4 stubs

T. 147 N
R. 27 W
S. 36

T. 147 N
R. 26 W
S. 31

T. 146 N
R. 26 W
S. 6

T. 146 N
R. 27 W
S. 1

B. T.

B. T.

B. T.

B. T.

Species *N. pin.* *N. pin.* *N. pin.* *N. pin.*

Diameter 15" 13" 11" 10"

Bearing N. 52° W. N. 52° E. S. 25° E. S. 40° W.

Distance 22' 15' 10' 8'

Do you believe this to be a genuine Land Office Corner? *Yes.*

If not, why? *No question - all original bearing trees in. Original corner itself lost*

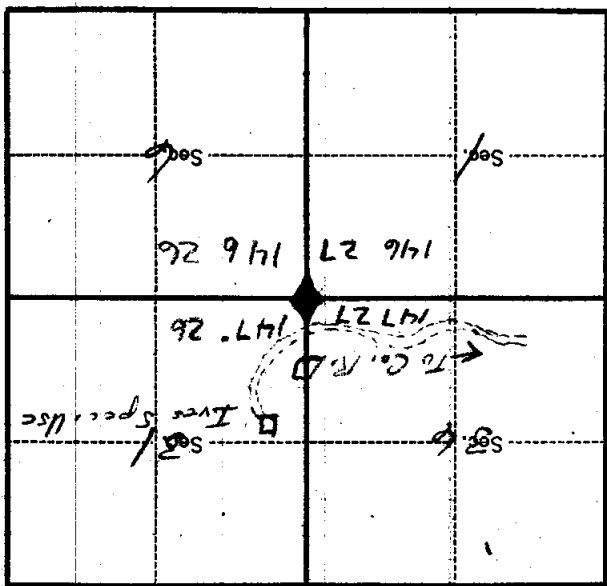
Gerald Horton

Signature.

11/10/33
Date.

Forest Ranger
Title.

(Make sketch of topography near corner.)



Metal Location Poster is on a

tree inches diameter, on the

side of

from which this Corner bears

chains distant.

Give any further facts which will aid in finding this

Corner again.

Line between 36 + 31 crosses

road from Co. Road D. to Ives

Spec. Use about 6 chns. west

of Ives Spec. Use