

U. S. Department of Agriculture
FOREST SERVICE

Chippewa NATIONAL FOREST

CORNERS OF THE PUBLIC SURVEY

T. 146N R. R6W 5th Mer.

Section

Corner common to Sections

12, 13, 7, and 19

Corner consists of a wood post () in place

State condition Fair

Dimensions above ground 2 1/2' x 1 1/2' inches

Sketch grooves, letters, figures, or notches, on proper face or edge.

CARDINAL POSITION

DIAGONAL POSITION

--	--	--	--

S 12	S 13	S 18	S 19 146N R6W
---------	---------	---------	------------------------

N W S E

NW SW SE NE

Mound of _____ is located _____

Pits are located _____

Sketch markings of Bearing Trees (or Rocks) in proper box and fill blanks below, giving bearings from Corner to Trees and Distances in Links.

T146N
R26W
S7

T146N
R26W
S18

T146N
R27W
S13

B.T.

B.T.

B.T.

Species *taxus* *strob* *taxus* *strob*

Diameter 6" 4" 4"

Bearing N53°E S37°E S12°W

Distance 207 20 23

Do you believe this to be a genuine Land Office Corner? *yes*

If not, why? _____

Walter Habala

(Signature)

10/17/31
(Date)

Reader
(Title)

U. S. Department of Agriculture

FOREST SERVICE

SECTIONAL FOREST

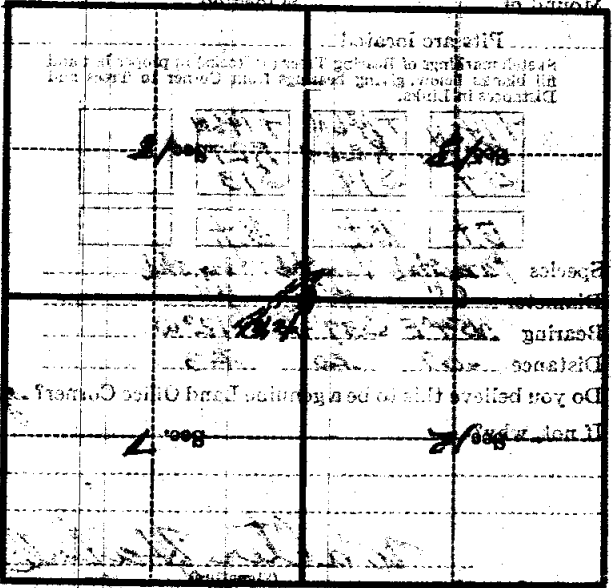
CORNERS OF THE PUBLIC SURVEY

T. L. M. R. 26-20
Section

and
Corner of the Public Survey

Diagonal Position
Sketch showing location of corner on public land of
District and quarter section which it is in

13 MARKS
from which this corner bears
side of corner
tree 4 inches diameter, on the S. W. corner
Metal Location Poster is on a



U. S. Department of Agriculture
FOREST SERVICE

~~Handwritten scribble~~
5-1

Chippewa NATIONAL FOREST

CORNERS OF THE PUBLIC SURVEY

T. 146 R. 26 Mer. ⁵⁻⁷⁵

Section Corner common to Sections

12, 13, 7, and 18

Corner consists of a wood stake (not) in place

State condition Fair

Dimensions above ground 2" x 2" x 1 1/4" inches

Sketch grooves, letters, figures, or notches, on proper face or edge.

CARDINAL POSITION

DIAGONAL POSITION

--	--	--	--

5 12	5 13	5 18	5 7 + 1/4 BELOW
---------	---------	---------	--------------------------

N W S E

NW SW SE NE

Mound of _____ is located _____

Pits are located _____

Sketch markings of Bearing Trees (or Rocks) in proper box and fill blanks below, giving bearings from Corner to Trees and Distances in Links.

<u>T146</u> <u>R26</u> <u>57</u>	<u>T146</u> <u>R26</u> <u>518</u>	<u>T146</u> <u>R26</u> <u>513</u>	
<u>BT</u>	<u>BT</u>	<u>BT</u>	

Species to stake to stake to stake

Diameter 1 1/2 1 1/2 4

Bearing N54E S31 1/2 E S12W

Distance 07 20 23

Do you believe this to be a genuine Land Office Corner? yes

If not, why? _____

Walter Habel

(Signature)

10/17/38

(Date)

Forester

(Title)

REPORT OF INVESTIGATION

NO. 1000

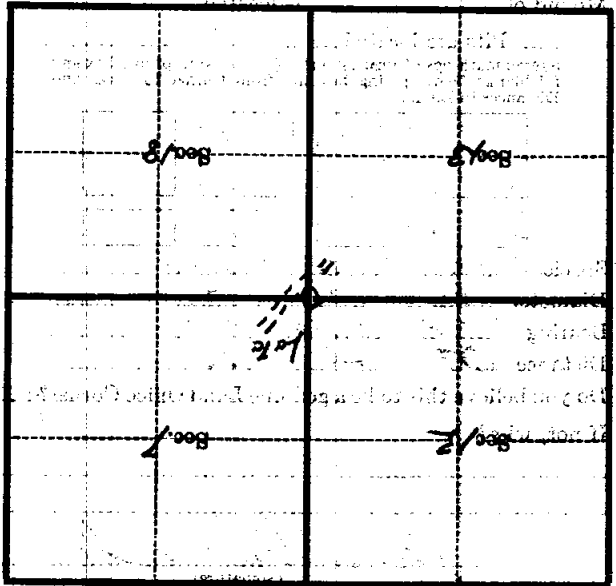
CORNERS OF THE FIELD

Corner of N. 1/2 Sec. 12, T. 14 N., R. 2 E., S. 7 T.

Give any further facts which will aid in finding this corner distant from which this corner bears S 12° W side of corner

tree 4 inches diameter, on the S West

Metal Location Poster is on a tree on S West



(Make sketch of topography near corner)

U. S. Department of Agriculture
FOREST SERVICE

J-1

Chippewa NATIONAL FOREST

CORNERS OF THE PUBLIC SURVEY

T. 176 R. 26 5th Mer.

Section Corner common to Sections

12, 13, 7, and 18

Corner consists of a wood post (set) in place

State condition F217

Dimensions above ground 2' x 2' x 16" inches

Sketch grooves, letters, figures, or notches, on proper face or edge.

CARDINAL POSITION

DIAGONAL POSITION

N W S E

S	S	S	S
12	13	18	7
			F146
			PR26

NW SW SE NE

Mound of _____ is located _____

Pits are located _____

Sketch markings of Bearing Trees (or Rocks) in proper box and fill blanks below, giving bearings from Corner to Trees and Distances in Links.

F146
PR26
S7

F146
PR26
S18

F146
PR27
S13

B.t.

B.t.

B.t.

Species *tern. stub. tern.* *tern. stub.*

Diameter 6" 4" 4"

Bearing N59°E S37½E S12°W

Distance .07 .20 .23

Do you believe this to be a genuine Land Office Corner? *yes*

If not, why? _____

Walter Gahle

(Signature)

10/17/24

(Date)

Leater

(Title)

PHIPPS NATIONAL FOREST

CORNERS OF THE PUBLIC ROAD

T. 12 N. R. 5 E. S. 18

Section 18

12 18 18

Corner of N. 1/2 Sec. 18

Corner of

Diagonal line from corner to center of section

Distance from corner to center of section

Distance from corner to center of section

from which this corner bears

S. 125° 2'

side of

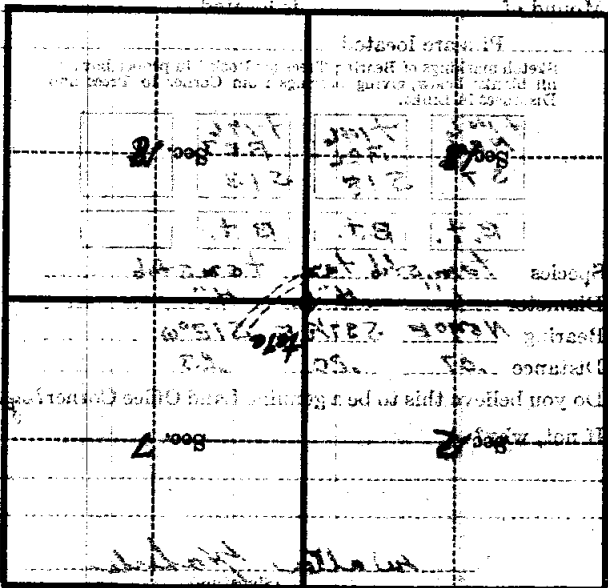
CORNER

tree 4 inches diameter, on the

S. West

Metal Location Poster is on a

Distance from corner to center of section



Scale sketch of topography (see corner)

Met.

5-74

R. 5-20

T. 12 N.