

U. S. Department of Agriculture

FOREST SERVICE

*posted*  
*V-17*

*California* NATIONAL FOREST

CORNERS OF THE PUBLIC SURVEY

T. *146* R. *25* S. Mer.

Corner common to Sections

*27, 26, 34, and 35*

Corner consists of a \_\_\_\_\_ (not) in place  
State condition \_\_\_\_\_

Dimensions above ground \_\_\_\_\_ inches.

Sketch grooves, letters, figures, or notches, on proper face or edge.

CARDINAL POSITION

DIAGONAL POSITION

N	W	S	E

NW	SW	SE	NE

Mound of \_\_\_\_\_ is located \_\_\_\_\_

Pits are located \_\_\_\_\_

Sketch markings of Bearing Trees (or Rocks) in proper box and fill blanks below, giving bearings from Corner to Trees and Distances in Links.

		<i>SLC</i>	
		<i>27</i>	
		<i>BJ</i>	

Species *Bal* \_\_\_\_\_

Diameter *12"* \_\_\_\_\_

Bearing *N 45* \_\_\_\_\_

Distance *1/2 c* \_\_\_\_\_

Do you believe this to be a genuine Land Office Corner? \_\_\_\_\_

If not, why? *Road Survey* \_\_\_\_\_

*W. F. Maddy*

(Signature)

*12/7/33*

(Date)

*Estuary*

(Title)

Corner again.

Give any further facts which will aid in finding this

chains distant.

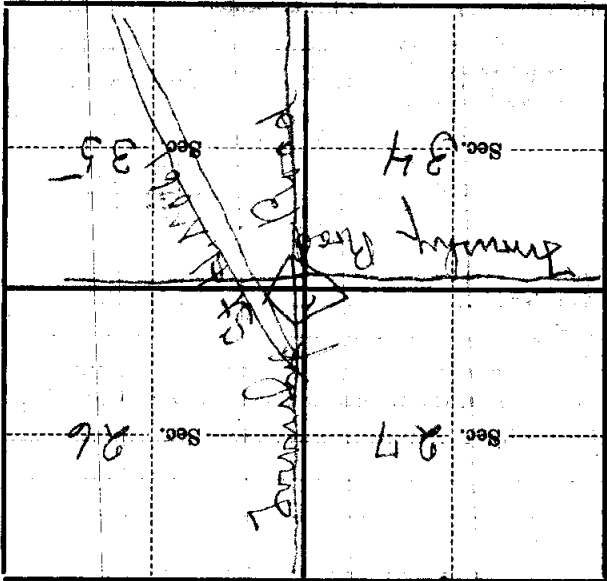
from which this Corner bears

side of *and the N S & Road*

tree 14 inches diameter, on the

Metal Location Poster is on a

*SE*



(Make sketch of topography near Corner)

T. 146 R. 25 Mer.