

U. S. Department of Agriculture

FOREST SERVICE

posted N-13

*Chippewa* NATIONAL FOREST

CORNERS OF THE PUBLIC SURVEY

T. 146 R. 25 S. Mer.

Corner common to Sections

16, 15, 21, and 22

Corner consists of a (not) in place

State condition

Dimensions above ground inches.

Sketch grooves, letters, figures, or notches, on proper face or edge.

CARDINAL POSITION

DIAGONAL POSITION

--	--	--	--

N W S E

--	--	--	--

NW SW SE NE

Mound of is located

Pits are located

Sketch markings of Bearing Trees (or Rocks) in proper box and fill blanks below, giving bearings from Corner to Trees and Distances in Links.

Sec 21			
BT			

Species *Larwick*

Diameter *104*

Bearing *SW*

Distance *1/2*

Do you believe this to be a genuine Land Office Corner?

If not, why? *Read Summary*

*W. P. Maddy*

(Signature)

*12/4/38*

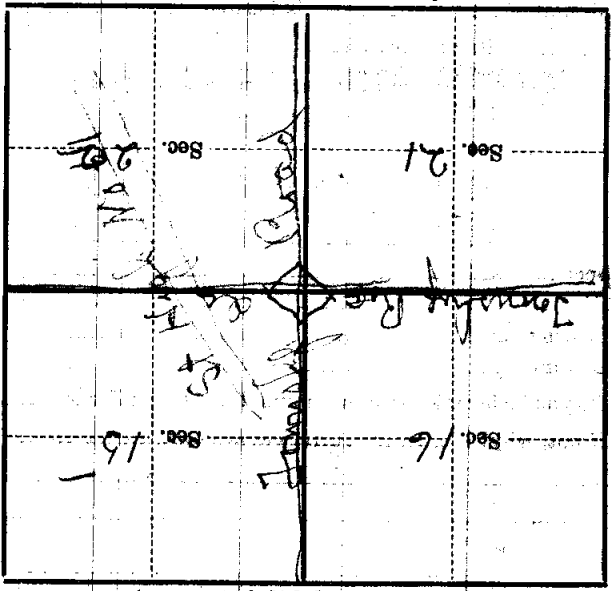
(Date)

*Forest Ranger*

(Title)

Metal Location Poster is on a tree \_\_\_\_\_ inches diameter, on the \_\_\_\_\_ side of \_\_\_\_\_ from which this Corner bears \_\_\_\_\_ chains distant.

Give any further facts which will aid in finding this Corner again.



(Make sketch of topography near Corner)

T. 146 R. 25 2 Mer.