

Form 874-9—Revised May, 1918  
U. S. Department of Agriculture  
FOREST SERVICE

*Copied  
Posted  
5/36  
L25*

NATIONAL FOREST

CORNERS OF THE PUBLIC SURVEY

T. 145 R. 31 30 5 Mer.

<sup>14</sup>  
13 Corner common to Sections 18, and

Corner consists of a (not) in place  
State condition

Dimensions above ground inches

Sketch grooves, letters, figures, or notches, on proper face or edge.

CARDINAL POSITION

DIAGONAL POSITION

--	--	--	--

N W S E

--	--	--	--

NW SW SE NE

Mound of is located

Pits are located

Sketch markings of Bearing Trees (or Rocks) in proper box and fill blanks below, giving bearings from Corner to Trees and Distances in Links.


Species

Diameter

Bearing

Distance

Do you believe this to be a genuine Land Office Corner? \_\_\_\_\_

If not, why? \_\_\_\_\_

(Signature)

(Date)

(Title)

UNITED STATES DEPARTMENT OF THE INTERIOR

BUREAU OF LAND MANAGEMENT

SECTION 18

18

Corner again:

Give any further facts which will aid in finding this

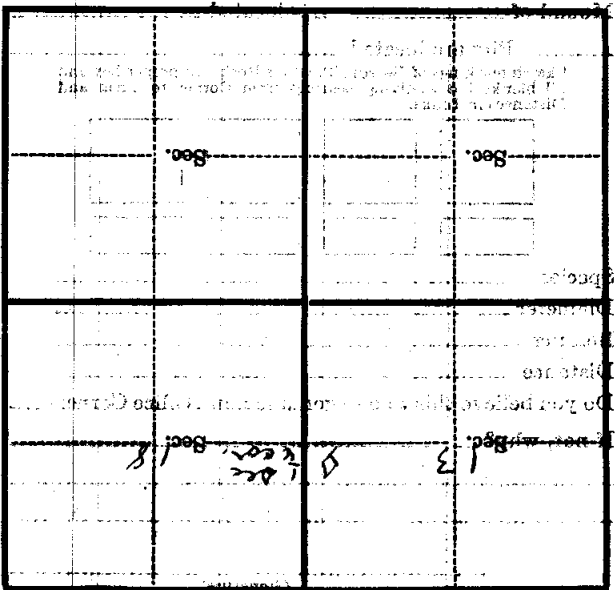
change distant

from which this Corner bears

side of

tree inches diameter, on the

Metal Location Poster is on a



(Make sketch of topography near Corner)

Mer.

R

T