

U. S. Department of Agriculture

FOREST SERVICE

Posted

Chippewa NATIONAL FOREST

J9

CORNERS OF THE PUBLIC SURVEY

T. *145N.* R. *31W* *5th* Mer.

Section Corner common to Sections

8, 9, 16, and 17

Corner consists of a *SPIKE* (~~not~~) in place

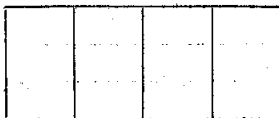
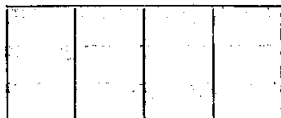
State condition

Dimensions above ground *Flush with Road* inches

Sketch grooves, letters, figures, or notches, on proper face or edge.

CARDINAL POSITION

DIAGONAL POSITION



Mound of is located

Pits are located

Sketch markings of Bearing Trees (or Rocks) in proper box and fill blanks below, giving bearings from Corner to Trees and Distances in Links.



Species *old Gov. BTs.* *J. Pine* *J. Pine* *MKD. New BTs.* *J. Pine* *J. Pine*

Diameter *10"* *10"* *6"* *7"*

Bearing *N49°W.* *S.75°W.* *N47°40'W.* *S.83°15'W.*

LN3 Distance *214* *236* *240* *205.9*

Do you believe this to be a genuine Land Office Corner? *Yes.*

If not, why?

J.A. Gjelhaug
(Signature)

Tech. Eng.
(Title)

12/13/34
(Date)

Corner again.

Give any further facts which will aid in finding this

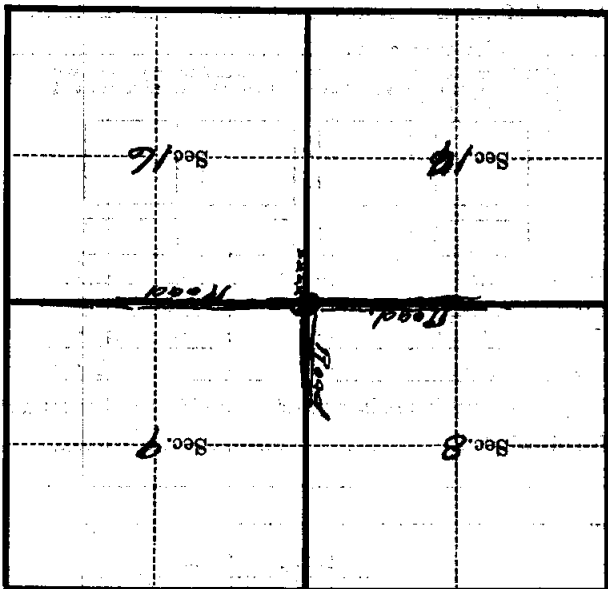
0.35% chains distant.

from which this Corner bears N. 13 1/4° W.

side of E Post.

tree 4" inches diameter, on the North

Metal Location Poster is on a Fence Post



(Make sketch of topography near Corner)

T. 195N R. 31W. 5th Mer.