

U. S. DEPARTMENT OF AGRICULTURE
FOREST SERVICE

Posted
E-19

Chippewa NATIONAL FOREST

CORNERS OF THE PUBLIC SURVEY

T. 145 N R. 27 W 5th Mer.

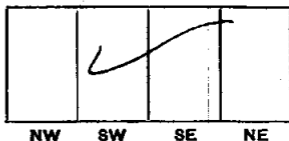
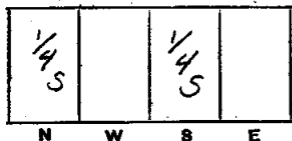
1/4 Corner common to Sections
2, and 11

Corner consists of a Squared Stake in place
State condition Fair

Dimensions above ground 2 1/2 x 1 x 3 6 inches.
Sketch grooves, letters, figures, or notches, on proper face or edge.

CARDINAL POSITION

DIAGONAL POSITION



Mound of ✓ is located ✓

✓ Pits are located ✓

Sketch markings of Bearing Trees (or Rocks) in proper box and fill blanks below, giving bearings from Corner to Trees and Distances in Links.

1/4	1/4 S		
B.T.	B.T.		

Species <u>Tam. stub</u>	<u>Tam. stub</u>		
Diameter <u>5"</u>	<u>4"</u>		
Bearing <u>N64°W</u>	<u>S95°W</u>		
Distance <u>70 Lks</u>	<u>35 Lks</u>		

Do you believe this to be a genuine Land Office Corner? Yes
If not, why? _____

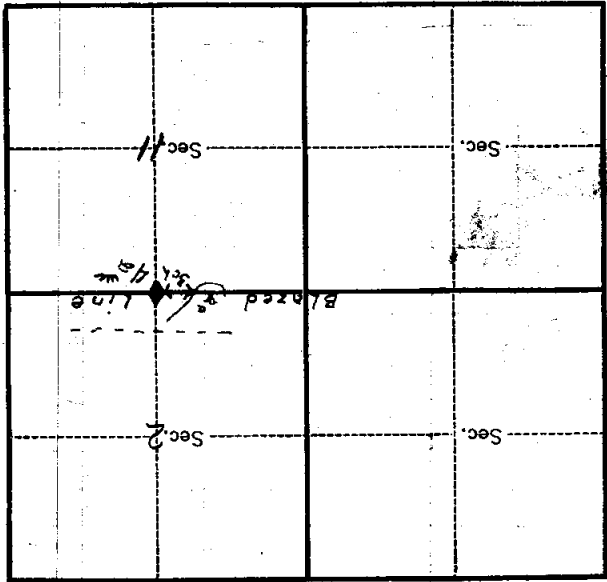
Edward J. Jensen

Signature.

10-25-29
Date.

Estimator
Title.

(Make sketch of topography near corner.)



Metal Location Poster is on a spruce

tree 4 inches diameter, on the south

side of section line

from which this corner bears S10°W

138 chains distant.

Give any further facts which will aid in finding this

corner again.

corner in the swamp. There is a

scribed T and S 37 links west of

correct corner but it does not agree

bearing & has or field notes.

U. S. DEPARTMENT OF AGRICULTURE
FOREST SERVICE

Posted
E-19

Chippewa NATIONAL FOREST

CORNERS OF THE PUBLIC SURVEY

T. 145 N. R. 27 W. S. 5 E. Mer.

N. 1/16 Corner common to Sections

....., 2, and 11

Corner consists of a Squared ~~scribed~~ Stake ~~(rod)~~ in place

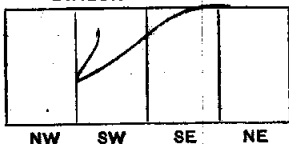
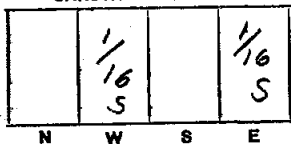
State condition Good

Dimensions above ground 2 X 1 X 4 8 inches.

Sketch grooves, letters, figures, or notches, on proper face or edge.

CARDINAL POSITION

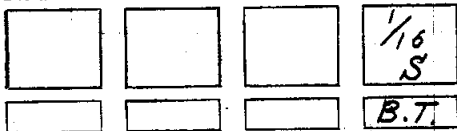
DIAGONAL POSITION



Mound of ✓ is located ✓

✓ Pits are located

Sketch markings of Bearing Trees (or Rocks) in proper box and fill blanks below, giving bearings from Corner to Trees and Distances in Links.



Species Tam. Stub

Diameter 6"

Bearing N 68° E

Distance 8 Lks.

Do you believe this to be a genuine Land Office Corner? yes

If not, why?

Edward Jensen

Signature.

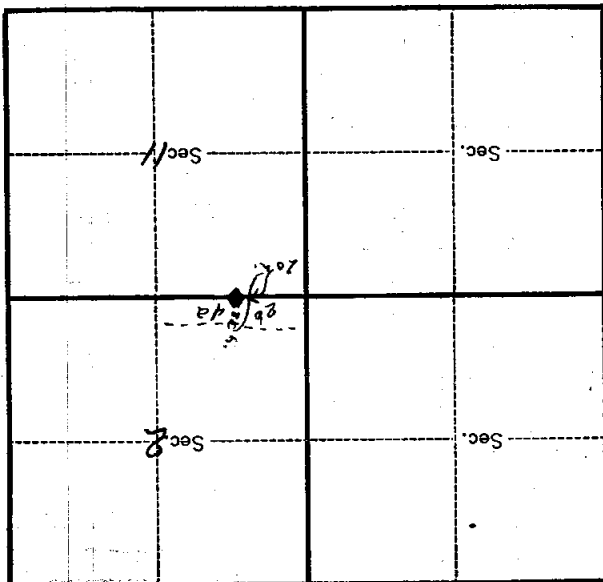
10-25-29

Date.

E. Jensen

Title.

(Make sketch of topography near Corner.)



Metal Location Poster is on a spruce

tree 3 inches diameter, on the south

side of section line

from which this Corner bears S 65° E

.06 chains distant.

Give any further facts which will aid in finding this

Corner again.

Corner is in a Tamar spruce swamp
20 ft East of a 26 1/2 ft stand. Old road
is 15 chains North of it.