

U. S. Department of Agriculture
FOREST SERVICE

A-15

Chippewa NATIONAL FOREST

CORNERS OF THE PUBLIC SURVEY

T. 145-46 N R. 27 W Mer. 07

4 Corner common to Sections 3, and 34

Corner consists of a 2" PIPE BRASS (not) in place

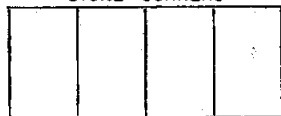
State condition New

Dimensions above ground 18 inches.

Sketch grooves, letters, figures, or notches, on proper face or edge.

STONE CORNERS

METAL CORNERS



N W S E

Mound of _____ is located _____

Pits are located _____

Sketch markings of Bearing Trees (or Rocks) in proper box and fill blanks below, giving bearings from Corner to Trees and Distances in Links.

145
R 27
S-3
197.7
BT

145
R 27
S-3
New
BT

146
R. 27
S-34
New
BT

145
R 27
S-3
New
BT

Species R. PINE R. PINE S. PINE R. PINE

Diameter 19" 13" 9" 11"

Bearing S 34 1/2 E S 5 W N 57 W S 58 W

Distance 22.7' 70.9' 10.3' 34.5'

Do you believe this to be a genuine Land Office Corner? Yes

If not, why? _____

Joseph L. Lausehe

(Signature)

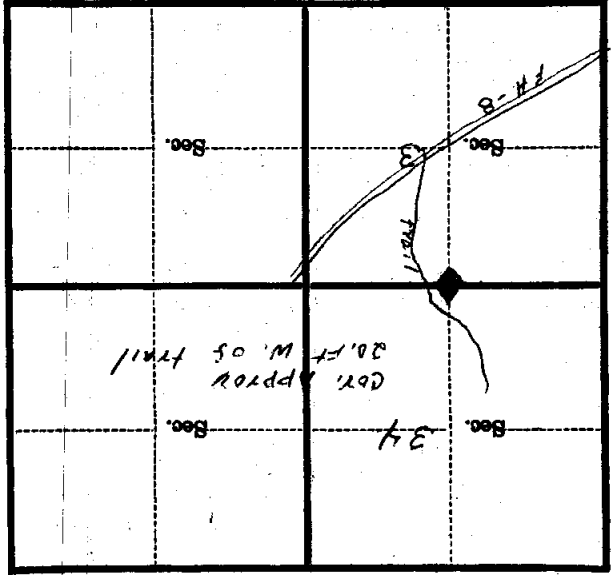
7-3-58

(Date)

Engl. Rd.

(Title)

A-15 Mer. T. 145-46 N. R. 27 W. 57
 (Make sketch of topography near Corner and show section line markers thus "X")



Metal Location Poster is on a R. Pine B.T.
 tree 19 inches diameter, on the NW
 side of Tree
 from which Chains
 this Corner bears N 41 W 277 ft
 (Bearing) (Distance)
 Section line marker between Secs. 33 and 34 is on
 a Tree, post, etc. on the 33
 (Name of road, trail, etc.)
 located chains E, W, N, S, from Sec. Cor.; 1/4 Cor.; Witness Cor.
 (Cross out nonapplicable)
 Give any further facts needed to find Corner again:
Trail is possible by
Car

U. S. DEPARTMENT OF AGRICULTURE
FOREST SERVICE

Poster
A-15

Chippewa NATIONAL FOREST

CORNERS OF THE PUBLIC SURVEY

T. *145 N* R. *27 W* *5th* Mer.

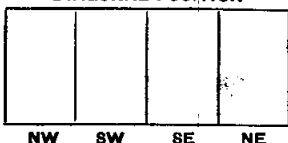
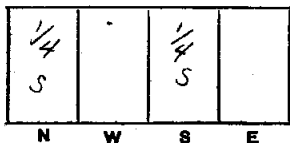
1/4 Corner common to Sections
....., *3* and *34*

Corner consists of a *Squared Scribed Stake* in place
State condition *Rotten Down*

Dimensions above ground inches.
Sketch grooves, letters, figures, or notches, on proper face or edge.

CARDINAL POSITION

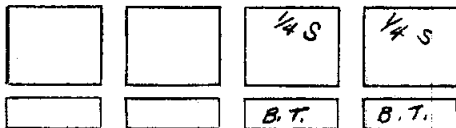
DIAGONAL POSITION



Mound of is located

Pits are located

Sketch markings of Bearing Trees (or Rocks) in proper box and fill blanks below, giving bearings from Corner to Trees and Distances in Links.



Species	<i>1</i>	<i>Har. Pine</i>	<i>Har. Pine</i>
Diameter		<i>15"</i>	<i>18"</i>
Bearing		<i>S 59° E</i>	<i>N 62° E</i>
Distance		<i>43</i>	<i>17</i>

Do you believe this to be a genuine Land Office Corner? *Yes*

If not, why?

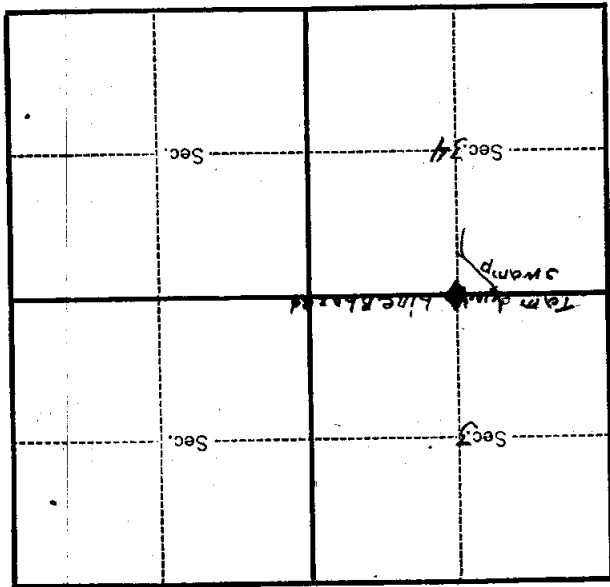
Edward Jensen
Signature.

10-23-29
Date.

Est. 107 0 101
Title.

T. 145 N. R. 27 W. S. 4 E. Mer.

8-3027 (Make sketch of topography near Corner.)



Metal Location Poster is on a Norway Pine tree 18 inches diameter, on the North side of Town Line. from which this Corner bears N 62° E chains distant. 07

Give any further facts which will aid in finding this Corner again.

Corner in Jack Pine pole stand

Form 874-9—Revised May, 1918
U. S. Department of Agriculture
FOREST SERVICE

*Copied
Posted
7/26.
A-15*

----- NATIONAL FOREST

CORNERS OF THE PUBLIC SURVEY

T. ~~145,146~~ R. ~~27~~ Mer. ~~5~~

$\frac{1}{4}$ Corner common to Sections
~~3~~, ~~34~~, and -----

Corner consists of a none (not) in place

State condition -----

Dimensions above ground ----- inches

Sketch grooves, letters, figures, or notches, on proper face or edge.

CARDINAL POSITION

DIAGONAL POSITION

--	--	--	--

N W S E

--	--	--	--

NW SW SE NE

Mound of ----- is located -----

----- Pits are located -----

Sketch markings of Bearing Trees (or Rocks) in proper box and fill blanks below, giving bearings from Corner to Trees and Distances in Links.

Species -----

Diameter -----

Bearing -----

Distance -----

Do you believe this to be a genuine Land Office Corner? -----

If not, why? -----

(Signature)

(Date)

(Title)

20" NORWAY on sec 34
16" NORWAY on sec 3

Corner again.

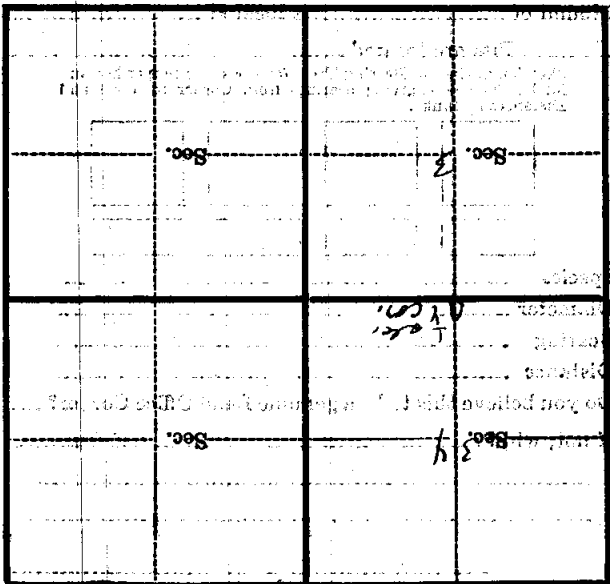
Give any further facts which will aid in finding this

from which this Corner bears

side of

tree inches diameter, on the

Metal Location Poster is on a



(Make sketch of topography near Corner)

U. S. Department of Agriculture
FOREST SERVICE

AS

Chippewa NATIONAL FOREST

CORNERS OF THE PUBLIC SURVEY

T 145-146 R. 27 S 2 Mer.

Corner common to Sections

13, and 34

Corner consists of a 2" PIPE BRASS CAP (lost) in place

State condition Good put in today

Dimensions above ground 18 inches

Sketch grooves, letters, figures, or notches, on proper face or edge.

CARDINAL POSITION

DIAGONAL POSITION

--	--	--	--

--	--	--	--

N W S E

NW SW SE NE

Mound of _____ is located _____

Pits are located _____

Sketch markings of Bearing Trees (or Rocks) in proper box and fill blanks below, giving bearings from Corner to Tree and Distances in Links.

R 145
R 27
S 3

R 145
R 27
S 3

R 146
S 3

R 145
R 27
S 3

BT

BT

BT

Species R. PINE R. PINE J. Blue R. PINE

Diameter 19" 13" 9" 11"

Bearing S 34 E S 50 W N 57 W S 58 W

Distance 277' 70.9' 103' 92.5'

Do you believe this to be a genuine Land Office Corner? Yes

If not, why? COR. box 1" line up

with blazes on orig. B.T.s

but distance is from orig.

Joseph F. Louch

(Signature)

notes

7-3-58

(Date)

Ingt. Aid

(Title)

Corner again.

Give any further facts which will aid in finding this

from which this Corner bears

side of

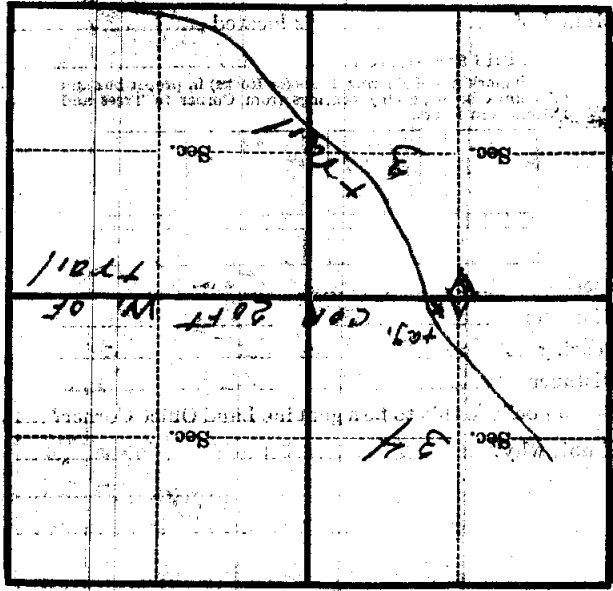
tree 19 inches diameter, on the

Metal Location Poster is on a

R. PINE BT. N.W.

27.7 FT

feet distant.



(Sketch sketch of topography near Corner)