

U. S. DEPARTMENT OF AGRICULTURE
FOREST SERVICE

CHIPPENAWA NATIONAL FOREST

Posted
E-13

CORNERS OF THE PUBLIC SURVEY

T. 145 N R. 27 W 5th Mer.

Section

Corner common to Sections

3, 4, 9, and 10

Corner consists of a squared stake ^{scribed} (not) in place

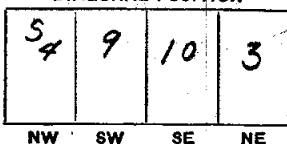
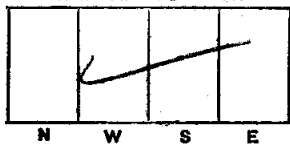
State condition Rotten down

Dimensions above ground 2x2 x 36 inches.

Sketch grooves, letters, figures, or notches, on proper face or edge.

CARDINAL POSITION

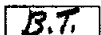
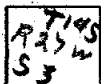
DIAGONAL POSITION



Mound of ✓ is located ✓

✓ Pits are located ✓

Sketch markings of Bearing Trees (or Rocks) in proper box and fill blanks below, giving bearings from Corner to Trees and Distances in Links.



Species J.P. Stue Downy log (rotted)

Diameter 11" 7 inch

Bearing N24°E N51°W

Distance 112.0 links 102 links

Do you believe this to be a genuine Land Office Corner? yes

If not, why? _____

Edward Messer
Signature.

Signature.

10-26-29.

Estimator

Date.

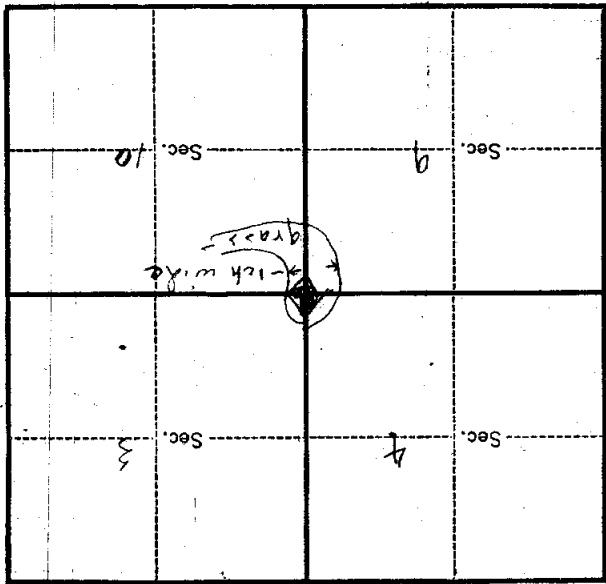
Title.

8-3027

T. 145 N. R. 27 W. S. Mer.

8-3027

(Make sketch of topography near corner.)



Metal Location Poster is on a Aspen
tree 11 inches diameter, on the North side of Stake
from which this Corner bears N 12 W
Chain distant.
Give any further facts which will aid in finding this
Corner again.

Old stake rather Set new stake in its place