

U. S. DEPARTMENT OF AGRICULTURE  
FOREST SERVICE

*posted*

NATIONAL FOREST **2-9**

CORNERS OF THE PUBLIC SURVEY

T. 145 N R. 26 W S Mer.  
Section Corner common to Sections  
32, \_\_\_\_\_, and 33

DESCRIPTION OF CORNER

Corner consists of a None Left

Dimension above ground \_\_\_\_\_ inches.

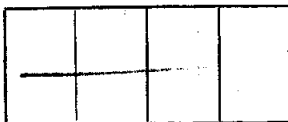
Sketch grooves, letters, figures, or notches, on proper face or edge.

CARDINAL POSITION



N W S E

DIAGONAL POSITION



NW SW SE NE

Mound of \_\_\_\_\_ is located \_\_\_\_\_

Pits are located \_\_\_\_\_

Sketch markings of Bearing Trees (or Rocks) in proper box and fill blanks below, giving bearings from Corner to Trees and Distances in Links.

			S 33
			BT

Species \_\_\_\_\_ *Norway Spruce*  
Diameter \_\_\_\_\_ *17 inches*  
Bearing \_\_\_\_\_ *NE*  
Distance \_\_\_\_\_

Do you believe this to be a genuine Land Office Corner? yes  
If not, why? \_\_\_\_\_

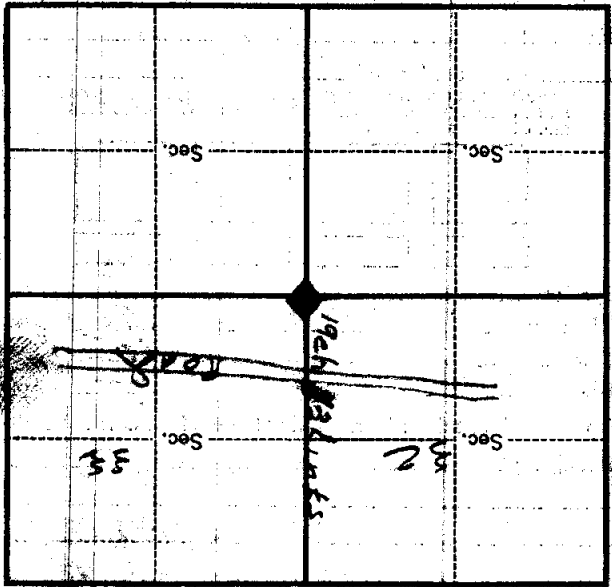
*H. E. Johnson*  
Signature  
*Collector*  
Title

8-28-29  
Date

T. 14 S. R. 26 W. S. Mer.

8-2027

(Make sketch of topography near Corner.)



Metal Location Poster is on a *rock*  
 tree *7* inches diameter, on the *NE*  
 side of *the*  
 from which this Corner bears *7*  
 chains distant.  
 Give any further facts which will aid in finding this  
 Corner again.