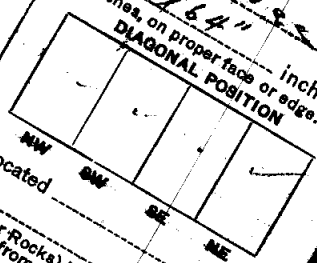
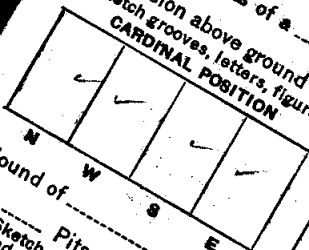
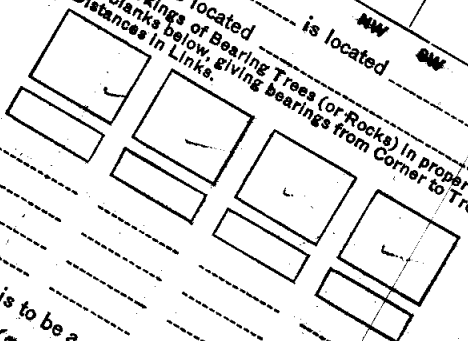


Chippewa NATIONAL FOREST  
 CORNERS OF THE PUBLIC LANDS  
 T. 145N R. 27W  
 Section 8 17  
 Corner common to 18

DESCRIPTION OF CORNER  
 Corner consists of a Square 2" x 2" x 64" inches.  
 Dimension above ground 2" x 2" x 64" inches.  
 Sketch grooves, letters, figures, or notches, on proper face or edge.

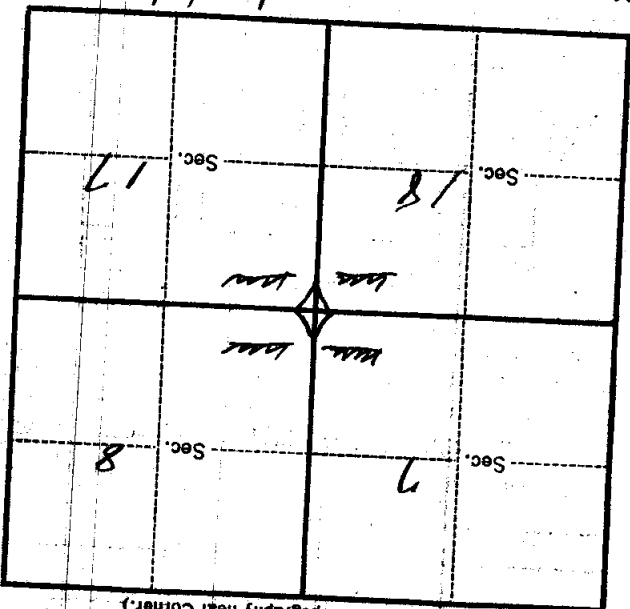


Mound of \_\_\_\_\_ is located \_\_\_\_\_  
 Pits are located \_\_\_\_\_  
 Sketch markings of Bearing Trees (or Rocks) in proper box  
 and fill blanks below, giving bearings from Corner to Trees  
 and Distances in Links.



This is to be a genuine Land Office Corner. No  
LINE INTEREST AT ALL  
are no B.T's and no  
stakes  
 Signature: Carl M. Handy  
 Title: Chief of Party

(Make sketch of topography near corner.)



Metal Location Poster is on a Larch tree

35 inches diameter, on the SW West

side of NW 5 E W corner (square stake)

from which this corner bears 5 73° W E

10 lbs. 12 chains distant.

Give any further facts which will aid in finding this

Corner again.

Trick / chain South

Car sets in larch swamp. There is a blazed trail from 1/4

cor. to sec. cor. tree blazed enough to follow.

T. 145N R. 27W S. Mer.