

U. S. DEPARTMENT OF AGRICULTURE
FOREST SERVICE

Posted
V-5

Chippewa NATIONAL FOREST

CORNERS OF THE PUBLIC SURVEY

T. 145 N R. 27 W 5th Mer.

section Corner common to Sections

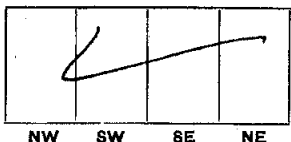
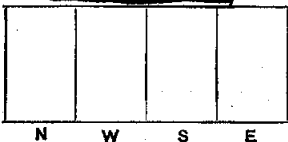
30, 29, 31, and 32

DESCRIPTION OF CORNER

Corner consists of a Squared Stake
in good condition - No scribing
Dimension above ground 4x4x24 inches.
Sketch grooves, letters, figures, or notches, on proper face or edge.

CARDINAL POSITION

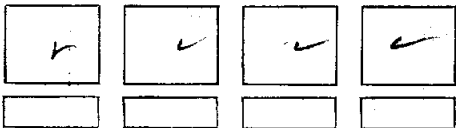
DIAGONAL POSITION



Mound of _____ is located _____

Pits are located _____

Sketch markings of Bearing Trees (or Rocks) in proper box and fill blanks below, giving bearings from Corner to Trees and Distances in Links.



Species _____
Diameter _____
Bearing _____
Distance _____

Do you believe this to be a genuine Land Office Corner? No

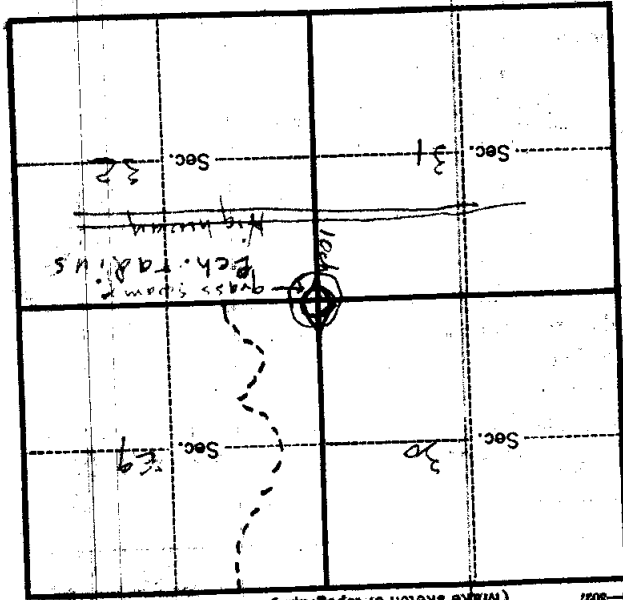
If not, why? Re-established stake
not scribed. Chains & field notes
this stake to be correct. No B.T's.

Edward Jensen C.M. Handy
Signature.

10-3-29 Date. Estimator Title.

T. 145 N. R. 27 W. S. 74 Mer.

9-3027 (Make sketch of topography near corner.)



Metal Location Poster is on a Norway Pine N.P.

tree 1 1/2 inches diameter, on the South NW

side of E W line a tree

from which this Corner bears

S 60 E

2 characters distant.

Give any further facts which will aid in finding this

Corner again.

Corner sets in small area

bearing 74.5 with a 40 ft. long

Cor. sets in middle of small

area down surrounded by pine ridge.

There is a location poster on Highway

#8 which is about Hahn St. at Cor.

Form 874-9—Revised May, 1918
U. S. Department of Agriculture
FOREST SERVICE

31

123

A-5

Chippewa NATIONAL FOREST

CORNERS OF THE PUBLIC SURVEY

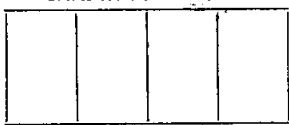
T. 145 N R. 27 W 5th Mer.

Section Corner common to Sections
29, 30, 31, and 32

Corner consists of a square stake (not) in place
State condition good condition no scribbling.

Dimensions above ground ~~4~~ 24 inches.

Sketch grooves, letters, figures, or notches, on proper face or edge.
CARDINAL POSITION DIAGONAL POSITION



N W S E

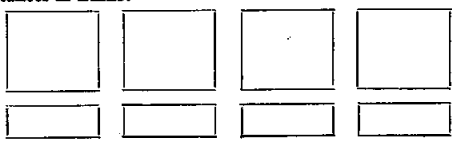


NW SW SE NE

Mound of _____ is located _____

Pits are located _____

Sketch markings of Bearing Trees (or Rocks) in proper box and fill blanks below, giving bearings from Corner to Trees and Distances in Links.



Species _____

Diameter _____

Bearing _____

Distance _____

Do you believe this to be a genuine Land Office Corner? No.

If not, why? There are no bearing trees and no iron stake

Earl M. Handy
(Signature)
Chief of Party.
(Title)

(Date)

Corner also made of small iron -
Corner arranged by James H. Hays
There is a lot of stump holes on the
No. 8. with a creek 4 ch. S. of
Corner.

Corner again.

Give any further facts which will aid in finding this

chains distant.

from which this Corner bears

2 Chains

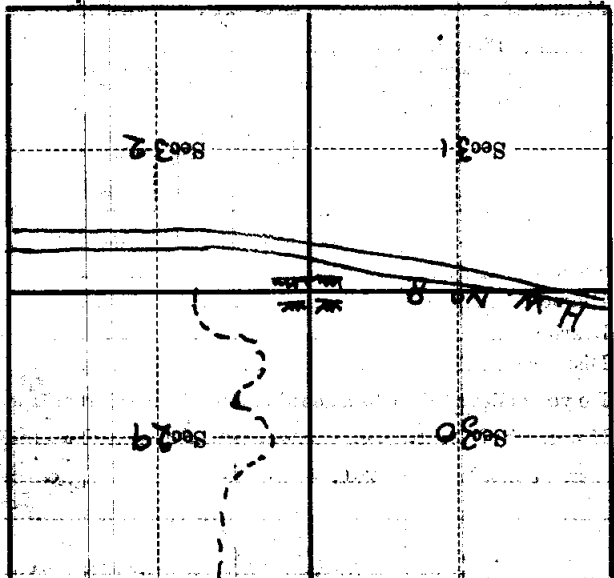
side of

tree

tree 10 inches diameter, on the N.W.

Metal Location Poster is on a

Norway Pine



(Make sketch of topography near Corner)