

U. S. Department of Agriculture

FOREST SERVICE

19

123

R-1

Chippewa NATIONAL FOREST

CORNERS OF THE PUBLIC SURVEY

T. 145 R. 27+28 5th P. Mer.

Section 19, 30⁽¹⁴⁵⁻²⁷⁾, 24, and 25⁽¹⁴⁵⁻²⁸⁾ Corner common to Sections

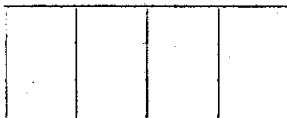
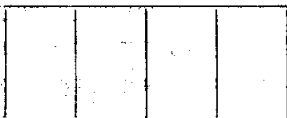
Corner consists of a Iron Pipe () in place State condition Good

Dimensions above ground 24 inches.

Sketch grooves, letters, figures, or notches, on proper face or edge.

CARDINAL POSITION

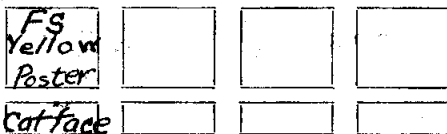
DIAGONAL POSITION



Mound of _____ is located _____

Pits are located _____

Sketch markings of Bearing Trees (or Rocks) in proper box and fill blanks below, giving bearings from Corner to Trees and Distances in Links.



Species Tamarack

Diameter 3 1/2"

Bearing NE

Distance 15'

Do you believe this to be a genuine Land Office Corner? Yes

If not, why? _____

Z. A. Zasada

(Signature)

Tech. Foreman

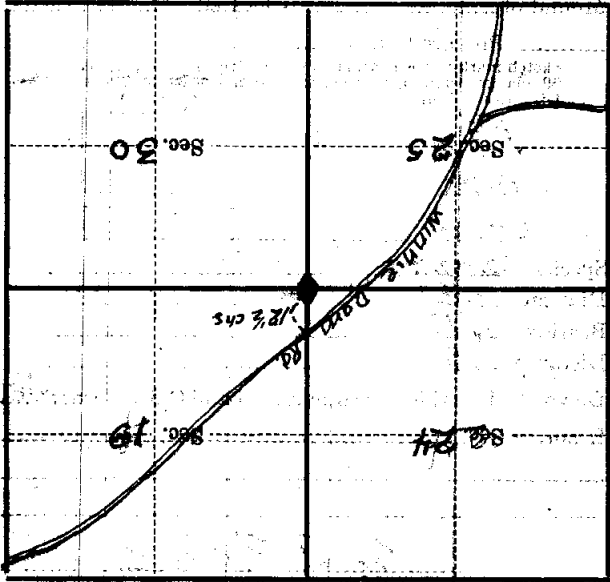
(Title)

12-7-33

(Date)

White Post on Winnie Dam
Road 12 1/2 chs N of corner
on section line between
sections 24 and 19.
Corner is in a Tamarack
swamp

Corner again.
Give any further facts which will aid in finding this
obscure distant
15'
from which this Corner bears
SW
side of
corner
tree 3 1/2 inches diameter, on the
NE
Metal Location Poster is on a
Tamarack



(Make sketch of topography near Corner)

T. 145 R. 27-28 5th P. Mer.

U. S. Department of Agriculture
FOREST SERVICE



Chippewa NATIONAL FOREST

CORNERS OF THE PUBLIC SURVEY

T. 145 R. 28 S. 27 Mer.

Section Corner common to Sections
24, 25, 19, and 30

Corner consists of a 2" Iron Pipe (not) in place
State condition Good

Dimensions above ground 24 inches

Sketch grooves, letters, figures, or notches, on proper face or edge.

CARDINAL POSITION

DIAGONAL POSITION

--	--	--	--

N W S E

--	--	--	--

NW SW SE NE

Mound of _____ is located _____

Pits are located _____

Sketch markings of Bearing Trees (or Rocks) in proper box and fill blanks below, giving bearings from Corner to Trees and Distances in Links.

T 145
R 28
S 24

T 145
R 28
S 25

T 145
R 27
S 30

T 145
R 27
S 19

B.T.

B.T.

B.T.

B.T.

Species Tam Tam Tam Tam

Diameter 7" 6" 6" 7"

Bearing N 31° W S 20° W S 82° E N 54° E

Distance 13.4' 8.9' 21.5' 18.7'

Do you believe this to be a genuine Land Office Corner? Yes

If not, why? _____

J. H. Lusk

(Signature)

3/10/58
(Date)

Progressive
(Title)

All Bearings Magnetic

Swamp

Cor. is set in Tamorack

Corner again.

Give any further facts which will aid in finding this

187' ~~more distant.~~

from which this Corner bears

S 54° W

side of

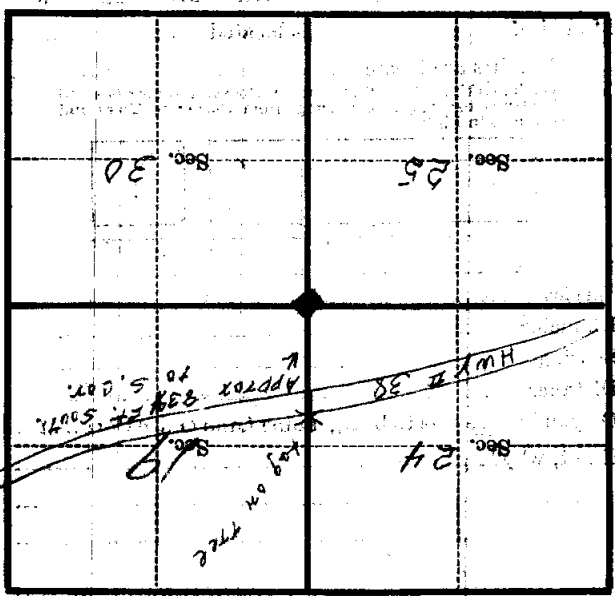
tree

tree 1/4 inches diameter, on the

WEST

Metal Location Poster is on a

T.M.



(Make sketch of topography near Corner)

T 145 R 28427 57 R-1 Mer.

Form 874-9—Revised May, 1918
 U. S. DEPARTMENT OF AGRICULTURE
 FOREST SERVICE

Posted R-2

Chippewa NATIONAL FOREST

CORNERS OF THE PUBLIC SURVEY

T. 145 N R. 27 W ~~28 W~~ 5th Mer.

Section Corner common to Sections

19, 30, 24, and 25

Corner consists of a 2" pipe (not) in place

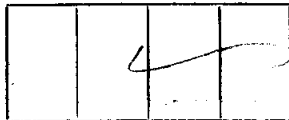
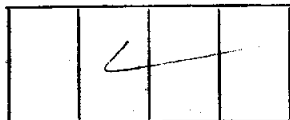
State condition Fine

Dimensions above ground 2" - 1 1/2" inches.

Sketch grooves, letters, figures, or notches, on proper face or edge.

CARDINAL POSITION

DIAGONAL POSITION



Mound of ✓ is located ✓

✓ Pits are located ✓

Sketch markings of Bearing Trees (or Rocks) in proper box and fill blanks below, giving bearings from Corner to Trees and Distances in Links.

	T 145 N	T 145 N	
B.T.	B.T.	B.T.	

Species Tam. Stub Tam. Stub Tam. Stub Dead snag

Diameter 20"

Bearing N 51° W N 30° E S 55° E N 5° W

Distance 27 lks 38 lks 18 lks 10 lks

Do you believe this to be a genuine Land Office Corner? yes

If not, why? yes

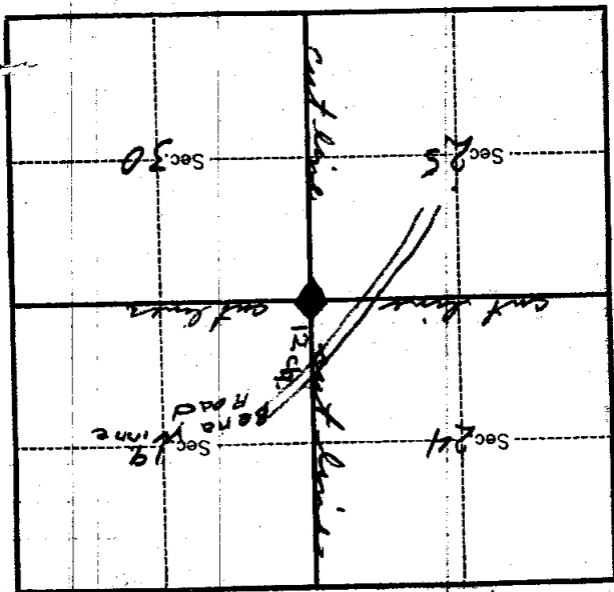
Edward Persson
 Signature.

10-14-29
 Date.

Estimator
 Title.

T 145 N. R. 27 W. 5 E Mer.

9-3027 (Make sketch of topography near corner.)



Metal Location Poster is on a Tamarack

tree 3 inches diameter, on the East

side of range line

from which this corner bears N. 50° E.

28 chains distant.

Give any further facts which will aid in finding this

Corner again.

Sets in Tamarack swamp

U. S. Department of Agriculture

FOREST SERVICE

CHIPPEWA NATIONAL FOREST

123
R-25

CORNERS OF THE PUBLIC SURVEY

T. 14b R. 26-27 5 Mer.

Section

Corner common to Sections

19 25 24 and 30

Corner consists of a (not) in place

State condition

Dimensions above ground inches.

Sketch grooves, letters, figures, or notches, on proper face or edge.

CARDINAL POSITION

DIAGONAL POSITION

N	W	S	E

NW	SW	SE	NE

Mound of is located

Pits are located

Sketch markings of Bearing Trees (or Rocks) in proper box and fill blanks below, giving bearings from Corner to Trees and Distances in Links.

Species Seed snag

Diameter 20"

Bearing N 5 W

Distance 10 links

Do you believe this to be a genuine Land Office Corner? Yes

If not, why?

(Signature)

(Date)

(Title)

Corner again.

Give any further facts which will aid in finding this

chains distant.

from which this Corner bears

side of

tree inches diameter, on the

Metal Location Poster is on a

	Sec.		Sec.
	Sec.		Sec.

(Make sketch of topography near Corner)

Mer.

R

T.